

## 2017 Presbyterian College Women's Soccer Match Notes

Contact: Nic Mills, Sports Information Assistant  
Email: mrmills@presby.edu  
Phone: O: 864-833-7096 C: 803-528-6926

 /BlueHoseSports  
 @BlueHoseSports/@PCWSoccer  
 BlueHoseSports  
 @BlueHoseSports/@BlueHoseWS  
 /Blue Hose Athletics

### 2017 Season

Overall:	2-2-0
Big South:	0-0-0
Home:	1-0-0
Away:	1-2-0
Neutral:	0-0-0

### 2017 Schedule & Results

#### AUGUST

24	at Furman	W, 2-0
27	<b>Wofford</b>	W, 3-2

#### SEPTEMBER

1	at College of Charleston	L, 0-3
3	at The Citadel	L, 2-3
8	at Alabama State	6:00 p.m.
12	<b>USC Upstate</b>	7:00 p.m.
15	<b>Mercer</b>	7:00 p.m.
23	<b>Campbell*</b>	1:00 p.m.
27	at Charleston Southern*	4:00 p.m.
30	<b>Longwood*</b>	1:00 p.m.

#### OCTOBER

4	at UNC Asheville*	7:00 p.m.
7	at Winthrop*	1:00 p.m.
11	<b>Liberty*</b>	4:00 p.m.
14	at Radford	7:00 p.m.
18	at Gardner-Webb*	7:00 p.m.
21	<b>High Point*</b>	7:00 p.m.
27	Big South Quarterfinals	TBA

#### NOVEMBER

3	Big South Semifinals	TBA
5	Big South Finals	TBA

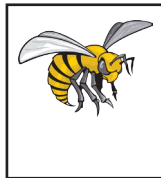
\* Big South Game

All Times listed are Eastern and subject to change  
Home games are listed in **Bold** and played at Edens  
Field at Martin Stadium.

### Week Three

#### Alabama State

- Fri. September 8 • 6:00 p.m. • Montgomery, Ala.
- Follow Live Stats [Here](#)



<b>Overall</b>	<b>1-4-0</b>
<b>CAA</b>	<b>0-0-0</b>
Home	1-1-0
Away	0-3-0
Neutral	0-0-0

### The Week Ahead

- The Blue Hose have a light week this week matches wise as they only play one match. Only playing once is needed as they are coming off a tough road trip to Charleston over the weekend.
- Alabama State is the opposition, they are 1-4 on the season with their win coming against Southeastern Louisiana.

### Series History

**Alabama State:** PC leads 2-0-0

The Blue Hose and Hornets have played twice back in 2013-2014 with PC winning both. PC defeated Alabama State 5-0 in 2013 and 5-1 in 2014.

**2017 BLUE HOSE WOMEN'S SOCCER ROSTER**

No.	Name	Cl.	Pos	Ht.	Hometown/Previous School
0	Anna Coleman	So.	GK	5-8	Dublin, Ga./West Laurens H.S.
00	Cadye Picklesimer	Sr.	GK	5-9	Grayson, Ga./Grayson H.S.
1	Alyssa Leaman	So.	GK	5-8	Penryn, Calif./Del Oro
2	Megan Archer	Jr.	F	5-4	Charlotte, N.C./Charlotte Catholic
4	Preston Robinette	Fr.	M	5-9	Maryville, Tenn./Maryville H.S.
5	Tara Brophy	Fr.	D	5-6	Wantagh, N.Y./General Douglas MacArthur H.S.
6	Isabelle Russell	Fr.	M	5-8	Greenville, S.C./Riverside H.S.
7	Sarah Yoss	Sr.	F	5-3	Peachtree City, Ga./Starr's Mill H.S.
8	Peyton Patterson	Fr.	M	5-9	Lancaster, S.C./Lancaster H.S.
10	Frances Whiteside	Sr.	M/F	5-5	Lancaster, S.C./Lancaster H.S.
11	Louise McGirt	Sr.	F	5-7	Decatur, Ga./Chamblee Charter H.S.
12	Mallory Hopkins	Jr.	M/F	5-6	Monroe, N.C./Sun Valley
13	Julia Hatcher	R-Fr.	F	5-3	Augusta, Ga./Augusta Prep
14	Jessica Powell	Fr.	M	5-10	Augusta, Ga./Augusta Prep
15	Emma Shaw	So.	D	5-5	Canton, Ga./Woodstock
16	Erin Moriarty	Jr.	F	5-4	Daniel Island, SC./Bishop England
17	Morgan Hutchison	Fr.	F	5-6	Athens, Tenn./McMinn County H.S.
19	Emma Gray	So.	M	5-6	Atlanta, Ga./Lakeside
21	Samantha Fink	So.	F	5-3	Waxhaw, N.C./Cuthbertson
24	Samantha Britt	Fr.	F	5-7	Greenville, S.C./Brashier Middle College
25	Kelsey Yeager	Jr.	D	5-7	Greenville, S.C./ Wade Hampton
26	Kristen Bane	Fr.	D	5-8	Columbia, S.C./Irmo H.S.
28	Abby Jones	So.	GK	5-6	Roswell, Ga./Roswell High School

**Head Coach:** Brian Purcell (255-222-23, 29th year)

**Assistant Coach:** Tanner Osborne (2nd Season) **Student Assistant:** Ashlynn Powell

**By Class**

**Seniors (4):** McGirt, Picklesimer, Whitesides, Yoss  
**Juniors (4):** Archer, Hopkins, Moriarty, Yeager  
**Sophomores (6):** Coleman, Fink, Gray, Jones, Leaman, Shaw  
**Freshmen (9):** Bane, Britt, Brophy, Hatcher, Hutchison, Patterson, Powell, Robinette, Russell

**By Position**

**Forward (8):** Archer, Britt, Fink, Hatcher, Hutchinson, McGirt, Moriarty, Yoss  
**Midfielder (6):** Gray, Hopkins, Powell, Robinette, Russell, Whitesides  
**Defender (4):** Bane, Brophy, Shaw, Yeager  
**Goalkeeper (4):** Coleman, Jones, Leaman, Picklesimer

**Head Coach Brian Purcell**



**Record At PC**

<b>Overall:</b>	<b>255-224-23</b>
Big South:	19-59-10
Big South Tournament:	0-1-0
South Atlantic Conf.:	81-29-6
SAC Tournament:	22-12-2

**Coaching Experience**

**1988-89:** Assistant Coach, PC (Men's Soccer Team)  
**1989-Present:** Head Coach, PC

**Coaching Highlights**

- 1994 NSCAA NCAA D-II National Coach of the Year.
- 7-Time SAC Coach of the Year.
- NSCAA/adidas Southeast Region Coach of the Year (1999).
- Won six SAC regular season championships and two SAC Tournament titles.
- Coached multiple All-Conference, All-Region, and All-District players, and eight All-Americans.

**Coach Purcell Year By Year**

Year	Affiliation	Overall	South Atlantic Conf.	Big South
1989	NAIA	5-11-0	-	-
1990	NAIA	11-5-1	3-1-0	-
1991	NAIA	6-9-1	3-3-0	-
1992	NCAA D-II	14-7-0	6-1-0	-
1993	NCAA D-II	13-5-0	5-2-0	-
1994	NCAA D-II	15-3-0 *	7-0-0	-
1995	NCAA D-II	15-5-0 *%	6-1-0	-
1996	NCAA D-II	15-3-1%	6-0-1	-
1997	NCAA D-II	13-6-1 *	6-1-0	-
1998	NCAA D-II	12-6-0	6-1-0	-
1999	NCAA D-II	15-2-1 *	7-0-1	-
2000	NCAA D-II	13-5-1	5-1-1	-
2001	NCAA D-II	11-5-1	5-2-0	-
2002	NCAA D-II	12-4-1	4-2-1	-
2003	NCAA D-II	14-6-0 *	5-2-0	-
2004	NCAA D-II	8-7-2	3-3-1	-
2005	NCAA D-II	6-9-1	1-5-1	-
2006	NCAA D-II	8-10-0	3-4-0	-
2007	NCAA D-I	6-7-1	-	-
2008	NCAA D-I	5-10-2	-	3-4-2
2009	NCAA D-I	3-12-2	-	0-7-2
2010	NCAA D-I	5-13-1	-	2-7-0
2011	NCAA D-I	4-13-2	-	2-6-2
2012	NCAA D-I	3-15-0	-	3-8-0
2013	NCAA D-I	9-9-0	-	6-5-0
2014	NCAA D-I	3-10-3	-	0-7-3
2015	NCAA D-I	6-11-1	-	2-7-1
2016	NCAA D-I	3-14-0	-	1-8-0
2017	NCAA D-I	2-2-0	-	0-0-0

\* Denotes appearance in NCAA Tournament  
 % Denotes SAC Tournament Champions

**Presbyterian College Quick Facts**

**School Information**

Name of School . . . . . Presbyterian College  
 Location . . . . . Clinton, S.C.  
 Founded . . . . . 1880  
 Enrollment . . . . . 1,100  
 Nickname . . . . . Blue Hose  
 School Colors . . . . . Garnet & Blue  
 Field . . . . . Edens Field at Martin Stadium  
 Capacity . . . . . 500  
 Affiliation . . . . . NCAA Division I  
 Conference . . . . . Big South  
 President . . . . . Robert Emmett Staton  
 Athletics Director . . . . . Danny Sterling  
 Senior Associate Athletic Director . . . . . Dee Nichols  
 Athletic Department Phone . . . . . 864-833-8240  
 Athletic Website . . . . . www.gobluehose.com

**Coaching Staff**

Head Coach . . . . . Brian Purcell (29th year)  
 Alma Mater . . . . . Presbyterian, 1987  
 Record at School . . . . . 255-224-23 (29th year)  
 Career Record (yrs.) . . . . . same  
 Assistant Coach . . . . . Tanner Osborne (Second year)

**Team Information**

2016 Overall record . . . . . 3-14-0  
 2016 Conference Record / Finish . . . . . 1-8-0 / 10th  
 2016 Final Ranking (NSCAA Poll) . . . . . N/A  
 Starters Returning / Lost . . . . . 7/4  
 Letterwinners Returning / Lost . . . . . 14/8

**History**

First year of soccer . . . . . 1989  
 Overall all-time record . . . . . 255-224-23  
 Number of years in NCAA Tournament . . . . . 5 (All NCAA D-II)  
 Record in NCAA Post-Season Play . . . . . 0-5-0  
 Last appearance . . . . . 2003  
 Last Opponent . . . . . Kennesaw State (D-II)  
 Result . . . . . Lost, 4-0 in First Round

**United Soccer Coaches Division I**

**Rankings**

*Week 3*

Rk	School	Prev.	W-L-T
1	UCLA	1	6-0-0
2	Stanford	5	4-1-0
3	West Virginia	6	3-1-0
4	Clemson	8	6-0-0
5	Penn State	4	3-1-0
6	North Carolina	9	4-1-0
7	South Carolina	11	5-1-0
8	Virginia	3	4-1-0
9	Florida	2	5-1-0
10	Texas A&M	12	3-0-1
11	Duke	13	5-1-0
12	Southern California	7	2-1-0
13	Florida State	15	4-1-0
14	Rutgers	16	5-0-0
15	Georgetown	10	4-2-0
16	Wisconsin	NR	5-1-0
17	Wake Forest	18	5-0-0
18	Oklahoma State	19	5-0-1
19	Kansas	NR	5-1-0
20	Central Florida	24	4-1-0
21	Utah	17	4-1-0
22	Nebraska	14	5-1-0
23	Southern Methodist	22	3-0-2
24	California	25	5-1-0
25	Colorado	21	3-0-2

**Also receiving votes:** Ohio State University (46), Virginia Tech (45), University Of Texas (34), Princeton University (34), University Of Memphis (28), Marquette (26), University of Mississippi (21), Brigham Young University (19), Pepperdine (18), University Of Alabama (16), University of Notre Dame (11), North Carolina State University (10), Washington State University (10), University Of Michigan (9), Baylor University (7), Yale University (4), University of Tennessee (4), University Of Cincinnati (3), Santa Clara University (2), University Of Wisconsin-Milwaukee (2), University Of Washington (1), University Of Minnesota (1), University of North Texas (1)

**2017 Big South Standings**

School	Conf.	Overall
RU	0-0-0	4-0-0
Longwd.	0-0-0	3-1-0
UNCash.	0-0-0	3-1-1
CU	0-0-0	3-2-0
<b>PC</b>	<b>0-0-0</b>	<b>2-2-0</b>
HPU	0-0-0	2-3-0
Win.	0-0-0	1-2-1
Lib.	0-0-0	1-3-2
CSU	0-0-0	2-4-0
GWU	0-0-0	0-5-0

**Previous Three Games vs.**

**Alabama State**

9/7/14

Ala. State at PC  
PC 5-1

**Goal:**

ALST- 43:10, Lewis  
PC- 65:45, Yoss  
PC- 67:52, Cobb  
PC- 73:38, Yoss  
PC- 76:41, Yoss  
PC- 79:18, Yoss

**Assist:**

Pienimaki  
O'Neil  
Smith  
Kozera

9/15/13

PC at Ala. State  
PC 5-0

**Goal:**

PC- 10:06, Kozera  
PC- 24:10, Whitson  
PC- 53:51, Lopez  
PC- 72:19, Simpson  
PC- 89:39, Boggus

**Assist:**

PK  
Simpson  
Patti

**Scouting the Competition**

**Alabama State:**



- Alabama State has started the 2017 season with a 1-4 record. They have lost to Mississippi, Jacksonville State, Troy and Samford while beating Southeastern Louisiana.
- Ariela Lewis leads the Hornets in scoring as she has scored two of their four goals in the first five matches.
- Gianna Guyot has scored played all 460:00 minutes in goal recording 45 saves while allowing 20 goals. That is good for nine saves per game average and a .692 save percentage.
- Alabama State is led by 11th year head coach Jodie Smith. They are coming off an 11-10-1 season in 2016.
- The Blue Hose and Hornets have played twice with PC winning both matches in 2013 and 2014.

### Youth Movement

- The Blue Hose welcome eight new freshmen to the team for the 2017 season.
- Of the nine freshman, four are midfielders, three forwards and two defensemen.
- In the Blue Hose first two games, five freshmen started game one and six started game two. Five of the seven goals have been scored by freshmen.

### Non-Conference Opponents

- The Blue Hose face seven non-conference opponents in 2017, five of those seven are in-state opposition.
- Five of PC's nine road games stay within the state borders.

### Bounce Back

- The Blue Hose will be looking to bounce back with a victory over Alabama State. PC lost at College of Charleston and The Citadel over the weekend. Alabama State, off to a 1-4 start may be the medicine the Blue Hose could use.

### Series Notes

- PC and Alabama State have met twice, in 2013 and 2014.
- The Blue Hose defeated the Hornets 5-0 and 5-1 in those two games. Senior Sarah Yoss scored four of her eight career goals in that 2014 match.

## Big South Players of the Week

### Week 1

**Attacking** - Courtney Naber, UNC Asheville

**Defense** - Allyson Giannone, Radford

**Freshman** - Gabi Paupst, Radford

### Week 2

**Attacking** - Courtney Nabor, UNC Asheville

**Defense**- Alyssa Leaman, PC

**Freshman**- Lexi Dean, Radford

### Week 3

**Attacking**- Jessica Wollman, Radford

**Defense**- Maria Kirby, Longwood

**Freshman**- Abby Major, Campbell



**BIG SOUTH**

**The Last Time it Happened**

**Individual**

4 goals in a game . . . . .	Sarah Yoss vs. Alabama State (9-7-14)
3 goals in a game . . . . .	Tori Lopez at VMI (10-19-13)
3 assists in a game . . . . .	Loring Washburn at Converse College (10-31-02)
2 assists in a game . . . . .	Kristen Peagler vs. Hampton (8-28-16)
7+ points in a game . . . . .	Sarah Yoss (8) vs. Alabama State (9-7-14)
6 points in a game . . . . .	Kristen Peagler (two goals, two assists) vs. Hampton (8-28-16)
5 points in a game . . . . .	Tori Lopez vs. VMI (9-29-12)
8+ shots by 1 player . . . . .	Keri O'Neill & Hannah Gaither (8) vs. S.C. State (9-19-14)
7 shots by 1 player . . . . .	Stephanie Aaron at Liberty (10-29-10)
6 shots by 1 player . . . . .	Ashlyn Powell & Kristen Peagler vs. Hampton (8-28-16)
Keeper had 15+ saves . . . . .	Sarah Beth Anderson (17) vs. Navy (8-22-10)
Keeper had 11+ saves . . . . .	Alyssa Leaman (13) vs. Radford (10-15-16)
Keeper had 10 saves. . . . .	Alyssa Leaman vs. College of Charleston (9-1-17)

**Team**

Won a Big South road game . . . . .	at Radford, W 2-1 (9-26-15)
Won a Big South home game. . . . .	vs. Charleston So., W 3-2 (10-12-16)
Won an NCAA Tourney game . . . . .	N/A
Hosted an NCAA Tourney game . . . . .	vs. Belmont Abbey (D-II), L 2-3 (11-14-99)
Scored 10+ goals in a game . . . . .	at Hampton (10), W 10-0 (9-20-15)
Scored 9 goals in a game . . . . .	vs. Wingate, W 9-0 (9-25-96)
Scored 8 goals in a game . . . . .	at Converse, W 8-0 (10-16-06)
Scored 7 goals in a game . . . . .	vs. Converse, W 7-0 (10-19-05)
Scored 6 goals in a game . . . . .	at Newberry, W 6-0 (9-9-03)
5+ assists in a game . . . . .	8 vs. Hampton W 10-0 (9-20-15)
4 assists in a game . . . . .	vs. Gardner-Webb, W 3-0 (10-20-12)
3 assists in a game . . . . .	vs Alabama State W 5-1 (9-7-14)
Took 35+ shots. . . . .	41 vs. Hampton W 5-0 (8-28-16)
Recorded a shutout. . . . .	at Furman, W 2-0 (8-24-17)
Was shutout . . . . .	at College of Charleston, L 0-3 (9-1-17)
Went to overtime . . . . .	vs. Winthrop, L 1-2 (2OT) (10-22-16)
Lost in overtime. . . . .	vs. Winthrop, L 1-2 (2OT) (10-22-16)
Won a game trailing at half . . . . .	vs. Alabama State, W 5-1 (9-7-14)
Lost a game leading at half . . . . .	at Jacksonville, L 2-3 (8-30-15)
Beat a ranked opponent . . . . .	vs. No. 12 Tusculum (D-II), W 1-0 (10-24-06)
Defeated Top-5 team . . . . .	N/A
Defeated Top-10 team . . . . .	vs. No. 7 North Florida (D-II), W 3-1 (9-7-03)
Was ranked. . . . .	No. 21 (NSCAA D-II) (10-29-03)
Highest ranking . . . . .	No. 1 (NSCAA D-II) (10-25-99)

**This Week in the Big South**

<u>Sep. 4</u>	
UNCG at High Pointt	7:00 p.m.
Longwood at Virginia Tech	7:00 p.m.
<u>Sep. 5</u>	
East Tennessee State at Radford	7:00 p.m.
<u>Sep. 7</u>	
UMBC at Liberty	6:00 p.m.
Winthrop at South Carolina State	7:00 p.m.
<u>Sep. 8</u>	
Radford at Mount St. Mary's	2:00 p.m.
Campbell at American	4:00 p.m.
Gardner-Webb at Eastern Kentucky	4:00 p.m.
<b>Presbyterian at Alabama State</b>	<b>6:00 p.m.</b>
Longwood at UNCG	7:00 p.m.
High Point at Auburn	7:30 p.m.
<u>Sep. 10</u>	
Delaware State at Charleston So.	1:00 p.m.
UNC Asheville at Kennesaw St.	1:00 p.m.
Longwood at UMBC	4:00 p.m.
Gardner-Webb at S.C. State	6:00 p.m.
USC Upstate at Winthrop	6:00 p.m.
High Point at Elon	7:00 p.m.
Liberty at LSU	7:00 p.m.

**2017 Blue Hose Soccer Record When...**

Playing at home . . . . .	.1-0-0
Playing on the road . . . . .	.1-2-0
Playing at a neutral site . . . . .	.0-0-0
Playing a Big South road game . . . . .	.0-0-0
Playing a Big South home game . . . . .	.0-0-0
Playing at night . . . . .	.2-1-0
Playing during the day . . . . .	.0-1-0
Playing outside South Carolina. . . . .	.0-0-0
Playing a team from North Carolina . . . . .	.0-0-0
Playing a team from South Carolina . . . . .	.2-2-0
Playing a team from Virginia. . . . .	.0-0-0
Playing in August. . . . .	.2-0-0
Playing in September. . . . .	.0-2-0
Playing in October . . . . .	.0-0-0
Playing in November . . . . .	.0-0-0
Scoring First. . . . .	.2-0-0
Opponents score first . . . . .	.0-2-0
Scoring last. . . . .	.1-1-0
Opponents score last . . . . .	.1-1-0
Scoring no goals. . . . .	.0-1-0
Scoring 1 goal . . . . .	.0-0-0
Scoring 2 goals. . . . .	.1-1-0
Scoring 3+ goals . . . . .	.1-0-0
Shuts out opponent. . . . .	.1-0-0
Allows 1 goal. . . . .	.0-0-0
Allows 2 goals . . . . .	.1-0-0
Allows 3+ goals. . . . .	.0-2-0
In overtime. . . . .	.0-0-0
In a one goal game . . . . .	.1-1-0
Leading at halftime . . . . .	.2-0-0
Trailing at halftime. . . . .	.0-2-0
Tied at halftime . . . . .	.0-0-0
Outshooting opponent . . . . .	.0-0-0
Being outshot. . . . .	.2-2-0
Same number of shots . . . . .	.0-0-0

2017 Statistics

The Automated ScoreBook  
 Presbyterian College Combined Team Statistics (as of Sep 03, 2017)  
 All games

RECORD:	OVERALL	HOME	AWAY	NEUTRAL
ALL GAMES	2-2	1-0	1-2	0-0
CONFERENCE	0-0	0-0	0-0	0-0
NON-CONFERENCE	2-2	1-0	1-2	0-0

Date	Opponent	Score	Att.
Aug 24	at Furman	w 2-0	402
Aug 27	WOFFORD	w 3-2	157
Sep 01	at Col. of Charleston	L 0-3	307
Sep 03	at The Citadel	L 2-3	243

TEAM STATISTICS	PC	OPP
<b>SHOT STATISTICS</b>		
Goals-Shot attempts	7-31	8-73
Goals scored per game	1.75	2.00
Shot pct.	.226	.110
Shots on goal-Attempts	17-31	37-73
SOG pct.	.548	.507
Shots/Game	7.8	18.2
CORNER KICKS	8	32
PENALTY KICKS	0-0	0-0
<b>PENALTIES</b>		
Yellow cards	2	6
Red cards	0	0
<b>ATTENDANCE</b>		
Total	157	952
Dates/Avg Per Date	1/157	3/317
Neutral Site #/Avg	0/0	

#	Player	gp	g	a	pts	sh	sh%	sog	sog%	qw	pk-att
10	WHITESIDES, Frances	4	1	1	3	5	.200	3	.600	1	0-0
25	YEAGER, Kelsey	4	1	1	3	2	.500	1	.500	0	0-0
14	POWELL, Jessica	4	1	0	2	5	.200	2	.400	1	0-0
24	BRITT, Samantha	4	1	0	2	2	.500	2	1.000	0	0-0
8	PATTERSON, Peyton	2	1	0	2	2	.500	2	1.000	0	0-0
4	ROBINETTE, Preston	4	1	0	2	2	.500	1	.500	0	0-0
26	BANE, Kristen	4	1	0	2	1	1.000	1	1.000	0	0-0
19	GRAY, Emma	3	0	1	1	0	.000	0	.000	0	0-0
5	BROPHY, Tara	4	0	0	0	3	.000	1	.333	0	0-0
2	ARCHER, Megan	4	0	0	0	3	.000	2	.667	0	0-0
21	FINK, Samantha	4	0	0	0	1	.000	1	1.000	0	0-0
17	HUTCHISON, Morgan	4	0	0	0	1	.000	0	.000	0	0-0
12	HOPKINS, Mallory	2	0	0	0	1	.000	1	1.000	0	0-0
11	MCGIRT, Louise	4	0	0	0	1	.000	0	.000	0	0-0
7	YOSS, Sarah	4	0	0	0	1	.000	0	.000	0	0-0
6	RUSSELL, Isabelle	4	0	0	0	1	.000	0	.000	0	0-0
28	JONES, Abby	1	0	0	0	0	.000	0	.000	0	0-0
16	MORIARTY, Erin	3	0	0	0	0	.000	0	.000	0	0-0
15	SHAW, Emma	4	0	0	0	0	.000	0	.000	0	0-0
1	LEAMAN, Alyssa	4	0	0	0	0	.000	0	.000	0	0-0
Total		4	7	3	17	31	.226	17	.548	2	0-0
Opponents		4	8	3	19	73	.110	37	.507	2	0-0

#	Goalie	GP	Min	GA	GAAvg	Saves	Pct	W-L-T	Sho
1	LEAMAN, Alyssa	4	339:27	7	1.86	27	.794	2-2-0	1/0
28	JONES, Abby	1	20:33	1	4.38	0	.000	0-0-0	0/0
Total		4	360:00	8	2.00	29	.784	2-2-0	1
Opponents		4	360:00	7	1.75	10	.588	2-2-0	1

Goals by Period	1st	2nd	Total
Presbyterian College	3	4	7
Opponents	2	6	8

Shots by Period	1st	2nd	Total
Presbyterian College	15	16	31
Opponents	39	34	73

Saves by Period	1st	2nd	Total
Presbyterian College	16	13	29
Opponents	4	6	10

Corners by Period	1st	2nd	Total
Presbyterian College	3	5	8
Opponents	23	9	32

Fouls by Period	1st	2nd	Total
Presbyterian College	14	23	37
Opponents	16	19	35