



# SAINT JOSEPH'S BASKETBALL

## 2017-18 GAME NOTES

**Game**  
**8**

**SAINT JOSEPH'S HAWKS (4-3; 0-0 Big 5)**

**vs.**

**#4 VILLANOVA WILDCATS (7-0; 1-0 Big 5)**

*December 2, 2017 • 5:30 p.m.*

*Michael J. Hagan '85 Arena (4,200) • Philadelphia, Pa.*

| 2017-18 SCHEDULE/RESULTS |                                       |                      |
|--------------------------|---------------------------------------|----------------------|
| Overall: 4-3             | A-10: 0-0                             | H: 2-0 A: 1-1 N: 1-2 |
| <b>NOVEMBER</b>          |                                       |                      |
| Sat., 11                 | at Toledo (ESPN3)                     | L 87-98              |
| Mon., 13                 | at UIC (NBCSP+)                       | W 86-82 ot           |
| Sat., 18                 | PRINCETON                             | W 71-58              |
| Thu., 23                 | vs. Washington St. + (ESPN3)          | L 71-75              |
| Fri., 24                 | vs. Harvard + (ESPN3)                 | L 71-77              |
| Sun., 26                 | vs. Sacramento St. + (ESPN3)          | W 74-69              |
| Wed., 29                 | BUCKNELL                              | W 83-70              |
| <b>DECEMBER</b>          |                                       |                      |
| Sat., 2                  | #4 VILLANOVA & (ESPN2)                | 5:30 p.m.            |
| Sat., 9                  | at Temple & (CBSSN)                   | 2:30 p.m.            |
| Sun., 17                 | MAINE                                 | 4:30 p.m.            |
| Wed., 20                 | vs. St. John's % (ESPN3)              | 4:30 p.m.            |
| Sat., 30                 | at George Washington                  | 4:00 p.m.            |
| <b>JANUARY</b>           |                                       |                      |
| Wed., 3                  | VCU                                   | 7:00 p.m.            |
| Sat., 6                  | ST. BONAVENTURE (ESPN3)               | 8:00 p.m.            |
| Wed., 10                 | at George Mason                       | 7:00 p.m.            |
| Sun., 14                 | at Massachusetts (NBCSN)              | 5:00 p.m.            |
| Wed., 17                 | DAYTON (CBSSN)                        | 6:30 p.m.            |
| Sat., 20                 | FORDHAM                               | 1:00 p.m.            |
| Wed., 24                 | at St. Bonaventure (CBSSN)            | 7:00 p.m.            |
| Sat., 27                 | at Penn (Palestra) & (NBCSP)          | 7:00 p.m.            |
| Wed., 31                 | SAINT LOUIS                           | 7:00 p.m.            |
| <b>FEBRUARY</b>          |                                       |                      |
| Sat., 3                  | at La Salle (CBSSN)                   | 4:00 p.m.            |
| Tue., 6                  | at Davidson (Stadium)                 | 7:00 p.m.            |
| Sat., 10                 | MASSACHUSETTS                         | 4:00 p.m.            |
| Wed., 14                 | at Fordham                            | 7:00 p.m.            |
| Sat., 17                 | DUQUESNE                              | 6:00 p.m.            |
| Wed., 21                 | GEORGE MASON                          | 7:00 p.m.            |
| Sat., 24                 | at Richmond (NBCSP+, NBCSW+)          | 6:00 p.m.            |
| Tue., 27                 | at Rhode Island (CBSSN)               | 7:00 p.m.            |
| <b>MARCH</b>             |                                       |                      |
| Sat., 3                  | LA SALLE & (Facebook)                 | 2:00 p.m.            |
| Wed., 7-                 | Atlantic 10 Championship              |                      |
| Sun., 11                 | (Capital One Arena, Washington, D.C.) |                      |

Home games in CAPS at Hagan Arena  
+ Wooden Legacy (Fullerton, Calif.)  
% Basketball Hall of Fame Holiday Showcase (Uncasville, Conn.)  
& Big 5 game

**Men's Basketball Contact:**  
**Marie Wozniak (mwozniak@sju.edu)**  
**O: 610-660-1727 C: 610-999-3634**

**FOLLOW THE HAWKS**

**Twitter** @SJUHawks\_MBB, @SJUHawks  
**Instagram** @SJUHawks\_MBB  
**Facebook** saintjosephshawks

**Video:** ESPN2 (Bob Wischusen, Fran Fraschilla)  
**Radio:** 1210 WPHT (Matt Martucci, Joe Lunardi)

**Online:** ESPN.com  
**Online:** SJUHawks.com

**ABOUT THE HAWKS**

- Saint Joseph's won its second game in a row by defeating Bucknell, 83-70, at Hagan Arena
- Senior guard **Shavar Newkirk** had his first career double-double with 19 points and 10 rebounds
- Freshman **Taylor Funk** tops the Atlantic 10 in three-point field goals made per game with 3.5, and ranks 39th in the nation for three-pointers made (22)
- SJU leads the A-10 and ranks third in the nation in fewest turnovers per game (8.7)
- After playing five of its first six games away from home, SJU is in the midst of four consecutive games in Philadelphia

**INJURY REPORT**

- **Charlie Brown, Jr.**, remains sidelined with a fracture in his left wrist, on which he had surgery on Oct. 24; he will miss tonight's game
- **Lamarr Kimble** will miss the remainder of the season after re-injuring the fifth metatarsal of his left foot at Toledo. It was the same injury that occurred on Feb. 11, 2017 which required surgery and caused him to miss the final seven games of the season

**NEXT UP**

- Dec. 9 at Temple, 2:30 p.m., CBS Sports Network
- Dec. 17 vs. Maine, 4:30 p.m., A-10 Network

| HAWKS' LINEUP              |       |     |     |      |                                                 |
|----------------------------|-------|-----|-----|------|-------------------------------------------------|
| 2017-18 Stats              |       |     |     |      |                                                 |
| PROBABLE STARTERS          | PPG   | RPG | APG | MPG  | Notes                                           |
| F- #25 James Demery        | 17.1  | 5.1 | 0.8 | 34.9 | Team-high 20 pts in Bucknell win                |
| F- #24 Pierfrancesco Oliva | 7.4   | 7.4 | 3.1 | 30.1 | Has posted 10 rebounds twice this year          |
| F- #12 Anthony Longpré     | 5.1   | 3.3 | 1.4 | 20.4 | First double-figure game w/ 10 vs. Princeton    |
| G- #15 Chris Clover        | 6.3   | 2.7 | 0.7 | 23.0 | Season-high 17 pts vs. Bucknell                 |
| G- #1 Shavar Newkirk       | 17.4  | 3.6 | 3.3 | 29.3 | First career double-double vs. Bucknell         |
| OFF THE BENCH              |       |     |     |      |                                                 |
| F- #12 Taylor Funk         | 14.9  | 5.3 | 1.9 | 25.1 | Had 15 second-half pts vs. Sacramento St.       |
| G- #5 Nick Robinson        | 4.3   | 3.7 | 2.4 | 24.7 | Scored 7 pts in homecoming at UIC               |
| F- #22 Lorenzo Edwards     | 3.7   | 4.5 | 0.2 | 11.0 | Career-highs of 10 pts, 9 rebs vs. SSU          |
| F- #32 Jai Williams        | 0.8   | 0.3 | 0.0 | 3.5  | Has seen action in 4 games                      |
| F- #23 Markell Lodge       | 0.0   | 0.0 | 0.0 | 0.0  | Only player to start all 31 games last year     |
| F- #10 Gerald Blount       | --    | --  | --  | --   | Saw action in 9 games in 2016-17                |
| G- #3 Mike Booth           | 0.0   | 0.0 | 0.0 | 0.0  | Fourth-year walk-on                             |
| G- #21 Kyle Thompson       | 0.0   | 0.0 | 0.0 | 0.0  | Fourth-year walk-on                             |
| G- #13 Christian Vega      | --    | --  | --  | --   | Third-year walk-on                              |
| G- #11 Toliver Freeman     | --    | --  | --  | --   | In second year as a walk-on                     |
| INJURED                    |       |     |     |      |                                                 |
| F- #2 Charlie Brown, Jr.   | 12.8* | 5.0 | 1.1 | 34.2 | Still sidelined with wrist injury               |
| G- #0 Lamarr Kimble        | 10.0  | 1.0 | 2.0 | 30.0 | Out for the season w/ recurrence of foot injury |
| * 2016-17 stats            |       |     |     |      |                                                 |

**ROSTER**

| NO. | NAME                | CL    | POS | HT   | WT  | HOMETOWN             | HIGH SCHOOL                     |
|-----|---------------------|-------|-----|------|-----|----------------------|---------------------------------|
| 0   | Lamarr Kimble #     | Jr.   | G   | 6-0  | 185 | Philadelphia, Pa.    | Neumann-Goretti                 |
| 1   | Shavar Newkirk      | Sr.   | G   | 6-0  | 185 | New York, N.Y.       | Cardinal Hayes                  |
| 2   | Charlie Brown       | So.   | F   | 6-7  | 192 | Philadelphia, Pa.    | St. Thomas More (Conn.)         |
| 3   | Michael Booth       | Sr.   | G   | 6-3  | 205 | Thornton, Pa.        | Bishop Shanahan                 |
| 5   | Nick Robinson       | So.   | F   | 6-6  | 195 | Chicago, Ill.        | Kenwood Academy                 |
| 10  | Gerald Blount       | So.   | F   | 6-6  | 225 | Suwanee, Ga.         | Pomfret School (Conn.)          |
| 11  | Toliver Freeman     | So.   | G   | 6-3  | 212 | Baton Rouge, La.     | Catholic                        |
| 12  | Anthony Longpré     | Fr.   | F   | 6-10 | 240 | L'Assomption, Quebec | Glenelg Country (Md.)           |
| 13  | Christian Vega      | Sr.   | G   | 6-0  | 188 | Guaynabo, P.R.       | Colegio San José                |
| 15  | Chris Clover        | Jr.   | G   | 6-3  | 210 | Philadelphia, Pa.    | St. Joseph's Prep               |
| 21  | Kyle Thompson       | Sr.   | G   | 6-2  | 200 | Mt. Laurel, N.J.     | St. Joseph's Prep               |
| 22  | Lorenzo Edwards     | R-Fr. | F   | 6-7  | 220 | Lake Forest, Ill.    | Lake Forest                     |
| 23  | Markell Lodge       | Jr.   | F   | 6-7  | 215 | Washington, N.C.     | Pace Academy                    |
| 24  | Pierfrancesco Oliva | R-So. | F   | 6-8  | 210 | Taranto, Italy       | Bergen Catholic (N.J.)          |
| 25  | James Demery        | Sr.   | F   | 6-6  | 200 | Williamston, N.C.    | Northside Christian Academy     |
| 32  | Jai Williams        | Sr.   | F   | 6-9  | 235 | Philadelphia, Pa.    | Phila. Electrical Tech. Charter |
| 33  | Taylor Funk         | Fr.   | F   | 6-9  | 225 | Lancaster, Pa.       | Manheim Central                 |

# Out for season with injury

**Head Coach:** Phil Martelli (Widener '76) - 23rd year

**Assistant Coaches:** Mark Bass (Saint Joseph's '95) - 19th year; David Duda (Spring Garden '88) - 12th year; Geoff Arnold (Saint Joseph's '86) - 10th year

**Director of Program Administration:** Phil Martelli, Jr. (Saint Joseph's '03)

**Athletic Trainer:** Bill Lukasiewicz (Springfield '88)

**PRONUNCIATION GUIDE**

|                     |                                         |
|---------------------|-----------------------------------------|
| (Gerald) Blount     | .....BLUNT                              |
| (Chris) Clover      | .....CLOE-verr                          |
| (Anthony) Longpré   | .....long-PRAY                          |
| Markell (Lodge)     | .....mar-KELL                           |
| Shavar (Newkirk)    | .....shuh-VAR                           |
| Pierfrancesco Oliva | .....pea-AIR-fran-CHESS-co<br>o-LEE-vuh |
| Jai (Williams)      | .....Ji (rhymes with "eye")             |
| Lukasiewicz         | .....loo-KAZ-uh-WITZ                    |



**Champions - 1986, 1997, 2014, 2016**

**QUICK FACTS**

Location .....Philadelphia, Pa. 19131  
 Founded .....1851  
 Enrollment.....4,850 (full-time undergrads)  
 Denomination .....Roman Catholic (Jesuit)  
 Nickname .....Hawks  
 Colors .....Crimson and Gray  
 Athletic Affiliation .....NCAA Division I  
 Conference .....Atlantic 10  
 Home Arena .....Michael J. Hagan '85 Arena  
 Capacity .....4,200  
 President .....Mark C. Reed, Ed.D.  
 Vice President for Athletics/Athletic Director.....Don DiJulia

2016-17 Record .....11-20  
 2016-17 A-10 Record (Place) .....4-14 (13th)  
 Letterwinners Returning/Lost.....15/2  
 Starters Returning/Lost.....5/0

Head Coach (alma mater) .....Phil Martelli (Widener '76)  
 Coach's Overall Record/Year .....418-296, 23rd season  
 Record at School/Year ..... same  
 Assistant Coaches .....Mark Bass (Saint Joseph's '96) - 19th season  
 .....David Duda (Spring Garden '88) - 12th season  
 .....Geoff Arnold (Saint Joseph's '86) - 10th season  
 Director of Program Administration .....Phil Martelli, Jr. - 1st season

Assoc. AD/Communications (MBB Contact) .....Marie Wozniak  
 Office Phone.....610-660-1727  
 Cell Phone .....610-999-3634  
 Athletic Communications Fax.....610-660-1724  
 Email .....mwozniak@sju.edu

Basketball Office .....610-660-1706  
 Basketball Fax.....610-660-1762  
 Press Row - Hagan Arena .....610-660-2599  
 Athletics Website .....www.sjuhawks.com

**BROADCAST SCHEDULE**

| Date         | Opponent                 | EST              | TV             | Radio       | Digital         |
|--------------|--------------------------|------------------|----------------|-------------|-----------------|
| 11/11        | at Toledo                | 7:00 p.m.        |                | 1210        | ESPN3           |
| 11/13        | at Illinois at Chicago   | 8:00 p.m.        | NBCSP+,NBCSCHI | 1210        |                 |
| <b>11/18</b> | <b>PRINCETON</b>         | <b>7:00 p.m.</b> |                | <b>1210</b> | <b>A10N</b>     |
| 11/23        | vs. Washington State     | 6:00 p.m.        |                | 1210        | ESPN3           |
| 11/24        | vs. Harvard              | 3:30 p.m.        |                | 1210        | ESPN3           |
| 11/26        | vs. Sacramento State     | 2:30 p.m.        |                | 1210        | ESPN3           |
| <b>11/29</b> | <b>BUCKNELL</b>          | <b>7:00 p.m.</b> |                | <b>1210</b> | <b>A10N</b>     |
| <b>12/2</b>  | <b>VILLANOVA</b>         | <b>5:30 p.m.</b> | <b>ESPN2</b>   | <b>1210</b> |                 |
| 12/9         | at Temple                | 2:30 p.m.        | CBSSN          | TBA         |                 |
| <b>12/17</b> | <b>MAINE</b>             | <b>4:30 p.m.</b> |                | <b>1210</b> | <b>A10N</b>     |
| 12/20        | vs. St. John's           | 4:30 p.m.        | ESPNU          | 1210        |                 |
| 12/30        | at George Washington     | 4:00 p.m.        |                | TBA         | A10N            |
| <b>1/3</b>   | <b>VCU</b>               | <b>7:00 p.m.</b> |                | <b>1210</b> | A10N            |
| <b>1/6</b>   | <b>ST. BONAVENTURE</b>   | <b>8:00 p.m.</b> | <b>ESPNU</b>   | <b>1210</b> | A10N            |
| 1/10         | at George Mason          | 7:00 p.m.        |                | TBA         | A10N            |
| 1/14         | at Massachusetts         | 5:00 p.m.        | NBCSN          | 1210        | NBCSports       |
| <b>1/17</b>  | <b>DAYTON</b>            | <b>6:30 p.m.</b> | <b>CBSSN</b>   | <b>990</b>  |                 |
| <b>1/20</b>  | <b>FORDHAM</b>           | <b>1:00 p.m.</b> |                | <b>TBA</b>  | A10N            |
| 1/24         | at St. Bonaventure       | 7:00 p.m.        | CBSSN          | 990         |                 |
| 1/27         | at Penn (Palestra)       | 7:00 p.m.        | NBCSP          | 1210        |                 |
| <b>1/31</b>  | <b>SAINT LOUIS</b>       | <b>7:00 p.m.</b> |                | <b>1210</b> | A10N            |
| 2/3          | at La Salle              | 4:00 p.m.        | CBSSN          | 1210        |                 |
| 2/6          | at Davidson              | 7:00 p.m.        | Stadium        | 1210        | Stadium         |
| <b>2/10</b>  | <b>MASSACHUSETTS</b>     | <b>4:00 p.m.</b> |                | <b>1210</b> | A10N            |
| 2/14         | at Fordham               | 7:00 p.m.        |                | 1210        | A10N            |
| <b>2/17</b>  | <b>DUQUESNE</b>          | <b>6:00 p.m.</b> |                | <b>1210</b> | A10N            |
| <b>2/21</b>  | <b>GEORGE MASON</b>      | <b>7:00 p.m.</b> |                | <b>1210</b> | A10N            |
| 2/24         | at Richmond              | 6:00 p.m.        | NBCSP+,NBCSW+  | 1210        |                 |
| 2/27         | at Rhode Island          | 7:00 p.m.        | CBSSN          | 1210        |                 |
| <b>3/3</b>   | <b>LA SALLE</b>          | <b>2:00 p.m.</b> |                | <b>1210</b> | <b>Facebook</b> |
| 3/7-11       | Atlantic 10 Championship |                  |                |             |                 |

Audio streaming of all games on SJUHawks.com

A10N= A-10 Network

CBSSN= CBS Sports Network; NBCSN= NBC Sports Network; NBCSP= NBC Sports Philadelphia; NBCSP+= NBC Sports Philadelphia+; NBCS CHI= NBC Sports Chicago; NBCSW+= NBC Sports Washington+

1210= Talk Radio 1210 WPHT AM; 990= News Talk 990 AM WNTP

## STATISTICAL COMPARISON

### '17-18 Stats

|                       | SJU  | VU   |
|-----------------------|------|------|
| Overall Record        | 4-3  | 7-0  |
| Conference Record     | 0-0  | 0-0  |
| Home Record           | 2-0  | 3-0  |
| Away Record           | 1-1  | 4-0  |
| Neutral Record        | 1-2  | 0-0  |
| Points per Game       | 77.6 | 85.3 |
| Opp. Points/Game      | 75.6 | 62.9 |
| Field Goal Pct.       | .421 | .505 |
| Opp. Field Goal Pct.  | .430 | .416 |
| 3-Pt. FG Made/Game    | 9.0  | 9.3  |
| 3-Pt. FG Pct.         | .339 | .378 |
| Opp. 3-Pt. FG Pct.    | .342 | .325 |
| Free Throws Made/Game | 14.9 | 15.1 |
| Free Throw Pct.       | .662 | .779 |
| Rebounds/Game         | 38.4 | 37.3 |
| Opp. Rebounds/Game    | 37.0 | 31.1 |
| Assists/Game          | 14.1 | 15.6 |
| Turnovers/Game        | 8.7  | 11.4 |
| Opp. Turnovers/Game   | 11.4 | 15.4 |
| Steals/Game           | 7.0  | 8.3  |
| Blocks/Game           | 3.6  | 3.3  |

## SERIES HISTORY

### SAINT JOSEPH'S vs. VILLANOVA

**All-Time Series:** VU 49-25  
**SJU Streak:** 5 losses  
**First Meeting:** 1/15/21, VU 31-22  
**Last Meeting:** 12/3/16, VU 88-57  
**Last SJU Win:** 12/17/11, 74-58  
**Last VU Win:** 12/3/16, 88-57  
**Coach Martelli vs. VU:** 4-16

#### Last 6 Games

|          |   |       |   |
|----------|---|-------|---|
| 12/3/16  | L | 57-88 | A |
| 12/1/15  | L | 72-86 | H |
| 12/6/14  | L | 46-74 | A |
| 12/7/13  | L | 68-98 | H |
| 12/11/12 | L | 61-65 | A |
| 12/17/11 | W | 74-58 | H |

- Villanova has won five in a row and eight of the last 10 meetings versus the Hawks
- SJU's last win came in 2011 at Hagan Arena, 74-58, as Langston Galloway scored 20 points
- This is just the fourth game in the series played on Saint Joseph's campus as all other Hawk "home" games were played at the Palestra
- The game moved back to Hawk Hill on Dec. 17, 2011 and was SJU's last victory in the series

**MORE ON THE SERIES ON PAGE 6**

### LAST TIME OUT

- **James Demery** had 20 points and **Shavar Newkirk** had 19 points and 10 rebounds to lead Saint Joseph's to an 83-70 win over Bucknell
- **Chris Clover** added a season-high 17 points, as he scored 14 in the first half alone
- It was the first career double-double for Newkirk, who also had six assists, while **Pierfrancesco Oliva** grabbed 10 rebounds
- The Hawks led for all but two minutes at the start of the game and by as much as 20 points in the second half

### DEE-FENSE

- The Hawks held Bucknell to just 70 points, well below the Bison's average of 85
- BU shot just 34% from the field and 14% from three-point range, well below their overall percentages of 47% and 39%, respectively
- SJU is one of the top teams in the A-10 in defensive rebounding, ranking first in defensive rebounds with 28.0 per game

### KEY TO THE CITY

- This is the first Big 5 game of the year for the Hawks, and the first of two consecutive
- SJU went 1-3 in the Big 5 last season with a win over Penn
- Saint Joseph's has won 20 Big 5 titles (9 outright/11 shared), which is behind Temple's 27 titles (6/21 shared) and Villanova's 25 (14 outright/11 shared)

### HAWKS VS. THE TOP 25

- Saint Joseph's is 3-10 against ranked teams over the past four seasons
- The last win over a Top 25 team came on Feb. 17, 2016 when SJU defeated #15 Dayton at Hagan Arena, 79-70, snapping a five-game losing streak against ranked squads
- This is the highest ranked team faced by the Hawks since last year's game against #2 Villanova, an 88-57 SJU loss
- SJU's all-time wins over Top 5 teams are:
  - 2/7/84 vs. #2 DePaul (Palestra), W 58-45
  - 3/14/81 vs. #1 DePaul (NCAA Tourn.), W 49-48
  - 12/5/64 vs. #4 Davidson (Palestra), W 74-66
  - 12/29/64 vs. #2 Wichita State (Palestra), 76-69
  - 2/22/64 vs. #5 Villanova (Palestra), 69-63
  - 1/11/61 vs. #5 St. John's (Palestra), 74-71

### TAKING CARE OF THE BALL

- Saint Joseph's ranks third in the nation in fewest turnovers per game with 8.7 as they have just 61 on the year
- SJU has recorded single digits in turnovers in four of seven games, with a low of four in the win over Princeton
- The Hawks also rank 11th in the NCAA stats in fewest turnovers (61) and assist/turnover ratio (1.62)

### STARRING SHAVAR

- **Shavar Newkirk** has put up solid numbers since making his return from an ACL injury, averaging a team-high 17.4 points
- **Phil Martelli** knows Newkirk has made progress but sees even more to come from his senior: "There's still more there. I don't think he's playing like Shavar yet, and I don't think it's his leg. I think it's conditioning. He spent 10 months trying to get back on the court but he hasn't spent time yet to be conditioned to play. That's the most minutes he's played (Bucknell game), and even that was a little bit of a stretch... But I applauded him in front of his teammates for his courage to be out there. Even saying that, 19 points, 10 rebounds, and six assists was an All-League night. He's going to make shots at a high rate, and I'm happy he came out with no turnovers."

### LUCKY CLOVER

- Junior **Chris Clover** had the game the Hawks were waiting for against Bucknell as he surpassed his season-high by the end of the first half with 14 points
- He finished the game with 17 points on 6-for-11 shooting, including a career-high 4-of-6 from three-point range
- **Phil Martelli** said after the win, "He has scored a lot of points in his basketball life and the first six games, he has not played well . . . My thing is, go play and make some shots. He obviously made his first and then played well from there."

### DEMERY'S DOUBLES

- **James Demery** has scored double figures in all seven games, with a high of 25 at UIC; he's averaging a career-best 17.1 points per game
- He notched his first double-double (18 pts, 10 rebs) of the season against Harvard and now has four in his career

### STREAK ENDER

- **Shavar Newkirk** saw his 17-game double-figure scoring streak come to an end vs. Harvard when he scored nine points, but he bounced back with 22 points vs. Sacramento State
- It was the first single-digit game for Newkirk since March 18, 2016, when the Hawks defeated Cincinnati in the NCAA First Round

### RALLY CAPS

- The Hawks rallied from a 12-point deficit with 11:51 left against Sacramento St. to earn the 74-69 win, which was the largest deficit overcome for a win this season

### FOUL BALL

- Free-throw shooting was one of the Hawks' glaring weaknesses last season and SJU is off

to a slow start this year, hitting 66.2 percent  
 • **Shavar Newkirk** is the squad's best from the line as he's hitting 81.1 percent and made a career-best 11-for-14 free throws in the Sacramento State win

**DOING THE OTHER THINGS**

• **Pierfrancesco Oliva** only scored five points in the Washington State game but had a career-high 10 rebounds and six assists  
 • He followed that with a career-high 16 points against Harvard  
 • Oliva also grabbed 10 rebounds vs. Bucknell and is the Hawks' leader in rebounding (7.4) and assists (3.1)

**LOOK AT LORENZO**

• The play of redshirt freshman **Lorenzo Edwards** in the Wooden Legacy was a bright spot for the Hawks  
 • Against Harvard, he recorded career-highs of seven points and seven rebounds  
 • He bettered those numbers in the Sacramento State win with 10 points, for his first-ever game in double figures and had a career-high nine rebounds vs. SSU  
 • Edwards redshirted the '16-17 season after having shoulder surgery last December

**HOME SWEET HOME**

• This is the second in a four-game stretch of contests in Philadelphia, after the Hawks played five of their first six away from home  
 • SJU will go crosstown to visit Temple on Dec. 9 before returning home to host Maine on Dec. 17

**TAYLOR MADE**

• Freshman **Taylor Funk** was named the A-10 Rookie of the Week for Nov. 20  
 • He averaged 22.5 points in two wins while shooting 64% from 3-point range and 69% from the field  
 • Funk scored 22 points in the win over UIC, and sent the game into overtime by hitting a 3-pointer at 40.6 seconds  
 • He had a career-high 23 points against Princeton, making 7-of-8 field goals, with 5-of-6 from three-point range

**INJURY PRONE**

• The injury bug has hit the Hawks again, with **Lamarr Kimble** and **Charlie Brown** both out of action  
 • Kimble's season-ending injury is the fifth in two years for the Hawks  
 • Brown has missed all seven games but is hopeful of making a return in the next few weeks  
 • The absence of Kimble and Brown leaves 769 total points (from last year) on the bench

**LOSS OF LAMARR**

• The loss of captain **Lamarr Kimble** for the season is a undoubtedly a huge one  
 • He averaged 15.5 ppg last season and was the team leader with 107 assists  
 • The junior has scored double figures 32 times in 61 games and has 599 career points  
 • **Chris Clover** has started in the backcourt in his absence

**GOOD AS NEWKIRK**

• **Shavar Newkirk** had an impressive debut at Toledo, less than 10 months after surgery to repair a tear to his ACL, suffered on Dec. 30  
 • The senior played 17 minutes and had 21 points, making 6-of-12 from the field  
 • **Phil Martelli** gave credit to the athletic trainer (Bill Lukasiewicz) and strength coach (Brian Bingham) for their work with the senior, and praised Newkirk's "courage and heart", saying it is a "learned behavior"

**FAB FROSH**

• **Taylor Funk** scored 61 points in his first three collegiate games, a total which ranks as the second best debut in SJU history. The others with top career-beginning efforts are:  
 • Bernard Blunt (1990-91) 67 pts (24 + 21 + 22)  
 • **Taylor Funk** (2017-18) 61 pts (16 + 22 + 23)  
 • Craig Amos (1988-89) 49 pts (24 + 6 + 19)  
 • Carl Jones (2009-10) 47 pts (13 + 18 + 16)  
 • DeAndre' Bemby (2013-14) 40 pts (11 + 9 + 20)  
 • Langston Galloway (2010-11) 32 pts (13 + 11 + 8)

**MAGIC NUMBER**

• **Taylor Funk** leads SJU in three-pointers (22) and is wearing the same number (33) as a former Hawk sharpshooter, Pat Carroll  
 • Carroll was the 2005 A-10 Player of the Year and was SJU's leader in career three-point field goals (294) until Langston Galloway broke that record in 2014 with 343

**RETURNING HAWKS**

• The Hawks returned over 80 percent of their points (89%), rebounds (82%) and assists (88%) from last year, which was among the top numbers in the nation  
 • SJU's number of 89 percent of points returning and 88 percent of assists ranked as the fifth best numbers in the nation  
 • Saint Joseph's total of 82 percent of returning rebounds was tied for ninth best

**DEAN OF COACHES**

• Now in his 23rd season as Saint Joseph's head coach, **Phil Martelli** is the dean of A-10 coaches. He's the Hawks' leader in wins with a 418-296 record  
 • His record of 202-156 in A-10 play marks the most conference wins for any active coach and ranks second all-time in the league

**HAWK DOUBLES**

| Double-Figure Point Games |        |        |        |
|---------------------------|--------|--------|--------|
|                           | '17-18 | Streak | Career |
| James Demery              | 7      | 9^     | 47     |
| Shavar Newkirk            | 6      | 2      | 30     |
| Taylor Funk               | 4      | --     | 4      |
| Pierfrancesco Oliva       | 1      | --     | 3      |
| Lorenzo Edwards           | 1      | --     | 1      |
| Chris Clover              | 1      | 1      | 10     |
| Lamarr Kimble             | 1      | 9^     | 33     |
| Charlie Brown             | --     | 17^    | 25     |
| Markell Lodge             | --     | --     | 4      |
| Nick Robinson             | --     | --     | 4      |

| 20-Plus Point Games |        |        |        |
|---------------------|--------|--------|--------|
|                     | '17-18 | Streak | Career |
| Shavar Newkirk      | 3      | 1      | 10     |
| Taylor Funk         | 2      | --     | 2      |
| James Demery        | 2      | 1      | 4      |
| Charlie Brown       | --     | --     | 1      |
| Lamarr Kimble       | --     | --     | 4      |
| Chris Clover        | --     | --     | 2      |

| Double-Figure Rebound Games |        |        |        |
|-----------------------------|--------|--------|--------|
|                             | '17-18 | Streak | Career |
| Pierfrancesco Oliva         | 2      | 1      | 2      |
| James Demery                | 1      | --     | 4      |
| Shavar Newkirk              | 1      | 1      | 1      |
| Markell Lodge               | --     | --     | 1      |

| Double-Figure Assist Games |        |        |        |
|----------------------------|--------|--------|--------|
|                            | '17-18 | Streak | Career |
| Lamarr Kimble              | --     | --     | 1      |

| Double-Doubles |        |        |        |
|----------------|--------|--------|--------|
|                | '17-18 | Streak | Career |
| James Demery   | 1      | --     | 4      |
| Shavar Newkirk | 1      | 1      | 1      |
| Lamarr Kimble  | --     | --     | 1      |

^ dating back to 2016-17 season

• Martelli is one of 25 active D-1 coaches who are their schools' all-time wins leaders

**WORKING FOR A CAUSE**

• **Phil Martelli** and Jay Wright are heavily involved in the Philadelphia Coaches vs. Cancer effort, which is one of the nation's highest fundraising groups for Coaches vs. Cancer. The group, which is comprised of the city's six Division I coaches and their wives, raised over \$1 million last year.  
 • Martelli is the co-chair of the local group and is also the chair of the National Coaches vs. Cancer Council.

**HE'S BACK**

• **Pierfrancesco "Checco" Oliva** is back in the lineup after missing the 2016-17 season with a knee injury  
 • Oliva had a chronic knee condition that he aggravated in the summer of 2016 and required surgery with a year-long rehab  
 • The 6-8 forward from Taranto, Italy, was a starter in 30 games for the 2016 A-10 Champions

**CHARTING CHARLIE**

• A-10 All-Rookie selection **Charlie Brown, Jr.**, was the only freshman in Division I last year to average over 12-plus points (12.8), 5-plus

rebounds (5.0), less than two turnovers (1.2) and shoot over 38 percent (38.5) from three-point range

- Brown was also the Hawks' best at the foul line, hitting 81.9 percent

**FROM THE START**

- **Anthony Longpré** became the fifth freshman in five years to be in the starting lineup on opening day
- Previous freshman starters for SJU were: **Pierfrancesco Oliva** (2015-16), **James Demery** (2014-15) and DeAndre' Bemby (2013-14)

**THREE-POINT THREAT**

- **Charlie Brown, Jr.**, set the SJU freshman record for three-pointers made last season with 71 and converted a team-best 38.4 percent from beyond the arc

**WOODEN WRAPUP**

- The Hawks came out of the Wooden Legacy with a 1-2 record and seventh place in the tourney
- SJU lost to eventual tourney champion Washington State, as well as Harvard, while defeating Sacramento State
- **Shavar Newkirk** led the Hawks in scoring in the three games, with 18.3 per game

**THEIR KIND OF TOWN... CHICAGO**

- Chicago-area natives **Nick Robinson** and **Lorenzo Edwards** contributed in the win at UIC, in front of their families and friends
- Robinson scored seven points and grabbed six rebounds
- Edwards, who was playing in just his second-career game, saw 11 minutes of action and hit the first three-pointer of his career

**AN UNUSUAL YEAR**

- The Hawks return five starters from a season that was unlike any other under **Phil Martelli**, as four players missed significant time with injuries in 2016-17
- The injured players, with games missed in ( ) were: **Shavar Newkirk** (19), **Pierfrancesco Oliva** (entire season), **Lorenzo Edwards** (all but one game) and **Lamarr Kimble** (7)
- **James Demery** was also on the early-season injured list as he suffered a stress fracture in the 2016-17 season opener
- Demery missed 10 games but ironically returned to action on Dec. 30, 2016, the game in which Newkirk suffered the torn ACL
- Martelli used eight different starting lineups last season
- In the final few games of last season, the Hawks were down to 13 available players, with only nine on scholarship

**TWIN TOWERS**

- The Hawks welcome a pair of 6-foot-9-plus forwards into the fold this year, with **Taylor Funk** and **Anthony Longpré**
- Funk averaged 24.3 ppg and made 64 three-pointers as a senior at Manheim Central (Pa.), connecting and is the school's all-time leading scorer (1,977 points)
- Longpré, who grew up in Quebec but played scholastically at Glenelg Country School (Md.), played for Canada's U19 National Team which won the gold medal at the FIBA U19 Basketball World Cup in Egypt, for their first-ever gold in international competition

**CAPTAIN HAWK**

- Junior **Lamarr Kimble** was chosen as team captain, marking the second year in a row that Kimble will serve in the role, as he was a tri-captain in 2016-17
- Last year he was the second sophomore in three seasons to be named a team captain, and the third all-time following DeAndre' Bemby (2014-15) and Joe Oakes, captain of the famed "Mighty Mites" team in 1936-37

**HONOR ROLL**

- **Taylor Funk** - Atlantic 10 Rookie of the Week (11/20)
- **Shavar Newkirk** - Preseason Atlantic 10 All-Conference 2nd Team
- **Lamarr Kimble** - Preseason All-A-10 3rd Team
- **Charlie Brown, Jr.** - Preseason All-A-10 3rd Team

**NICK OF TIME**

- With the injury to **Lamarr Kimble**, **Nick Robinson** will serve as the backup point guard again this season
- Kimble's injury in 2016-17 pressed Robinson into those duties for the final seven games of the year

**MARKELL'S MARK**

- **Markell Lodge** is the only Hawk who started all 31 games last season
- He is one of the most athletic players in school history and holds the SJU mark for vertical leap at 40 inches

**A NEW MAN**

- **Jai Williams** has lost over 60 pounds since coming to campus in 2013-14, now weighing in at 235 pounds
- He redshirted the '13-14 season to further his development

**HAWKS IN THE NBA**

- Saint Joseph's is currently represented in the NBA by three players:
- Jameer Nelson (Pelicans) - NBA All-Star in 2009, who is in his 14th year in the league

**HAWKS IN THE A-10 STATS**

(thru games of Nov. 30)

|                        | Category        | All        | A-10        |
|------------------------|-----------------|------------|-------------|
| <b>James Demery</b>    | Scoring         | 10th       | --          |
|                        | Steals          | 8th-T      | --          |
| <b>Lorenzo Edwards</b> | Off. Rebs.      | 22nd-T     |             |
| <b>Taylor Funk</b>     | Scoring         | 17th       | --          |
|                        | Rebounding      | 25th-T     | --          |
|                        | FG Pct.         | 14th-T     | --          |
|                        | 3FG Pct.        | 10th       | --          |
|                        | <b>3FG Made</b> | <b>1st</b> | --          |
|                        | Off. Reb.       | 17th-T     | --          |
| <b>A. Longpré</b>      | Blocks          | 12th-T     | --          |
|                        | 3FG Pct.        | 15th       | --          |
| <b>Shavar Newkirk</b>  | Scoring         | 8th        | --          |
|                        | Steals          | 17th-T     | --          |
| <b>P. Oliva</b>        | Rebounding      | 7th-T      | --          |
|                        | Def. Rebs.      | 7th-T      | --          |
| <b>Nick Robinson</b>   | Ast/TO Ratio    | 4th        |             |
| <b>TEAM</b>            | <b>Category</b> | <b>All</b> | <b>A-10</b> |
|                        | Scoring Off     | 4th        | --          |
|                        | Scoring Def     | 12th-T     | --          |
|                        | Scoring Marg    | 6th-T      | --          |
|                        | FT Pct.         | 12th       | --          |
|                        | FG Pct.         | 11th       | --          |
|                        | FG Pct. Def     | 4th        | --          |
|                        | 3FG Pct.        | 7th        | --          |
|                        | 3FG Pct. Def    | 7th        | --          |
|                        | Reb. Offense    | 1st        | --          |
|                        | Reb. Defense    | 12th       | --          |
|                        | Reb. Margin     | 10th       | --          |
|                        | Blocks          | 7th        | --          |
|                        | Assists         | 6th        | --          |
| Steals                 | 7th-T           | --         |             |
| TO/Game                | <b>1st</b>      |            |             |
| TO Marg                | 6th             | --         |             |
| Ast/TO Ratio           | 2nd             | --         |             |
| Off. Rebs              | 6th             | --         |             |
| Def. Rebs              | 1st             | --         |             |
| Def. Reb. Pct.         | 2nd             | --         |             |
| Off. Reb. Pct.         | 10th            | --         |             |
| 3FG Made               | 3rd             | --         |             |

- Langston Galloway (Pistons) - was undrafted in 2014 but made the Knicks' squad as a free agent; played for the Pelicans and Kings before joining the Pistons this year
- DeAndre' Bemby (Hawks) - 21st overall draft pick in 2016, becoming the 33rd SJU player to be drafted, and the sixth to be taken in the first round

**HOME AT HAGAN**

- This marks the ninth season of the Hawks' home, Hagan Arena, after Alumni Memorial Fieldhouse underwent a renovation and expansion in 2008-09
- SJU is 73-50 at Hagan but owns an all-time record of 392-122 in 68 years on campus

**POLLING PLACES**

- Saint Joseph's was picked to finish third in the Atlantic 10 Preseason Poll, as voted on by media and the league's coaches
- It marks the highest preseason selection for Saint Joseph's since the 2012-13 campaign when the Hawks were picked first
- SJU has won two conference titles in the past four years, capturing the championship in both 2014 and 2016

**CRADLE OF COACHES**

The Saint Joseph's coaching connection is an impressive one. A total of seven SJU graduates have gone on to become head coaches in the NBA, and SJU is tied with Illinois for second on the list of universities with alums that have served as NBA head coaches. Indiana tops the list with 11 graduates. Here is the list of former Hawks who have held positions as NBA head coaches:

| Player (Class)       | NBA Teams                    | Years |
|----------------------|------------------------------|-------|
| Jack Ramsay ('49)    | Phila., Buf. Port., Ind.     | 21    |
| Jim Lynam ('63)      | L.A. Clippers, Phila., Wash. | 10    |
| Matt Guokas ('67)    | Phila., Orlando              | 7     |
| Paul Westhead ('61)  | L.A. Lakers, Chicago, Denver | 6     |
| Jack McKinney ('57)  | L.A. Lakers, Indiana         | 5     |
| George Senesky ('43) | Philadelphia                 | 3     |
| Jim O'Brien ('74)    | Indiana, Phila., Boston      | 8     |

**ALL IN THE FAMILY**

- **Phil Martelli's** staff consists of three former Hawk players, including his son, Phil, Jr., who is in his first year as the director of program administration
- **Mark Bass**, now in his 19th year as assistant coach, was a junior on Martelli's first team in 1995-96, and helped SJU reach the NIT Final
- **Geoff Arnold** played for the Hawks from 1982-86, and was a member of the 1986 Atlantic 10 Championship team
- **Phil Martelli, Jr.**, was a member of the Hawks from 2000-03 and has been an assistant coach at Central Connecticut State, Niagara and Delaware

**LOOKING AHEAD**

- Saint Joseph's remains in Philadelphia for two more when it visits Big 5 foe Temple (Dec. 9) and hosts Maine (Dec. 17)
- The Hawks will participate in the Hall of Fame Holiday Showcase on Dec. 20 facing St. John's in a doubleheader at Mohegan Sun Arena



**THE RIVALRY**

The Saint Joseph's- Villanova rivalry is one of the most intense in college basketball as just 6.7 miles separates the two Big 5 schools that are rich in basketball tradition.



Here's a look at some of the most memorable games in the series history:

- **Dec. 11, '12: VU 65-61: Langston Galloway** hit six three-pointers and scored 22 points, but Villanova used a 9-0 run at the end of the game to edge the Hawks in a game in which neither team led by more than five points.
- **Dec. 17, '11: SJU 74- VU 58:** SJU students postpone their semester break to provide a high-energy atmosphere at Hagan Arena, in the first time the rivals played on SJU's campus. Langston Galloway led the Hawks with 20 points.
- **Dec. 9, '09: #3 VU 97- SJU 89:** #3 Villanova held off Saint Joseph's in front of a sold-out crowd at the Palestra. The Hawks' Idris Hilliard had a near-perfect shooting night, going 5-for-5 and making 12-of-13 free throws for a career-high 22 points while Scottie Reynolds scored 20 for Villanova.
- **Dec. 11, '08: #15 VU 59- SJU 56:** The Hawks keep the Pavilion crowd quiet for most of the game but two Scottie Reynolds free throws at :05 and two Hawk turnovers end SJU's upset bid.
- **Feb. 8, '08: SJU 77- VU 55:** The Hawks snap their three-game losing streak against Villanova before a capacity and pro-SJU crowd at The Palestra.
- **Feb. 7, '06: #4 VU 71- SJU 58:** For only the fourth time in Big 5 history, two 3-0 teams play for the city title. SJU couldn't sustain its play from the first 20 minutes as VU comes on strong in the second half to win in the sold-out Palestra in the game that marks the 50th anniversary of the Big 5.
- **Feb. 2, '04: #3 SJU 74- VU 67:** Jameer Nelson and Delonte West combine for 44 points to lead the 3rd-ranked Hawks to their 19th straight win in the standing-room-only Pavilion.
- **Feb. 3, '03: SJU 92-75:** Hawks roll to a 40-9 lead en route to the win.
- **Dec. 11, '00: SJU 78- VU 75:** Michael Bradley has 20 pts, 10 rebs.
- **Dec. 18, '94: SJU 60- VU 57:** Dmitri Domani hits two late free throws to cap a Hawks' comeback.
- **Dec. 8, '90: VU 83- SJU 82:** Marc Dowdell hits two free throws at :05 and the Hawks' Richard Stewart makes a layup instead of taking a 3-pointer.
- **Dec. 12, '87: SJU 53- VU 52:** Ivan "Pick" Brown, who shoots 2-for-15 in the game, rebounds a missed free throw with :08 to go and drives upcourt, sinking a bank shot at the buzzer.
- **Feb. 19, '87: VU 88- SJU 87:** Double OT classic ending with missed shots by the Hawks' Bruiser Flint and Jack Concannon.
- **Feb. 19, '85: VU 47- SJU 44:** Controversial ending as Dwayne McClain hits a baseline jumper and free throw with :02 left.
- **Jan. 31, '82: SJU 84-VU 64:** Bryan Warrick scores 23 points while both teams are NCAA-bound.
- **Feb. 19, '77: VU 92- SJU 78:** 'Nova wins the first Big 5 game played away from the Palestra (at the Spectrum).
- **Jan. 27, '73: VU 79, SJU 72:** Double OT game where Ed Hastings and Tom Inglesby combined for 43 points.
- **Feb. 20, '71: VU 63- SJU 55:** Classic duel between Mike Bantom and Howard Porter.
- **Jan. 16, '66: SJU 71- VU 69:** In one of the most memorable shots in Hawk history, Steve Donches, who entered the game in the final minutes, hits the game-winning jumper at the buzzer.
- **Feb. 20, '65: SJU 69- VU 61:** A bomb scare overshadows the game.
- **Jan. 12, '63: VU 63- SJU 61:** Eric Erickson's layup at :04 wins it in OT.
- **Mar. 3, '62: VU 66- SJU 59:** Hubie White had 23 pts and 17 rebs.
- **Feb. 12, '58: SJU 86- VU 82:** Trailing 52-35, the Hawks rally to win in OT.
- **Dec. 14, '55: SJU 83- VU 70:** First-ever Big 5 game in front of 2,636 fans where Al Juliana came off the bench to score 22 points.

**All-Time Series Record: Villanova leads 49-25  
Saint Joseph's - Villanova Series since 1980**

|          |   |        |             |          |   |           |          |
|----------|---|--------|-------------|----------|---|-----------|----------|
| 12/3/16  | L | 57-88  | Pavilion    | 12/1/98  | L | 49-61     | Palestra |
| 12/1/15  | L | 72-86  | Hagan Arena | 12/23/96 | L | 65-81     | Pavilion |
| 12/6/14  | L | 46-74  | Pavilion    | 12/18/94 | W | 60-57     | Palestra |
| 12/7/13  | L | 68-98  | Hagan Arena | 2/6/93   | W | 77-66     | Spectrum |
| 12/11/12 | L | 61-65  | Pavilion    | 12/8/90  | L | 82-83     | Spectrum |
| 12/17/11 | W | 74-58  | Hagan Arena | 1/20/90  | L | 62-69     | Pavilion |
| 12/13/10 | L | 60-71  | Pavilion    | 1/24/89  | L | 55-69     | Palestra |
| 12/9/09  | L | 89-97  | Palestra    | 12/12/87 | W | 53-52     | Pavilion |
| 12/11/08 | L | 56-59  | Pavilion    | 2/19/87  | L | 87-88 2OT | Palestra |
| 2/4/08   | W | 77-55  | Palestra    | 12/21/85 | W | 63-61     | Palestra |
| 2/6/07   | L | 39-56  | Pavilion    | 2/19/85  | L | 44-47     | Spectrum |
| 2/7/06   | L | 71-58  | Palestra    | 11/30/83 | L | 50-57 OT  | Palestra |
| 2/7/05   | L | 67-52  | Palestra    | 2/22/83  | L | 62-70     | Spectrum |
| 2/2/04   | W | 74-67  | Pavilion    | 1/31/82  | W | 84-64     | Palestra |
| 2/3/03   | W | 92-75  | Palestra    | 2/28/81  | L | 62-72     | Palestra |
| 1/28/02  | L | 73-102 | Pavilion    | 2/23/80  | W | 60-59     | Palestra |
| 12/11/01 | L | 75-78  | Palestra    |          |   |           |          |
| 2/17/00  | L | 61-68  | Pavilion    |          |   |           |          |

**FREE THROW SHOOTING**

**Final 5:00 of game**

| Player              | FTM | FTA | Pct.  |
|---------------------|-----|-----|-------|
| Taylor Funk         | 2   | 2   | 1.000 |
| Shavar Newkirk      | 21  | 26  | .808  |
| James Demery        | 8   | 16  | .500  |
| Pierfrancesco Oliva | 3   | 6   | .500  |
| Nick Robinson       | 1   | 3   | .333  |

**Final 1:00 of game**

| Player         | FTM | FTA | Pct.  |
|----------------|-----|-----|-------|
| Nick Robinson  | 1   | 1   | 1.000 |
| Shavar Newkirk | 11  | 14  | .786  |
| James Demery   | 5   | 8   | .625  |

**LEADS/DEFICITS**

**Biggest Leads**

|                | Lead | Result     |
|----------------|------|------------|
| Bucknell       | 20   | 83-70 Win  |
| Washington St. | 20   | 75-71 Loss |
| Princeton      | 15   | 71-58 Win  |

**Biggest Deficits**

|                  | Deficit | Result       |
|------------------|---------|--------------|
| Toledo           | 17      | 98-87 Loss   |
| Harvard          | 14      | 77-71 Loss   |
| Sacramento State | 12      | 74-69 Win    |
| UIC              | 11      | 86-82 Win ot |

**THE LAST TIME . . .**

**SAINT JOSEPH'S . . .**

Won in overtime . . . . . 86-82 at UIC, 11/13/17  
 Lost in overtime . . . . . 70-60 vs. St. Bonaventure, 2/21/15  
 Won in double overtime . . . . . 83-81 over Lafayette, 12/29/00  
 Lost in double overtime . . . . . 86-83 to Fordham, 2/4/17  
 Won in triple overtime . . . . . 92-86 over Rhode Island, 1/10/09  
 Played a Top 10 opponent . . . . . 88-57 loss at #2 Villanova, 12/3/16  
 Played a ranked opponent . . . . . 88-57 loss at #2 Villanova, 12/3/16  
 Defeated a Top 10 opponent . . . . . 71-66 win over #8 Xavier, 3/6/08  
 Defeated a Top 25 opponent . . . . . 79-70 win over #15/13 Dayton, 2/17/16  
 Was ranked in the Top 25 . . . . . #25 by USA Today, 3/14/16  
 Won by 50 points or more . . . . . 114-63 (51 pts) over St. Bonaventure, 1/24/04  
 Won by 40-49 points . . . . . 82-42 (40 pts) over Penn, 1/19/08  
 Won by 30-39 points . . . . . 81-44 (37 pts) over Rhode Island, 3/6/13  
 Won by 20-29 points . . . . . 92-63 (29 pts) over Lafayette, 12/22/16  
 Scored 100 points or more . . . . . 114-63 win over St. Bonaventure, 1/24/04  
 Scored less than 50 points . . . . . 60-49 loss to St. Bonaventure, 3/12/15  
 Shot 60 percent or better . . . . . 64.8% vs. VCU, 3/13/16  
 Shot 50-59 percent . . . . . 52.8% at Fordham, 1/7/17  
 Shot under 30 percent . . . . . 25.5% vs. St. Bonaventure, 3/12/15  
 Made 10 or more 3-point field goals . . . . . 10 vs. Bucknell, 11/29/17  
 Did not make any 3-point field goals . . . . . 0 vs. Massachusetts, 2/26/09  
 Totaled 50 or more rebounds . . . . . 58 at Princeton, 12/14/16  
 Had less than 25 rebounds . . . . . 19 at La Salle, 2/16/13  
 Totaled 20 or more assists . . . . . 21 vs. Saint Louis, 2/28/16  
 Had 20 or more turnovers . . . . . 20 at #20 VCU, 1/10/15  
 Had 15 or more steals . . . . . 15 vs. Lehigh, 12/20/09  
 Had 10 or more blocks . . . . . 10 at Duquesne, 1/12/13  
 Had 4 players in double figures . . . . . vs. Sacramento State, 11/26/17  
 Had 5 players in double figures . . . . . vs. St. Bonaventure, 2/22/17

**A SAINT JOSEPH'S PLAYER . . .**

Scored 40 or more points . . . . . 47, Tony Costner vs. Ak.-Anchorage, 12/30/83\*\*  
 Scored 30 or more points . . . . . 30, DeAndre' Bembry vs. VCU, 3/13/16  
 Scored 25-29 points: . . . . . 25, James Demery at UIC, 11/13/17  
 Scored 20-24 points: . . . . . 20, James Demery vs. Bucknell, 11/29/17  
 Made 8 or more 3-point field goals: . . . . . 10, Langston Galloway vs. Fordham, 2/22/14 \*\*  
 Made 10 or more free throws: . . . . . 11, Shavar Newkirk vs. Sacramento St., 11/26/17  
 Shot 100 percent from the field (min. 5 md) 6-for-6, Ronald Roberts, Jr. vs. VCU, 3/16/14  
 Attempted 15 or more free throws: . . . . . 15, DeAndre' Bembry vs. Drexel, 11/13/15  
 Attempted 20 or more field goals: . . . . . 21, Shavar Newkirk vs. Washington St., 11/23/17  
 Had 10-19 rebounds: . . . . . 10, Shavar Newkirk vs. Bucknell, 11/29/17  
 Had 20 or more rebounds: . . . . . 20, Ahmad Nivins vs. Rhode Island, 1/10/09  
 Had 10 or more blocks: . . . . . 10, Dwayne Jones vs. St. Bonaventure, 3/19/05  
 Had 5-9 blocks: . . . . . 5, Javon Baumann at La Salle, 1/27/15  
 Had 5 or more steals: . . . . . 5, DeAndre' Bembry at La Salle, 1/27/15  
 Had 10 or more assists: . . . . . 12, Halil Kanacevic at Penn, 1/18/14  
 Had a double-double: . . . . . Shavar Newkirk vs. Bucknell, 11/29/17  
 Had a triple-double: . . . . . Dwayne Jones (11 pts, 11 rebs, 10 blk)  
 . . . . . vs. St. Bonaventure, 2/19/05  
 Played 40 minutes (in regulation): . . . . . James Demery vs. Sacramento State, 11/26/17

**AN OPPONENT . . .**

Scored less than 50 points . . . . . 42 by Loyola Maryland, 12/9/14  
 Scored less than 40 points . . . . . 35 by Yale, 11/12/12  
 Shot under 30 percent . . . . . 28.3% by Loyola Maryland, 12/9/14  
 Shot 60 percent or better . . . . . 63.5% by St. Bonaventure (3/2/16)  
 Scored 100 points or more . . . . . 104 by Iona, 11/23/11

\*\* Denotes school record

**HAWK LEADERS**

(number of games led in each category; includes shared highs)

|                     | <u>Points</u> | <u>Rebounds</u> | <u>Assists</u> | <u>Steals</u> | <u>Blocks</u> |
|---------------------|---------------|-----------------|----------------|---------------|---------------|
| Shavar Newkirk      | 3             | 1               | 4              | 1             | 1             |
| James Demery        | 3             | 2               | 0              | 4             | 1             |
| Nick Robinson       | 0             | 0               | 1              | 0             | 1             |
| Taylor Funk         | 1             | 2               | 1              | 0             | 2             |
| Anthony Longpré     | 0             | 1               | 1              | 1             | 3             |
| Pierfrancesco Oliva | 0             | 2               | 2              | 1             | 2             |
| Lorenzo Edwards     | 0             | 1               | 0              | 0             | 2             |
| Jai Williams        | 0             | 0               | 0              | 0             | 2             |
| Chris Clover        | 0             | 0               | 0              | 1             | 0             |

**STATS BY HALF**

|          |                                                                        |
|----------|------------------------------------------------------------------------|
| Points   | High: 43 vs. Bucknell (2nd)<br>Low: 28 vs. Harvard (1st)               |
| Rebounds | High: 27 vs. Bucknell (1st)<br>Low: 9 at Toledo (1st)                  |
| Assists  | High: 14 at UIC (1st)<br>Low: 4 (2x) last vs. Sacramento St. (1st)     |
| FG%      | High: 58.1% at Toledo (2nd)<br>Low: 26.7% vs. Harvard (1st)            |
| 3-pt FG% | High: 58.3% at Toledo (2nd)<br>Low: 14.3% vs. Harvard (1st)            |
| FT%      | High: 100% (2-2) at UIC (1st)<br>Low: 33.3% vs. Washington State (1st) |

**INDIVIDUAL HIGHS BY HALF**

|              |                                                                        |
|--------------|------------------------------------------------------------------------|
| Points       | 15, Taylor Funk vs. Princeton (2nd);<br>Shavar Newkirk at Toledo (2nd) |
| Rebounds     | 8, Pierfrancesco Oliva vs. Washington St. (2nd)                        |
| Assists      | 6, Shavar Newkirk vs. Bucknell (1st)                                   |
| Blocks       | 2, Lorenzo Edwards vs. Washington St. (1st)                            |
| FG Made      | 5, Chris Clover vs. Bucknell (1st)                                     |
| 3-pt FG Made | 4, Chris Clover vs. Bucknell (1st)                                     |
| FT Made      | 9, Shavar Newkirk vs. Sacramento St. (2nd)                             |

**STARTERS**

|                   | <b>G</b> | <b>G</b> | <b>F</b> | <b>F</b> | <b>F</b> | <b>Record</b> |
|-------------------|----------|----------|----------|----------|----------|---------------|
| Toledo            | Newkirk  | Kimble   | Demery   | Oliva    | Longpré  | 0-1           |
| Illinois-Chicago  | Newkirk  | Clover   | Demery   | Oliva    | Longpré  | 1-0           |
| Princeton         | Newkirk  | Clover   | Demery   | Oliva    | Longpré  | 2-0           |
| Washington State  | Newkirk  | Clover   | Demery   | Oliva    | Longpré  | 2-1           |
| Harvard           | Newkirk  | Clover   | Demery   | Oliva    | Longpré  | 2-2           |
| Sacramento State  | Newkirk  | Clover   | Demery   | Oliva    | Longpré  | 3-2           |
| Bucknell          | Newkirk  | Clover   | Demery   | Oliva    | Longpré  | 4-2           |
| Villanova         |          |          |          |          |          |               |
| Temple            |          |          |          |          |          |               |
| Maine             |          |          |          |          |          |               |
| St. John's        |          |          |          |          |          |               |
| George Washington |          |          |          |          |          |               |
| VCU               |          |          |          |          |          |               |
| St. Bonaventure   |          |          |          |          |          |               |
| George Mason      |          |          |          |          |          |               |
| Massachusetts     |          |          |          |          |          |               |
| Dayton            |          |          |          |          |          |               |
| Fordham           |          |          |          |          |          |               |
| St. Bonaventure   |          |          |          |          |          |               |
| Penn              |          |          |          |          |          |               |
| Saint Louis       |          |          |          |          |          |               |
| La Salle          |          |          |          |          |          |               |
| Davidson          |          |          |          |          |          |               |
| Massachusetts     |          |          |          |          |          |               |
| Fordham           |          |          |          |          |          |               |
| Duquesne          |          |          |          |          |          |               |
| George Mason      |          |          |          |          |          |               |
| Richmond          |          |          |          |          |          |               |
| Rhode Island      |          |          |          |          |          |               |
| La Salle          |          |          |          |          |          |               |

**HAWKS BY THE NUMBERS**

**SJU's Record in Games....**

|                                  |     |
|----------------------------------|-----|
| Decided by 5 points or less      | 2-1 |
| Decided by 6-10 points           | 0-1 |
| Decided by 11 points or more     | 2-1 |
| Played during the day            | 1-3 |
| Played at night                  | 2-1 |
| Televised                        | 2-3 |
| Home                             | 2-0 |
| Away                             | 1-1 |
| Neutral                          | 1-2 |
| In Overtime                      | 1-0 |
| In November                      | 4-3 |
| In white uniforms                | 3-2 |
| In crimson uniforms              | 1-2 |
| When winning the opening tip-off | 2-1 |

**SJU's Record When Scoring....**

|                     |     |
|---------------------|-----|
| Less than 60 points | 0-0 |
| 60-69 points        | 0-0 |
| 70-79 points        | 2-2 |
| 80-89 points        | 2-1 |
| 90-99 points        | 0-0 |

**SJU's Record When Allowing....**

|                     |     |
|---------------------|-----|
| Less than 60 points | 1-0 |
| 60-69 points        | 1-0 |
| 70-79 points        | 1-2 |
| 80-89 points        | 1-0 |
| 90-100 points       | 0-1 |

**SJU's Record When....**

|                      |     |
|----------------------|-----|
| Leading at the half  | 3-1 |
| Trailing at the half | 1-2 |
| Tied at the half     | 0-0 |

**SJU's Record When Shooting...**

|                      |     |
|----------------------|-----|
| 50% or better        | 0-0 |
| Less than 50%        | 4-3 |
| Less than 30%        | 0-0 |
| Better than opponent | 3-0 |
| Worse than opponent  | 1-3 |

**SJU's Record When...**

|                                   |     |
|-----------------------------------|-----|
| Outrebounding opponent            | 2-2 |
| Outrebounded by opponent          | 2-1 |
| Equal rebounds as opponent        | 0-0 |
| Fewer TOs than opponent           | 3-3 |
| More TOs than opponent            | 1-0 |
| Equal TOs as opponent             | 0-0 |
| Committing 14 or fewer TOs        | 3-3 |
| Committing 15 or more TOs         | 1-0 |
| Newkirk scores double figures     | 4-2 |
| Demery scores double figures      | 4-3 |
| Funk scores double figures        | 3-2 |
| Four players score double figures | 3-1 |
| Five players score double figures | 0-0 |

**MISCELLANEOUS STATS**

**Largest winning margin:** 13 vs. Bucknell, Princeton

**Largest lead in a game:** 20 vs. Bucknell, Washington St.

**Largest margin of defeat:** 11 at Toledo

**Largest deficit in a game:** 17 at Toledo

**Largest deficit overcome to win:** 12 vs. Sacramento St.

**Largest winning margin lost:** 20 vs. Wash. St.





**PHIL MARTELLI**  
**Head Coach**  
**23rd Season - 418-296**

In 23 seasons as head coach at Saint Joseph's, **Phil Martelli** has built a program that is consistently one of the top in the conference, a perennial post-season participant and a key player on the national scene. In doing so, he has earned his place among the top coaches in the school's storied history while becoming one of the more respected coaches in the game.

Martelli is the Hawks' all-time leader in career victories with a mark of 418-296. Setting the school record for wins in a season (30) in 2004, Martelli has guided SJU to 20 or more victories nine times in 23 seasons, which is the most for any Hawk coach. His record of 202-156 in Atlantic 10 play is the most conference wins for any active coach and ranks second all-time in the league.

**Martelli Highlights:**

- He has taken SJU to the postseason in four of the last six years, and 13 times in his 22 seasons, while winning three Atlantic 10 Championships (1997, 2014, 2016)
- Martelli's 18 postseason wins (7 NCAA, 11 NIT) are the most in school history
- His 2015-16 team compiled a 28-8 record for the second-most victories for a Hawk team, won its second Atlantic 10 title in three seasons and advanced to the NCAA Second Round for the first time since 2004
- Four of his players have been named the Atlantic 10 Player of the Year, with the most recent being DeAndre' Bemby in 2015-16
- In 2013-14, his veteran team turned in one of the more memorable seasons in school history, adding another A-10 Championship to his résumé as SJU went 24-10 and reached the NCAA Tournament for the sixth time under Martelli, falling to eventual national champion Connecticut in overtime
- Seven players have reached the NBA, including first round draft picks DeAndre' Bemby (2016), Jameer Nelson (2004) and Delonte West (2004) and a second-round selection, Ahmad Nivins (2009). Dwayne Jones and Ronald Roberts, Jr. had NBA stints while undrafted free agent Langston Galloway earned All-Rookie Second Team honors with the New York Knicks in 2015. Nelson (New Orleans), Galloway (Detroit) and Bemby (Atlanta) are currently playing in the NBA
- In 2003-04, he guided a squad that became the most compelling story in college basketball - the Hawks went undefeated in the regular season, were the top-ranked team in the nation and earned the school's first-ever number-one seed in the NCAA Tournament, advancing to the Elite Eight
- Joined with Jameer Nelson to sweep the National Coach and Player of the Year awards in 2004, marking one of the few times in history that the top player and coach were from the same school
- Current member of the NCAA Division I Basketball Oversight Committee; previously served the game as a Past President of the NABC's Board of Directors, and the NCAA Division I Men's Basketball Ethics Coalition
- Is very involved with Coaches vs. Cancer, is the chair of the National Council, and the co-chair of the Philadelphia chapter, which is one of the largest fundraising groups in this effort in the nation
- Was the co-recipient of the Circle of Honor Award given by the American Cancer Society in 2017, honored along with Temple's Fran Dunphy
- Has spent a total of 33 years with the Hawks' program, serving as an assistant coach for 10 years prior to attaining the top job in July, 1995

**MARTELLI YEAR-BY-YEAR**

| YEAR          | OVERALL    |            | A-10       |            | POSTSEASON           |
|---------------|------------|------------|------------|------------|----------------------|
|               | W          | L          | W          | L          |                      |
| 1995-96       | 19         | 13         | 9          | 7          | NIT Runner-up        |
| 1996-97       | 26         | 7          | 13         | 3*         | NCAA Sweet 16        |
| 1997-98       | 11         | 17         | 3          | 13         |                      |
| 1998-99       | 12         | 18         | 5          | 11         |                      |
| 1999-00       | 13         | 16         | 7          | 9          |                      |
| 2000-01       | 26         | 7          | 14         | 2          | NCAA 2nd Round       |
| 2001-02       | 19         | 12         | 12         | 4          | NIT 2nd Round        |
| 2002-03       | 23         | 7          | 12         | 4          | NCAA 1st Round       |
| 2003-04       | 30         | 2          | 16         | 0          | NCAA Elite Eight     |
| 2004-05       | 24         | 12         | 14         | 2          | NIT Runner-up        |
| 2005-06       | 19         | 14         | 9          | 7          | NIT 2nd Round        |
| 2006-07       | 18         | 14         | 9          | 7          |                      |
| 2007-08       | 21         | 13         | 9          | 7          | NCAA 1st Round       |
| 2008-09       | 17         | 15         | 9          | 7          |                      |
| 2009-10       | 11         | 20         | 5          | 11         |                      |
| 2010-11       | 11         | 22         | 4          | 12         |                      |
| 2011-12       | 20         | 14         | 9          | 7          | NIT 1st Round        |
| 2012-13       | 18         | 14         | 8          | 8          | NIT 1st Round        |
| 2013-14       | 24         | 10         | 11         | 5*         | NCAA 1st Round       |
| 2014-15       | 13         | 18         | 7          | 11         |                      |
| 2015-16       | 28         | 8          | 13         | 5*         | NCAA 2nd Round       |
| 2016-17       | 11         | 20         | 4          | 14         |                      |
| 2017-18       | 4          | 3          | 0          | 0          |                      |
| <b>Totals</b> | <b>418</b> | <b>296</b> | <b>202</b> | <b>156</b> | <b>6 NCAA, 6 NIT</b> |

\* Atlantic 10 Champion

**THE MARTELLI FILE**

**Career Record:** 418-296 (23 years)  
**Atlantic 10 Record:** 202-156  
**Postseason Record:** 18-13 (overall); 7-7 (NCAA Tournament)

**Birthdate:** August 31, 1954  
**Hometown:** Media, Pa.  
**Education:** Widener University, 1976  
**Playing Career:** Widener University, 1972-76  
**College Coaching Career:** Head Coach, Saint Joseph's University, July 20, 1995 to present; Assistant Coach, Saint Joseph's, 1985-86 to 1994-95.  
**Family:** Wife, Judy; children - Phil, Jr., Jimmy, Elizabeth; grandchildren Philip Stephen, Marra, Avery, Brynley, Madalyn and Nolan.

**Honors:** 2004 Consensus National Coach of the Year; Atlantic 10 Coach of the Year (2005, 2004, 2001, 1997); USBWA District Coach of the Year (2004, 1997); Philadelphia Big 5 Coach of the Year (2016, 2004, 1997, 1996); Honorary Doctorates - Widener University 2004, Cabrini College 2006, Immaculata University 2010.

**MARTELLI VS....**

|            |       |
|------------|-------|
| Villanova  | 4-16  |
| Temple     | 20-25 |
| Maine      | 0-0   |
| St. John's | 0-1   |

## THE HAWK

One of the most famous mascots in college sports, the Saint Joseph's Hawk is in its 62nd year in 2017-18.

The Hawk is best known for staying in constant motion by flapping its wings throughout every basketball game and representing the Saint Joseph's motto, "The Hawk Will Never Die".

The idea for the Hawk as a mascot was originated by Jim Brennan during the 1954-55 season. Brennan, an ex-Marine and SJU cheerleader, at first wanted to secure an actual hawk, but later switched to the costume idea. The student government raised the 120 dollars needed to buy the initial costume, which Brennan donned for three years. He made his debut as the Hawk on January 4, 1956, a 69-56 win over La Salle at the Palestra. The Hawk has not missed a men's basketball game since that first season.



In addition to the constant flapping, the Hawk is also recognized by its "flying" in figure eights around the court during timeouts. The constant motion, coupled with the scrappy play of the University's athletic teams, helped to spawn the school's familiar slogan "The Hawk Will Never Die!" A few years ago, ESPN used a "flap-o-meter" on the national telecast of a Saint Joseph's game to estimate that the Hawk flaps its wings 3,500 times during a regulation game.

The Hawk is unique because it is one of the few mascots in the nation that travels to every game, and the student who holds the position gains a tuition scholarship. The student, who is selected through an interview process during the previous spring semester, also serves as a team manager for the men's basketball team and travels with the squad.

**Mikaela Bakey** becomes the 37th student, and the third female, to serve as the Hawk mascot. She is a senior accounting and risk management major from Mullica Hill, N.J.

## ON THE AIR

**TV/VIDEO:** Saint Joseph's fans will be able to watch all 30 men's basketball regular-season games either on television or online via the Atlantic 10 Digital Network. The Hawks will have at least 13 games televised nationally on the ESPN Networks, NBC Sports Network and CBS Sports Network.

**RADIO:** Saint Joseph's University has entered into a partnership with Talk Radio 1210 WPHT AM to broadcast the majority of its men's basketball games during the 2017-18 season. Talk Radio 1210 WPHT will air 23 of the Hawks' 30 regular-season games this year, while at least two games will air on News Talk 990 AM WNTP, with the remainder to be announced. The Saint Joseph's Sports Network team of Matt Martucci and Lunardi will return for their ninth season together, with Lunardi marking his 28th year as the Hawks' color analyst.

**VIDEO STREAMING:** This season, live video broadcasts of many SJU games can be viewed through the Atlantic 10 Digital Network (SJUHawks.com). A subscription is necessary. (See schedule on pg. 2)

**INTERNET:** Information for Saint Joseph's basketball is found at SJU's athletics website, [www.SJUHawks.com](http://www.SJUHawks.com) with statistics, updated game notes, and live in-game statistics for all Hawk home games, and selected road games. Through Hawks All-Access, fans can follow every home game through audio streaming as well as video streaming for non-televised games. All road games are covered with audio streaming while video streaming also available for most. Video features on the team will also be available on the site.



## SAINT JOSEPH'S

The corporate title of "Saint" Joseph's University, which has been in place since Saint Joseph's was granted university status by the Commonwealth of Pennsylvania in 1979, is the public title of the institution for all aspects of its operations.

**Official reference:** Saint Joseph's University  
Saint Joseph's

**Acceptable in headlines or informal references:**

Saint Joseph's  
SJU  
St. Joe's

**UNACCEPTABLE:** St. Joseph's

## 2017 Basketball Hall of Fame

Holiday Showcase  
Mohegan Sun Arena  
Uncasville, Conn.



Wednesday, December 20  
4:30 p.m. - St. John's vs. Saint Joseph's (ESPNU)  
7:00 p.m. - Providence vs. Houston (ESPNU)

HoopHall.com  
@hoophall

For articles on the Hawks, go to  
"Hawks in the News" on SJUHawks.com  
<http://tinyurl.com/SJUClippings18>

Media Guide Online at SJUHawks.com  
<http://tinyurl.com/SJUMediaGuide18>

## CAREER HIGHS

**#10 GERALD BLOUNT**

**PTS:** 2 vs. Columbia (11/14/16)  
**REB:** 1 (3x) last at Dayton (2/7/17)  
**FGM:** --  
**FGA:** 1 at Villanova (12/3/16)  
**3FGM:** --  
**3FGA:** --  
**FTM:** 2 vs. Columbia (11/14/16)  
**FTA:** 2 (2x) last vs. Lafayette (12/22/16)  
**AST:** --  
**BLK:** --  
**STL:** 1 vs. Lafayette (12/22/16)  
**TO:** 1 (3x) last at Dayton (2/7/17)  
**MIN:** 4 (2x) last at Dayton (2/7/17)

**#2 CHARLIE BROWN**

**PTS:** 22 vs. Fordham (2/4/17)  
**REB:** 9 vs. Penn (1/21/17)  
**FGM:** 7 vs. Fordham (2/4/17)  
**FGA:** 18 at La Salle (2/18/17)  
**3FGM:** 6 vs. Fordham (2/4/17)  
**3FGA:** 11 (2x) last at Dayton (2/7/17)  
**FTM:** 7 (2x) last vs. La Salle (11/28/17)  
**FTA:** 9 at VCU (2/14/17)  
**AST:** 3 vs. Lafayette (12/22/16)  
**BLK:** 2 (5x) last vs. St. Bonaventure (2/22/17)  
**STL:** 3 (2x) last vs. NC State (11/21/16)  
**TO:** 3 (4x) last at Duquesne (3/4/17)  
**MIN:** 46 vs. Fordham (2/4/17)

**#3 MICHAEL BOOTH**

**PTS:** 3 at Illinois State (12/18/16)  
**REB:** 2 vs. Lafayette (12/22/16)  
**FGM:** 1 at Illinois State (12/18/16)  
**FGA:** 2 vs. Lafayette (12/22/16)  
**3FGM:** 1 at Illinois State (12/18/16)  
**3FGA:** 1 (4x) last vs. Lafayette (12/22/16)  
**FTM:** 2 vs. Virginia Tech (12/22/15)  
**FTA:** 2 (2x) last vs. Virginia Tech (12/22/15)  
**AST:** --  
**BLK:** --  
**STL:** --  
**TO:** 1 (2x) last at Rhode Island (1/3/17)  
**MIN:** 3 vs. Lafayette (12/22/16)

**#15 CHRIS CLOVER**

**PTS:** 21 (2x) last at VCU (2/14/17)  
**REB:** 5 (2x) last vs. Bucknell (11/29/17)  
**FGM:** 8 at VCU (2/14/17)  
**FGA:** 18 at Duquesne (3/4/17)  
**3FGM:** 4 (3x) last vs. Bucknell (11/29/17)  
**3FGA:** 7 at Duquesne (3/4/17)  
**FTM:** 8 at Duquesne (3/4/17)  
**FTA:** 8 at Duquesne (3/4/17)  
**AST:** 5 vs. La Salle (1/28/17)  
**BLK:** 1 at UIC (11/13/17)  
**STL:** 4 vs. Sacramento State (11/26/17)  
**TO:** 3 (3x) last vs. St. Bonaventure (2/22/17)  
**MIN:** 40 at Duquesne (3/4/17)

**#25 JAMES DEMERY**

**PTS:** 27 at Fordham (1/7/17)  
**REB:** 11 (2x) last at VCU (2/14/17)  
**FGM:** 10 (2x) last at UIC (11/13/17)  
**FGA:** 20 at UIC (11/13/17)  
**3FGM:** 3 at George Mason (1/13/16)  
**3FGA:** 4 (2x) last vs. Washington St (11/23/17)  
**FTM:** 9 (4x) last vs. Sacramento State (11/26/17)  
**FTA:** 15 vs. Fordham (2/4/17)  
**AST:** 5 at La Salle (2/18/17)  
**BLK:** 2 (2x) last vs. Penn (1/21/17)  
**STL:** 3 (4x) last vs. Sacramento State (11/26/17)  
**TO:** 6 (2x) last at VCU (2/14/17)  
**MIN:** 44 vs. Fordham (2/4/17)

**#22 LORENZO EDWARDS**

**PTS:** 10 vs. Sacramento State (11/26/17)  
**REB:** 9 vs. Sacramento State (11/26/17)  
**FGM:** 4 vs. Sacramento State (11/26/17)  
**FGA:** 9 vs. Sacramento State (11/26/17)  
**3FGM:** 2 vs. Sacramento State (11/26/17)  
**3FGA:** 6 vs. Sacramento State (11/26/17)  
**FTM:** 4 vs. Harvard (11/24/17)  
**FTA:** 4 vs. Harvard (11/24/17)  
**AST:** 1 at UIC (11/13/17)  
**BLK:** 2 vs. Washington St (11/23/17)  
**STL:** 1 (2x) last vs. Harvard (11/24/17)  
**TO:** 1 (3x) last vs. Harvard (11/24/17)  
**MIN:** 21 vs. Sacramento State (11/26/17)

**#33 TAYLOR FUNK**

**PTS:** 23 vs. Princeton (11/18/17)  
**REB:** 9 (2x) last vs. Harvard (11/24/17)  
**FGM:** 9 at UIC (11/13/17)  
**FGA:** 15 at UIC (11/13/17)  
**3FGM:** 5 vs. Princeton (11/18/17)  
**3FGA:** 10 vs. Harvard (11/24/17)  
**FTM:** 4 vs. Princeton (11/18/17)  
**FTA:** 4 vs. Princeton (11/18/17)  
**AST:** 3 (2x) last vs. Harvard (11/24/17)  
**BLK:** 2 at Toledo (11/11/17)  
**STL:** 2 at UIC (11/13/17)  
**TO:** 1 (5x) last vs. Bucknell (11/29/17)  
**MIN:** 30 at UIC (11/13/17)

**#0 LAMARR KIMBLE**

**PTS:** 26 vs. Loyola Chicago (11/18/16)  
**REB:** 9 at Fordham (1/7/17)  
**FGM:** 10 vs. Loyola Chicago (11/18/16)  
**FGA:** 18 (4x) last at Dayton (2/7/17)  
**3FGM:** 5 vs. Loyola Chicago (11/18/16)  
**3FGA:** 8 (4x) last at Dayton (2/7/17)  
**FTM:** 9 vs. Penn (1/21/17)  
**FTA:** 11 vs. Penn (1/21/17)  
**AST:** 10 at Dayton (2/7/17)  
**BLK:** 1 (6x) last vs. Richmond (1/14/17)  
**STL:** 3 vs. Lafayette (12/22/16)  
**TO:** 9 at Massachusetts (1/18/17)  
**MIN:** 50 vs. Fordham (2/4/17)

**#23 MARKELL LODGE**

**PTS:** 11 at Massachusetts (1/18/17)  
**REB:** 10 at Villanova (12/3/16)  
**FGM:** 5 (4x) last vs. St. Bonaventure (2/22/17)  
**FGA:** 7 at Rhode Island (1/3/17)  
**3FGM:** --  
**3FGA:** --  
**FTM:** 4 vs. Ole Miss (11/20/16)  
**FTA:** 5 (2x) last vs. Fordham (2/4/17)  
**AST:** 1 at Massachusetts (1/18/17)  
**BLK:** 4 vs. St. Bonaventure (2/22/17)  
**STL:** 1 (4x) last at Duquesne (3/4/17)  
**TO:** 1 (10x) last at Duquesne (3/4/17)  
**MIN:** 36 vs. Fordham (2/4/17)

**#12 ANTHONY LONGPRE'**

**PTS:** 10 vs. Princeton (11/18/17)  
**REB:** 6 (2x) last vs. Princeton (11/18/17)  
**FGM:** 3 vs. Washington St (11/23/17)  
**FGA:** 7 vs. Princeton (11/18/17)  
**3FGM:** 2 (3x) last vs. Harvard (11/24/17)  
**3FGA:** 4 (2x) last vs. Washington St (11/23/17)  
**FTM:** 1 (2x) last vs. Bucknell (11/29/17)  
**FTA:** 2 vs. Bucknell (11/29/17)  
**AST:** 5 at UIC (11/13/17)  
**BLK:** 2 (2x) last at UIC (11/13/17)  
**STL:** 2 vs. Bucknell (11/29/17)  
**TO:** 2 (2x) last vs. Bucknell (11/29/17)  
**MIN:** 28 vs. Bucknell (11/29/17)

**#1 SHAVAR NEWKIRK**

**PTS:** 28 vs. Toledo (11/12/16)  
**REB:** 10 vs. Bucknell (11/29/17)  
**FGM:** 10 (2x) last at Drexel (12/11/16)  
**FGA:** 21 vs. Washington St (11/23/17)  
**3FGM:** 4 (3x) last vs. Lafayette (12/22/16)  
**3FGA:** 14 vs. Washington St (11/23/17)  
**FTM:** 11 vs. Sacramento State (11/26/17)  
**FTA:** 14 vs. Sacramento State (11/26/17)  
**AST:** 9 vs. Villanova (12/1/15)  
**BLK:** 2 at Gonzaga (11/19/14)  
**STL:** 4 (2x) last at Princeton (12/14/16)  
**TO:** 7 at Illinois State (12/18/16)  
**MIN:** 39 at Drexel (12/11/16)

**#24 PIERFRANCESCO OLIVA**

**PTS:** 16 vs. Harvard (11/24/17)  
**REB:** 10 (2x) last vs. Bucknell (11/29/17)  
**FGM:** 6 vs. Harvard (11/24/17)  
**FGA:** 10 vs. Niagara (11/15/15)  
**3FGM:** 3 at George Washington (2/10/16)  
**3FGA:** 6 vs. Niagara (11/15/15)  
**FTM:** 4 (3x) last vs. Harvard (11/24/17)  
**FTA:** 8 vs. Washington St (11/23/17)  
**AST:** 6 vs. Washington St (11/23/17)  
**BLK:** 3 (2x) vs. Old Dominion (11/22/15)  
**STL:** 2 (4x) last vs. Washington St (11/23/17)  
**TO:** 3 (2x) last vs. Washington St (11/23/17)  
**MIN:** 38 at UIC (11/13/17)

**#5 NICK ROBINSON**

**PTS:** 14 vs. Richmond (1/14/17)  
**REB:** 8 (2x) last vs. Richmond (1/14/17)  
**FGM:** 5 vs. Massachusetts (2/11/17)  
**FGA:** 10 vs. Massachusetts (2/11/17)  
**3FGM:** 2 vs. Temple (11/30/16)  
**3FGA:** 4 at Drexel (12/11/16)  
**FTM:** 5 (3x) last vs. Fordham (2/4/17)  
**FTA:** 7 (2x) last vs. Richmond (1/14/17)  
**AST:** 7 vs. Massachusetts (3/8/17)  
**BLK:** 2 (2x) last vs. Fordham (2/4/17)  
**STL:** 2 (3x) last vs. Sacramento State (11/26/17)  
**TO:** 4 (2x) last at Rhode Island (1/3/17)  
**MIN:** 38 at Dayton (2/7/17)

**#21 KYLE THOMPSON**

**PTS:** 2 vs. Loyola Maryland (12/9/14)  
**REB:** 2 vs. Illinois State (12/19/15)  
**FGM:** 1 vs. Loyola Maryland (12/9/14)  
**FGA:** 1 (5x) last at Rhode Island (1/3/17)  
**3FGM:** --  
**3FGA:** 1 at Fordham (2/6/16)  
**FTM:** 1 (3x) last vs. Columbia (11/14/16)  
**FTA:** 2 (4x) last vs. Lafayette (12/22/16)  
**AST:** 1 (3x) last at Illinois State (12/18/16)  
**BLK:** --  
**STL:** --  
**TO:** 1 (2x) last at Fordham (1/7/17)  
**MIN:** 4 vs. Lafayette (12/22/16)

**#32 JAI WILLIAMS**

**PTS:** 8 (2x) last at Dayton (2/7/17)  
**REB:** 8 (2x) last at Saint Louis (2/25/17)  
**AST:** 1 (2x) last vs. Massachusetts (3/8/17)  
**FGM:** 4 at Dayton (2/7/17)  
**FGA:** 5 vs. Rhode Island (3/1/17)  
**3FGM:** --  
**3FGA:** --  
**FTM:** 4 vs. NC State (11/21/16)  
**FTA:** 4 (2x) last at Duquesne (3/4/17)  
**BLK:** 2 at Saint Louis (2/25/17)  
**STL:** 2 at VCU (2/14/17)  
**TO:** 2 (5x) last at La Salle (2/18/17)  
**MIN:** 25 vs. La Salle (1/28/17)

## SEASON HIGHS

## #10 GERALD BLOUNT

PTS: --  
 REB: --  
 FGM: --  
 FGA: --  
 3FGM: --  
 3FGA: --  
 FTM: --  
 FTA: --  
 AST: --  
 BLK: --  
 STL: --  
 TO: --  
 MIN: --

## #2 CHARLIE BROWN

PTS: --  
 REB: --  
 FGM: --  
 FGA: --  
 3FGM: --  
 3FGA: --  
 FTM: --  
 FTA: --  
 AST: --  
 BLK: --  
 STL: --  
 TO: --  
 MIN: --

## #3 MIKE BOOTH

PTS: --  
 REB: --  
 FGM: --  
 FGA: --  
 3FGM: --  
 3FGA: --  
 FTM: --  
 FTA: --  
 AST: --  
 BLK: --  
 STL: --  
 TO: --  
 MIN: 1 vs. Bucknell (11/29/17)

## #15 CHRIS CLOVER

PTS: 17 vs. Bucknell (11/29/17)  
 REB: 5 (3x) last vs. Bucknell (11/29/17)  
 FGM: 6 vs. Bucknell (11/29/17)  
 FGA: 11 vs. Bucknell (11/29/17)  
 3FGM: 4 vs. Bucknell (11/29/17)  
 3FGA: 6 (2x) last vs. Bucknell (11/29/17)  
 FTM: 2 vs. Sacramento State (11/26/17)  
 FTA: 4 vs. Sacramento State (11/26/17)  
 AST: 1 (2x) last vs. Princeton (11/18/17)  
 BLK: 1 at UIC (11/13/17)  
 STL: 4 vs. Sacramento State (11/26/17)  
 TO: 3 at UIC (11/13/17)  
 MIN: 29 vs. Bucknell (11/29/17)

## #25 JAMES DEMERY

PTS: 25 at UIC (11/13/17)  
 REB: 10 vs. Harvard (11/24/17)  
 FGM: 10 at UIC (11/13/17)  
 FGA: 20 at UIC (11/13/17)  
 3FGM: 1 (3x) last vs. Harvard (11/24/17)  
 3FGA: 5 vs. Princeton (11/18/17)  
 FTM: 9 vs. Sacramento State (11/26/17)  
 FTA: 10 vs. Sacramento State (11/26/17)  
 AST: 2 at UIC (11/13/17)  
 BLK: 1 (2x) last vs. Princeton (11/18/17)  
 STL: 3 (3x) last vs. Sacramento State (11/26/17)  
 TO: 2 (3x) last vs. Harvard (11/24/17)  
 MIN: 40 (2x) last vs. Sacramento State (11/26/17)

## #22 LORENZO EDWARDS

PTS: 10 vs. Sacramento State (11/26/17)  
 REB: 9 vs. Sacramento State (11/26/17)  
 FGM: 4 vs. Sacramento State (11/26/17)  
 FGA: 9 vs. Sacramento State (11/26/17)  
 3FGM: 2 vs. Sacramento State (11/26/17)  
 3FGA: 6 vs. Sacramento State (11/26/17)  
 FTM: 4 vs. Harvard (11/24/17)  
 FTA: 4 vs. Harvard (11/24/17)  
 AST: 1 at UIC (11/13/17)  
 BLK: 2 vs. Washington St (11/23/17)  
 STL: 1 (2x) last vs. Harvard (11/24/17)  
 TO: 1 (3x) last vs. Harvard (11/24/17)  
 MIN: 21 vs. Sacramento State (11/26/17)

## #33 TAYLOR FUNK

PTS: 23 vs. Princeton (11/18/17)  
 REB: 9 (2x) last vs. Harvard (11/24/17)  
 FGM: 9 at UIC (11/13/17)  
 FGA: 15 at UIC (11/13/17)  
 3FGM: 5 vs. Princeton (11/18/17)  
 3FGA: 10 vs. Harvard (11/24/17)  
 FTM: 4 vs. Princeton (11/18/17)  
 FTA: 4 vs. Princeton (11/18/17)  
 AST: 3 (2x) last vs. Harvard (11/24/17)  
 BLK: 2 at Toledo (11/11/17)  
 STL: 2 at UIC (11/13/17)  
 TO: 1 (5x) last vs. Bucknell (11/29/17)  
 MIN: 30 at UIC (11/13/17)

## #0 LAMARR KIMBLE

PTS: 10 at Toledo (11/11/17)  
 REB: 1 at Toledo (11/11/17)  
 FGM: 4 at Toledo (11/11/17)  
 FGA: at Toledo (11/11/17)  
 3FGM: 2 at Toledo (11/11/17)  
 3FGA: 4 at Toledo (11/11/17)  
 FTM: --  
 FTA: 4 at Toledo (11/11/17)  
 AST: 2 at Toledo (11/11/17)  
 BLK: --  
 STL: --  
 TO: --  
 MIN: 30 at Toledo (11/11/17)

## #23 MARKELL LODGE

PTS: --  
 REB: --  
 FGM: --  
 FGA: --  
 3FGM: --  
 3FGA: --  
 FTM: --  
 FTA: --  
 AST: --  
 BLK: --  
 STL: --  
 TO: --  
 MIN: --

## #12 ANTHONY LONGPRE'

PTS: 10 vs. Princeton (11/18/17)  
 REB: 6 (2x) last vs. Princeton (11/18/17)  
 FGM: 3 vs. Washington St (11/23/17)  
 FGA: 7 vs. Princeton (11/18/17)  
 3FGM: 2 (3x) last vs. Harvard (11/24/17)  
 3FGA: 4 (2x) last vs. Washington St (11/23/17)  
 FTM: 1 (2x) last vs. Bucknell (11/29/17)  
 FTA: 2 vs. Bucknell (11/29/17)  
 AST: 5 at UIC (11/13/17)  
 BLK: 2 (2x) last at UIC (11/13/17)  
 STL: 2 vs. Bucknell (11/29/17)  
 TO: 2 (2x) last vs. Bucknell (11/29/17)  
 MIN: 28 vs. Bucknell (11/29/17)

## #1 SHAVAR NEWKIRK

PTS: 24 vs. Washington St. (11/23/17)  
 REB: 10 vs. Bucknell (11/29/17)  
 FGM: 6 at Toledo (11/11/17)  
 FGA: 21 vs. Washington St. (11/23/17)  
 3FGM: 4 vs. Washington St. (11/23/17)  
 3FGA: 14 vs. Washington St. (11/23/17)  
 FTM: 11 vs. Sacramento State (11/26/17)  
 FTA: 14 vs. Sacramento State (11/26/17)  
 AST: 6 vs. Bucknell (11/29/17)  
 BLK: 1 at UIC (11/13/17)  
 STL: 3 (2x) last vs. Sacramento State (11/26/17)  
 TO: 3 vs. Harvard (11/24/17)  
 MIN: 33 (2x) last vs. Bucknell (11/29/17)

## #24 PIERFRANCESCO OLIVA

PTS: 16 vs. Harvard (11/24/17)  
 REB: 10 (2x) last vs. Bucknell (11/29/17)  
 FGM: 6 vs. Harvard (11/24/17)  
 FGA: 9 vs. Harvard (11/24/17)  
 3FGM: 1 at Toledo (11/11/17)  
 3FGA: 2 (2x) last vs. Princeton (11/18/17)  
 FTM: 4 vs. Harvard (11/24/17)  
 FTA: 8 vs. Washington St. (11/23/17)  
 AST: 6 vs. Washington St. (11/23/17)  
 BLK: 1 (2x) last vs. Bucknell (11/29/17)  
 STL: 2 (2x) last vs. Washington St. (11/23/17)  
 TO: 3 vs. Washington St. (11/23/17)  
 MIN: 38 at UIC (11/13/17)

## #5 NICK ROBINSON

PTS: 9 vs. Bucknell (11/29/17)  
 REB: 6 at UIC (11/13/17)  
 FGM: 4 vs. Bucknell (11/29/17)  
 FGA: 7 vs. Bucknell (11/29/17)  
 3FGM: 1 (2x) last vs. Bucknell (11/29/17)  
 3FGA: 2 vs. Bucknell (11/29/17)  
 FTM: 1 at Toledo (11/11/17)  
 FTA: 2 vs. Bucknell (11/29/17)  
 AST: 4 at Toledo (11/11/17)  
 BLK: 1 (2x) last vs. Bucknell (11/29/17)  
 STL: 2 vs. Sacramento State (11/26/17)  
 TO: 2 at UIC (11/13/17)  
 MIN: 31 at UIC (11/13/17)

## #21 KYLE THOMPSON

PTS: --  
 REB: --  
 FGM: --  
 FGA: --  
 3FGM: --  
 3FGA: --  
 FTM: --  
 FTA: --  
 AST: --  
 BLK: --  
 STL: --  
 TO: --  
 MIN: 1 vs. Bucknell (11/29/17)

## #32 JAI WILLIAMS

PTS: 2 vs. Harvard (11/24/17)  
 REB: 1 vs. Harvard (11/24/17)  
 FGM: --  
 FGA: 2 at UIC (11/13/17)  
 3FGM: --  
 3FGA: --  
 FTM: 2 vs. Harvard (11/24/17)  
 FTA: 2 vs. (2x) last vs. Sacramento State (11/26/17)  
 AST: --  
 BLK: 1 (2x) last vs. Bucknell (11/29/17)  
 STL: --  
 TO: --  
 MIN: 7 vs. Harvard (11/24/17)

BOXSCORES

Game 1: November 11, 2017 - Savage Arena - Toledo, Ohio  
Toledo 98 - SJU 87

| Saint Joseph's 0-1 |                 | tot-fg |     | 3-pt |     | rebounds |     |    |    |     |    |    |    |    |     |   |     |    |
|--------------------|-----------------|--------|-----|------|-----|----------|-----|----|----|-----|----|----|----|----|-----|---|-----|----|
| ##                 | Player          | fg     | fga | fg   | fga | ft       | fta | of | de | tot | pf | tp | a  | to | blk | s | min |    |
| 12                 | LONGPRE', A     | f      | 2   | 4    | 2   | 4        | 0   | 1  | 1  | 5   | 6  | 4  | 6  | 2  | 1   | 2 | 0   | 18 |
| 24                 | OLIVA, P        | f      | 3   | 8    | 1   | 2        | 0   | 1  | 2  | 4   | 6  | 4  | 7  | 1  | 1   | 1 | 0   | 32 |
| 25                 | DEMERY, James   | f      | 6   | 9    | 1   | 2        | 3   | 7  | 2  | 1   | 3  | 1  | 16 | 1  | 0   | 0 | 0   | 26 |
| 00                 | KIMBLE, Lamarr  | g      | 4   | 11   | 2   | 4        | 0   | 1  | 0  | 1   | 1  | 2  | 10 | 2  | 0   | 0 | 0   | 30 |
| 01                 | NEWKIRK, Shavar | g      | 6   | 12   | 2   | 3        | 7   | 9  | 0  | 2   | 2  | 2  | 21 | 1  | 0   | 3 | 20  |    |
| 05                 | ROBINSON, Nick  | g      | 1   | 6    | 0   | 1        | 1   | 1  | 1  | 1   | 2  | 4  | 3  | 4  | 1   | 0 | 1   | 22 |
| 15                 | CLOVER, Chris   | g      | 4   | 7    | 0   | 2        | 0   | 0  | 1  | 4   | 5  | 2  | 8  | 1  | 1   | 0 | 1   | 23 |
| 33                 | FUNK, Taylor    | g      | 6   | 13   | 4   | 8        | 0   | 0  | 3  | 3   | 6  | 4  | 16 | 1  | 2   | 1 | 9   |    |
| TEAM               |                 |        |     |      |     |          |     |    |    |     |    |    |    |    |     |   |     |    |
| Totals.....        |                 | 32     | 70  | 12   | 26  | 11       | 20  | 10 | 21 | 31  | 23 | 87 | 13 | 6  | 5   | 6 | 201 |    |

TOTAL FG% 1st Half: 14-39 35.9% 2nd Half: 18-31 58.1% Game: 45.7% DEADBALL  
3-Pt. FG% 1st Half: 5-14 35.7% 2nd Half: 7-12 58.3% Game: 46.2% REBOUNDS  
F Throw % 1st Half: 3-7 42.9% 2nd Half: 8-13 61.5% Game: 55.0% 2

Toledo 1-0

| Toledo 1-0  |                 | tot-fg |     | 3-pt |     | rebounds |     |    |    |     |    |    |    |    |     |   |     |    |
|-------------|-----------------|--------|-----|------|-----|----------|-----|----|----|-----|----|----|----|----|-----|---|-----|----|
| ##          | Player          | fg     | fga | fg   | fga | ft       | fta | of | de | tot | pf | tp | a  | to | blk | s | min |    |
| 02          | ADWAY, Taylor   | f      | 2   | 4    | 0   | 1        | 1   | 2  | 1  | 5   | 6  | 2  | 5  | 0  | 3   | 3 | 0   | 20 |
| 35          | NAVIGATO, Nate  | f      | 6   | 11   | 5   | 10       | 5   | 5  | 5  | 3   | 22 | 2  | 0  | 1  | 0   | 0 | 36  |    |
| 03          | JACKSON, M      | g      | 3   | 4    | 2   | 2        | 1   | 2  | 1  | 3   | 4  | 3  | 9  | 4  | 1   | 0 | 0   | 25 |
| 04          | FLETCHER, T     | g      | 2   | 9    | 1   | 3        | 8   | 10 | 1  | 6   | 7  | 4  | 13 | 4  | 5   | 0 | 1   | 34 |
| 13          | SANFORD, Jaelan | g      | 11  | 16   | 4   | 6        | 5   | 6  | 1  | 3   | 4  | 1  | 31 | 8  | 0   | 0 | 1   | 39 |
| 01          | ROSE JR, Dwayne | g      | 0   | 1    | 0   | 0        | 0   | 0  | 0  | 0   | 0  | 0  | 0  | 1  | 0   | 0 | 0   | 6  |
| 05          | ROBERTS, Justin | g      | 0   | 1    | 0   | 0        | 0   | 0  | 0  | 0   | 0  | 1  | 0  | 0  | 0   | 0 | 0   | 2  |
| 21          | ALDERSON, Dylan | g      | 3   | 4    | 2   | 3        | 0   | 0  | 1  | 3   | 4  | 1  | 8  | 1  | 1   | 0 | 2   | 19 |
| 30          | KNAPKE, Luke    | g      | 3   | 6    | 0   | 0        | 4   | 4  | 0  | 7   | 7  | 4  | 10 | 1  | 2   | 1 | 0   | 19 |
| Team        |                 |        |     |      |     |          |     |    |    |     |    |    |    |    |     |   |     |    |
| Totals..... |                 | 30     | 56  | 14   | 25  | 24       | 29  | 8  | 35 | 43  | 19 | 98 | 21 | 12 | 5   | 4 | 200 |    |

TOTAL FG% 1st Half: 17-34 50.0% 2nd Half: 13-22 59.1% Game: 53.6% DEADBALL  
3-Pt. FG% 1st Half: 7-12 58.3% 2nd Half: 7-13 53.8% Game: 56.0% REBOUNDS  
F Throw % 1st Half: 4-4 100% 2nd Half: 20-25 80.0% Game: 82.8% 2

Officials: Jim Schipper, Darryl Smith, Bo Boroski  
Technical fouls: Saint Joseph's-None. Toledo-None.  
Attendance: 3,609

| Score by Periods | 1st | 2nd | Total |
|------------------|-----|-----|-------|
| Saint Joseph's   | 36  | 51  | 87    |
| Toledo           | 45  | 53  | 98    |

Game 2: November 13, 2017 - UIC Pavilion - Chicago, Ill.  
SJU 86 - UIC 82 - OT

| Saint Joseph's 1-1 |                  | tot-fg |     | 3-pt |     | rebounds |     |    |    |     |    |    |    |    |     |    |     |    |
|--------------------|------------------|--------|-----|------|-----|----------|-----|----|----|-----|----|----|----|----|-----|----|-----|----|
| ##                 | Player           | fg     | fga | fg   | fga | ft       | fta | of | de | tot | pf | tp | a  | to | blk | s  | min |    |
| 12                 | LONGPRE', A      | f      | 1   | 6    | 0   | 1        | 0   | 0  | 1  | 3   | 4  | 2  | 2  | 5  | 1   | 2  | 0   | 23 |
| 24                 | OLIVA, P         | f      | 5   | 8    | 0   | 1        | 1   | 1  | 3  | 4   | 7  | 3  | 11 | 4  | 2   | 1  | 2   | 38 |
| 25                 | DEMERY, James    | f      | 10  | 20   | 1   | 3        | 4   | 7  | 2  | 3   | 5  | 2  | 25 | 2  | 1   | 3  | 40  |    |
| 1                  | NEWKIRK, Shavar  | g      | 5   | 13   | 0   | 4        | 6   | 7  | 0  | 0   | 2  | 16 | 5  | 2  | 1   | 1  | 28  |    |
| 15                 | CLOVER, Chris    | g      | 0   | 3    | 0   | 1        | 0   | 2  | 1  | 4   | 5  | 3  | 0  | 2  | 3   | 1  | 1   | 20 |
| 22                 | EDWARDS, Lorenzo | g      | 1   | 3    | 1   | 3        | 0   | 0  | 0  | 2   | 2  | 1  | 3  | 1  | 1   | 0  | 0   | 11 |
| 32                 | WILLIAMS, Jai    | g      | 0   | 2    | 0   | 0        | 0   | 0  | 0  | 0   | 0  | 0  | 0  | 0  | 0   | 0  | 0   | 4  |
| 33                 | FUNK, Taylor     | g      | 9   | 15   | 4   | 8        | 0   | 0  | 4  | 5   | 9  | 4  | 22 | 1  | 0   | 2  | 30  |    |
| 5                  | ROBINSON, Nick   | g      | 3   | 5    | 1   | 1        | 0   | 0  | 0  | 6   | 6  | 2  | 7  | 1  | 2   | 1  | 31  |    |
| TEAM               |                  |        |     |      |     |          |     |    |    |     |    |    |    |    |     |    |     |    |
| Totals.....        |                  | 34     | 75  | 7    | 22  | 11       | 17  | 14 | 31 | 45  | 19 | 86 | 22 | 15 | 7   | 10 | 225 |    |

TOTAL FG% 1st Half: 18-35 51.4% 2nd Half: 13-31 41.9% Game: 45.3% DEADBALL  
3-Pt. FG% 1st Half: 4-8 50.0% 2nd Half: 3-11 27.3% Game: 31.8% REBOUNDS  
F Throw % 1st Half: 2-2 100% 2nd Half: 3-8 37.5% Game: 64.7% 4

UIC 1-1

| UIC 1-1     |                  | tot-fg |     | 3-pt |     | rebounds |     |    |    |     |    |    |    |    |     |    |     |    |
|-------------|------------------|--------|-----|------|-----|----------|-----|----|----|-----|----|----|----|----|-----|----|-----|----|
| ##          | Player           | fg     | fga | fg   | fga | ft       | fta | of | de | tot | pf | tp | a  | to | blk | s  | min |    |
| 10          | DIXSON, Dikembe  | f      | 7   | 16   | 5   | 9        | 4   | 6  | 0  | 4   | 4  | 2  | 23 | 0  | 4   | 0  | 3   | 40 |
| 13          | BLOUNT, Jordan   | f      | 0   | 2    | 0   | 0        | 0   | 0  | 0  | 3   | 3  | 1  | 0  | 3  | 1   | 4  | 0   | 19 |
| 21          | ODJASE, Tai      | c      | 5   | 8    | 0   | 0        | 0   | 0  | 5  | 4   | 9  | 4  | 10 | 0  | 2   | 1  | 0   | 24 |
| 15          | BOAHEN, Godwin   | g      | 3   | 11   | 0   | 3        | 1   | 2  | 0  | 3   | 3  | 5  | 7  | 3  | 0   | 0  | 2   | 34 |
| 4           | FERGUSON, Tarkus | g      | 5   | 13   | 3   | 9        | 2   | 2  | 1  | 4   | 5  | 0  | 15 | 7  | 1   | 1  | 1   | 37 |
| 0           | MATTHEWS, D      | g      | 1   | 5    | 0   | 3        | 2   | 2  | 0  | 1   | 1  | 1  | 4  | 1  | 1   | 0  | 1   | 14 |
| 1           | OTTEY, Marcus    | g      | 7   | 13   | 1   | 5        | 2   | 5  | 2  | 3   | 5  | 2  | 17 | 2  | 2   | 0  | 2   | 30 |
| 2           | DIGGINS, Michael | g      | 0   | 0    | 0   | 0        | 0   | 0  | 1  | 0   | 1  | 0  | 0  | 0  | 0   | 0  | 0   | 3  |
| 3           | WILEY, Jacob     | g      | 0   | 1    | 0   | 0        | 0   | 0  | 0  | 0   | 0  | 0  | 0  | 0  | 0   | 0  | 1   | 3  |
| 32          | ROBINSON, Clint  | g      | 2   | 5    | 0   | 1        | 2   | 5  | 3  | 5   | 8  | 1  | 6  | 1  | 1   | 0  | 0   | 21 |
| TEAM        |                  |        |     |      |     |          |     |    |    |     |    |    |    |    |     |    |     |    |
| Totals..... |                  | 30     | 74  | 9    | 30  | 13       | 22  | 15 | 29 | 44  | 16 | 82 | 17 | 12 | 6   | 10 | 225 |    |

TOTAL FG% 1st Half: 16-35 45.7% 2nd Half: 12-34 35.3% Game: 40.5% DEADBALL  
3-Pt. FG% 1st Half: 5-14 35.7% 2nd Half: 3-14 21.4% Game: 30.0% REBOUNDS  
F Throw % 1st Half: 3-6 50.0% 2nd Half: 7-12 58.3% Game: 59.1% 7

Officials: Chris Beaver, Kevin Ferguson, Ray Perone  
Technical fouls: Saint Joseph's-None. UIC-None.  
Attendance: 3,175

| Score by Periods | 1st | 2nd | OT | Total |
|------------------|-----|-----|----|-------|
| Saint Joseph's   | 42  | 32  | 12 | 86    |
| UIC              | 40  | 34  | 8  | 82    |

Game 3: November 18, 2017 - Hagan Arena  
SJU 71 - Princeton 58

| Princeton 0-3 |                 | tot-fg |     | 3-pt |     | rebounds |     |    |    |     |    |    |    |    |     |   |     |    |
|---------------|-----------------|--------|-----|------|-----|----------|-----|----|----|-----|----|----|----|----|-----|---|-----|----|
| ##            | Player          | fg     | fga | fg   | fga | ft       | fta | of | de | tot | pf | tp | a  | to | blk | s | min |    |
| 04            | LeBLANC, Mike   | f      | 1   | 5    | 1   | 5        | 0   | 0  | 0  | 4   | 4  | 2  | 3  | 2  | 2   | 0 | 0   | 27 |
| 35            | BRENNAN, Alec   | f      | 1   | 3    | 0   | 1        | 0   | 0  | 1  | 0   | 1  | 1  | 2  | 0  | 0   | 0 | 0   | 17 |
| 03            | CANNADY, Devin  | g      | 8   | 13   | 6   | 10       | 0   | 0  | 2  | 2   | 3  | 22 | 0  | 2  | 0   | 0 | 36  |    |
| 05            | BELL, Amir      | g      | 4   | 9    | 1   | 5        | 6   | 7  | 0  | 6   | 6  | 3  | 15 | 4  | 1   | 0 | 1   | 38 |
| 12            | STEPHENS, Myles | g      | 6   | 9    | 1   | 2        | 0   | 0  | 2  | 6   | 8  | 1  | 13 | 2  | 3   | 0 | 0   | 36 |
| 00            | YOUNG, Aaron    | g      | 1   | 6    | 1   | 5        | 0   | 0  | 0  | 1   | 1  | 2  | 3  | 2  | 0   | 0 | 0   | 23 |
| 02            | MORALES, Jose   | g      | 0   | 0    | 0   | 0        | 0   | 0  | 0  | 0   | 0  | 0  | 0  | 0  | 0   | 0 | 0   | 1  |
| 15            | SCHWEIGER, Ryan | g      | 0   | 5    | 0   | 3        | 0   | 0  | 0  | 0   | 0  | 1  | 0  | 1  | 0   | 0 | 0   | 15 |
| 31            | BRAMLAGE, Noah  | g      | 0   | 0    | 0   | 0        | 0   | 0  | 0  | 0   | 0  | 1  | 0  | 0  | 0   | 0 | 0   | 1  |
| 33            | MUCH, Sebastian | g      | 0   | 1    | 0   | 1        | 0   | 0  | 0  | 1   | 1  | 4  | 0  | 0  | 0   | 0 | 0   | 6  |
| TEAM          |                 |        |     |      |     |          |     |    |    |     |    |    |    |    |     |   |     |    |
| Totals.....   |                 | 21     | 51  | 10   | 32  | 6        | 7   | 3  | 22 | 25  | 18 | 58 | 11 | 9  | 0   | 1 | 200 |    |

TOTAL FG% 1st Half: 10-25 40.0% 2nd Half: 11-26 42.3% Game: 41.2% DEADBALL  
3-Pt. FG% 1st Half: 7-16 43.8% 2nd Half: 3-15 20.0% Game: 31.3% REBOUNDS  
F Throw % 1st Half: 4-4 100% 2nd Half: 2-3 66.7% Game: 85.7% 4

Saint Joseph's 2-1

| Saint Joseph's 2-1 |                  | tot-fg |     | 3-pt |     | rebounds |     |    |    |     |    |    |    |    |     |   |     |    |
|--------------------|------------------|--------|-----|------|-----|----------|-----|----|----|-----|----|----|----|----|-----|---|-----|----|
| ##                 | Player           | fg     | fga | fg   | fga | ft       | fta | of | de | tot | pf | tp | a  | to | blk | s | min |    |
| 12                 | LONGPRE', A      | f      | 4   | 7    | 1   | 2        | 1   | 1  | 0  | 6   | 6  | 0  | 10 | 2  | 0   | 1 | 0   | 25 |
| 24                 | OLIVA, P         | f      | 3   | 5    | 0   | 2        | 1   | 2  | 1  | 7   | 8  | 3  | 7  | 3  | 0   | 0 | 0   | 30 |
| 25                 | DEMERY, James    | f      | 4   | 10   | 1   | 5        | 4   | 6  | 1  | 2   | 3  | 2  | 13 | 1  | 2   | 1 | 2   | 36 |
| 01                 | NEWKIRK, Shavar  | g      | 4   | 10   | 2   | 6        | 1   | 2  | 0  | 4   | 4  | 2  | 11 | 1  | 1   | 0 | 0   | 31 |
| 15                 | CLOVER, Chris    | g      | 2   | 10   | 1   | 6        | 0   | 2  | 1  | 1   | 2  | 1  | 5  | 1  | 0   | 0 | 1   | 28 |
| 05                 | ROBINSON, Nick   | g      | 1   | 3    | 0   | 0        | 0   | 0  | 1  | 3   | 4  | 4  | 2  | 2  | 0   | 0 | 0   | 23 |
| 22                 | EDWARDS, Lorenzo | g      | 0   | 0    | 0   | 0        | 0   | 0  | 1  | 0   | 1  | 0  | 0  | 0  | 0   | 0 | 0   | 3  |
| 33                 | FUNK, Taylor     | g      | 7   | 8    | 5   | 6        | 4   | 4  | 0  | 1   | 1  | 1  | 23 | 1  | 1   | 0 | 1   | 24 |

BOXSCORES

Game 5: November 24, 2017 - Titan Gym - Fullerton, Calif.

Wooden Legacy  
Harvard 75 - SJU 71

| ##          | Player            | tot-fg |     | 3-pt |     | rebounds |     |    |    | tp | a  | to | blk | s  | min |     |     |    |  |
|-------------|-------------------|--------|-----|------|-----|----------|-----|----|----|----|----|----|-----|----|-----|-----|-----|----|--|
|             |                   | fg     | fga | fg   | fga | ft       | fta | of | de |    |    |    |     |    |     | tot | pf  |    |  |
| 00          | Lewis, Chris      | f      | 9   | 12   | 0   | 0        | 3   | 4  | 3  | 6  | 9  | 4  | 21  | 1  | 1   | 0   | 0   | 29 |  |
| 35          | Baker, Robert     | f      | 4   | 9    | 3   | 7        | 3   | 5  | 0  | 11 | 11 | 3  | 14  | 2  | 3   | 1   | 1   | 34 |  |
| 05          | Haskett, Rio      | g      | 2   | 8    | 1   | 4        | 1   | 2  | 0  | 1  | 1  | 4  | 6   | 1  | 2   | 0   | 1   | 29 |  |
| 11          | Aiken, Bryce      | g      | 5   | 13   | 1   | 5        | 10  | 12 | 0  | 2  | 2  | 0  | 21  | 8  | 1   | 0   | 0   | 38 |  |
| 20          | Bassey, Justin    | g      | 1   | 4    | 1   | 3        | 0   | 0  | 1  | 3  | 4  | 5  | 3   | 5  | 1   | 0   | 1   | 24 |  |
| 22          | Juzang, Christian | g      | 0   | 0    | 0   | 0        | 0   | 0  | 0  | 0  | 0  | 0  | 0   | 0  | 1   | 0   | 0   | 2  |  |
| 30          | Djuricic, Danilo  | 1      | 4   | 0    | 3   | 1        | 2   | 0  | 0  | 0  | 4  | 3  | 0   | 0  | 0   | 0   | 0   | 11 |  |
| 33          | Farley, Reed      | 1      | 3   | 0    | 1   | 3        | 0   | 0  | 3  | 2  | 5  | 1  | 3   | 1  | 1   | 0   | 0   | 22 |  |
| 44          | Welsh, Henry      | 3      | 3   | 0    | 0   | 0        | 0   | 0  | 0  | 1  | 1  | 2  | 6   | 0  | 2   | 0   | 0   | 11 |  |
| TEAM        |                   |        |     |      |     |          |     |    |    |    |    |    |     |    |     |     |     |    |  |
| Totals..... |                   | 26     | 56  | 7    | 25  | 18       | 25  | 7  | 30 | 37 | 23 | 77 | 18  | 11 | 3   | 3   | 200 |    |  |

TOTAL FG% 1st Half: 12-27 44.4% 2nd Half: 14-29 48.3% Game: 46.4% DEADBALL  
 3-Pt. FG% 1st Half: 2-12 16.7% 2nd Half: 5-13 38.5% Game: 28.0% REBOUNDS  
 F Throw % 1st Half: 8-12 66.7% 2nd Half: 10-13 76.9% Game: 72.0% 1

Saint Joseph's 2-3

| ##          | Player           | tot-fg |     | 3-pt |     | rebounds |     |    |    | tp | a  | to | blk | s  | min |     |     |    |  |
|-------------|------------------|--------|-----|------|-----|----------|-----|----|----|----|----|----|-----|----|-----|-----|-----|----|--|
|             |                  | fg     | fga | fg   | fga | ft       | fta | of | de |    |    |    |     |    |     | tot | pf  |    |  |
| 12          | LONGPRE', A      | f      | 2   | 3    | 2   | 2        | 0   | 0  | 0  | 1  | 1  | 3  | 6   | 0  | 2   | 0   | 0   | 12 |  |
| 24          | OLIVA, P         | f      | 6   | 9    | 0   | 1        | 4   | 7  | 2  | 6  | 8  | 4  | 16  | 1  | 2   | 1   | 0   | 25 |  |
| 25          | DEMERY, James    | f      | 7   | 18   | 1   | 4        | 3   | 6  | 5  | 5  | 10 | 2  | 18  | 2  | 0   | 3   | 39  |    |  |
| 01          | NEWKIRK, Shavar  | g      | 2   | 8    | 0   | 2        | 5   | 8  | 1  | 1  | 2  | 4  | 9   | 3  | 3   | 0   | 2   | 30 |  |
| 15          | CLOVER, Chris    | g      | 1   | 7    | 0   | 3        | 0   | 2  | 0  | 0  | 1  | 1  | 2   | 1  | 0   | 0   | 0   | 15 |  |
| 05          | ROBINSON, Nick   | 0      | 1   | 0    | 1   | 0        | 0   | 0  | 0  | 1  | 1  | 3  | 0   | 3  | 0   | 0   | 0   | 26 |  |
| 22          | EDWARDS, Lorenzo | 1      | 3   | 1    | 3   | 4        | 4   | 3  | 4  | 7  | 2  | 7  | 0   | 1  | 0   | 1   | 18  |    |  |
| 23          | LODGE, Markell   | 0      | 0   | 0    | 0   | 0        | 0   | 0  | 0  | 0  | 0  | 0  | 0   | 0  | 0   | 0   | 0   | +  |  |
| 32          | WILLIAMS, Jai    | 0      | 0   | 0    | 0   | 0        | 0   | 0  | 1  | 1  | 1  | 2  | 0   | 0  | 1   | 0   | 7   |    |  |
| 33          | FUNK, Taylor     | 3      | 12  | 3    | 10  | 2        | 2   | 2  | 2  | 7  | 9  | 4  | 11  | 3  | 0   | 0   | 0   | 28 |  |
| TEAM        |                  |        |     |      |     |          |     |    |    |    |    |    |     |    |     |     |     |    |  |
| Totals..... |                  | 22     | 61  | 7    | 26  | 20       | 31  | 14 | 28 | 42 | 24 | 71 | 13  | 10 | 2   | 6   | 200 |    |  |

TOTAL FG% 1st Half: 8-30 26.7% 2nd Half: 14-31 45.2% Game: 36.1% DEADBALL  
 3-Pt. FG% 1st Half: 2-14 14.3% 2nd Half: 5-12 41.7% Game: 26.9% REBOUNDS  
 F Throw % 1st Half: 10-13 76.9% 2nd Half: 10-18 55.6% Game: 64.5% 7

Officials: Rick Batsell, Michael Irving, Ed Crenshaw  
 Technical fouls: Harvard-None. Saint Joseph's-None.  
 Attendance: 2,513

| Score by Periods | 1st | 2nd | Total |
|------------------|-----|-----|-------|
| Harvard          | 34  | 43  | 77    |
| Saint Joseph's   | 28  | 43  | 71    |

Game 6: November 26, 2017 - Titan Gym - Fullerton, Calif.

Wooden Legacy  
SJU 74 - Sacramento State 69

| ##          | Player           | tot-fg |     | 3-pt |     | rebounds |     |    |    | tp | a  | to | blk | s  | min |     |     |    |  |
|-------------|------------------|--------|-----|------|-----|----------|-----|----|----|----|----|----|-----|----|-----|-----|-----|----|--|
|             |                  | fg     | fga | fg   | fga | ft       | fta | of | de |    |    |    |     |    |     | tot | pf  |    |  |
| 12          | LONGPRE', A      | f      | 0   | 3    | 0   | 2        | 0   | 0  | 0  | 0  | 0  | 1  | 0   | 0  | 0   | 0   | 14  |    |  |
| 24          | OLIVA, P         | f      | 0   | 1    | 0   | 1        | 1   | 2  | 1  | 2  | 3  | 3  | 1   | 2  | 2   | 0   | 1   | 20 |  |
| 25          | DEMERY, James    | f      | 3   | 9    | 0   | 2        | 9   | 10 | 0  | 2  | 2  | 2  | 15  | 0  | 2   | 0   | 3   | 40 |  |
| 01          | NEWKIRK, Shavar  | g      | 5   | 12   | 1   | 5        | 11  | 14 | 1  | 3  | 4  | 1  | 22  | 4  | 5   | 0   | 3   | 30 |  |
| 15          | CLOVER, Chris    | g      | 2   | 5    | 1   | 3        | 2   | 4  | 1  | 1  | 2  | 3  | 7   | 0  | 2   | 0   | 4   | 24 |  |
| 05          | ROBINSON, Nick   | 1      | 5   | 0    | 1   | 1        | 1   | 1  | 1  | 5  | 6  | 2  | 3   | 2  | 1   | 0   | 2   | 30 |  |
| 22          | EDWARDS, Lorenzo | 4      | 9   | 2    | 6   | 0        | 0   | 5  | 4  | 9  | 4  | 10 | 0   | 0  | 0   | 0   | 21  |    |  |
| 32          | WILLIAMS, Jai    | 0      | 0   | 0    | 0   | 1        | 2   | 0  | 0  | 0  | 0  | 0  | 1   | 0  | 0   | 0   | 1   |    |  |
| 33          | FUNK, Taylor     | 6      | 10  | 3    | 6   | 0        | 0   | 2  | 4  | 6  | 2  | 15 | 1   | 1  | 0   | 0   | 20  |    |  |
| TEAM        |                  |        |     |      |     |          |     |    |    |    |    |    |     |    |     |     |     |    |  |
| Totals..... |                  | 21     | 54  | 7    | 26  | 25       | 33  | 11 | 22 | 33 | 18 | 74 | 9   | 13 | 0   | 13  | 200 |    |  |

TOTAL FG% 1st Half: 9-27 33.3% 2nd Half: 12-27 44.4% Game: 38.9% DEADBALL  
 3-Pt. FG% 1st Half: 2-12 16.7% 2nd Half: 5-14 35.7% Game: 26.9% REBOUNDS  
 F Throw % 1st Half: 12-16 75.0% 2nd Half: 13-17 76.5% Game: 75.8% 6

Sacramento State 1-6

| ##          | Player           | tot-fg |     | 3-pt |     | rebounds |     |    |    | tp | a  | to | blk | s  | min |     |     |    |  |
|-------------|------------------|--------|-----|------|-----|----------|-----|----|----|----|----|----|-----|----|-----|-----|-----|----|--|
|             |                  | fg     | fga | fg   | fga | ft       | fta | of | de |    |    |    |     |    |     | tot | pf  |    |  |
| 03          | STRINGS, Justin  | f      | 7   | 16   | 0   | 4        | 6   | 9  | 1  | 4  | 5  | 3  | 20  | 4  | 2   | 0   | 0   | 36 |  |
| 23          | FOWLER, Bryce    | f      | 3   | 5    | 0   | 2        | 0   | 0  | 3  | 1  | 4  | 1  | 6   | 1  | 2   | 1   | 1   | 26 |  |
| 30          | PATTON, Joshua   | f      | 4   | 6    | 0   | 0        | 7   | 8  | 3  | 4  | 7  | 4  | 15  | 0  | 5   | 2   | 0   | 32 |  |
| 02          | M.LE'AF, Izayah  | g      | 3   | 7    | 0   | 4        | 1   | 2  | 0  | 9  | 9  | 4  | 7   | 6  | 4   | 0   | 0   | 35 |  |
| 14          | WU, Jeff         | g      | 3   | 7    | 2   | 4        | 1   | 2  | 0  | 2  | 2  | 4  | 9   | 1  | 1   | 0   | 0   | 22 |  |
| 01          | JACOBS, Chibueze | 0      | 0   | 0    | 0   | 0        | 0   | 0  | 0  | 0  | 0  | 0  | 0   | 0  | 0   | 0   | 0   | 3  |  |
| 11          | HICKS, Kevin     | 1      | 4   | 1    | 3   | 0        | 0   | 0  | 2  | 2  | 1  | 3  | 1   | 1  | 0   | 1   | 15  |    |  |
| 12          | TOLBERT, Jordan  | 3      | 7   | 3    | 4   | 0        | 0   | 1  | 2  | 3  | 2  | 9  | 6   | 2  | 0   | 0   | 27  |    |  |
| 25          | MARTIN, Calvin   | 0      | 1   | 0    | 0   | 0        | 0   | 1  | 1  | 0  | 1  | 2  | 0   | 0  | 0   | 0   | 4   |    |  |
| TEAM        |                  |        |     |      |     |          |     |    |    |    |    |    |     |    |     |     |     |    |  |
| Totals..... |                  | 24     | 53  | 6    | 21  | 15       | 21  | 10 | 25 | 35 | 22 | 69 | 19  | 17 | 3   | 2   | 200 |    |  |

TOTAL FG% 1st Half: 14-24 58.3% 2nd Half: 10-29 34.5% Game: 45.3% DEADBALL  
 3-Pt. FG% 1st Half: 4-9 44.4% 2nd Half: 2-12 16.7% Game: 28.6% REBOUNDS  
 F Throw % 1st Half: 4-7 57.1% 2nd Half: 11-14 78.6% Game: 71.4% 2

Officials: Ken Ditty, Kerby Sitton, Ed Crenshaw  
 Technical fouls: Saint Joseph's-None. Sacramento State-TEAM.  
 Attendance:

| Score by Periods | 1st | 2nd | Total |
|------------------|-----|-----|-------|
| Saint Joseph's   | 32  | 42  | 74    |
| Sacramento State | 36  | 33  | 69    |

Game 7: November 29, 2017 - Hagan Arena

SJU 83 - Bucknell 70

| ##          | Player         | tot-fg |     | 3-pt |     | rebounds |     |    |    | tp | a  | to | blk | s | min |     |     |    |  |
|-------------|----------------|--------|-----|------|-----|----------|-----|----|----|----|----|----|-----|---|-----|-----|-----|----|--|
|             |                | fg     | fga | fg   | fga | ft       | fta | of | de |    |    |    |     |   |     | tot | pf  |    |  |
| 13          | MOORE, Bruce   | f      | 2   | 11   | 0   | 4        | 1   | 2  | 4  | 0  | 4  | 4  | 5   | 1 | 0   | 0   | 0   | 26 |  |
| 23          | THOMAS, Zach   | f      | 3   | 15   | 1   | 5        | 8   | 10 | 3  | 16 | 19 | 2  | 15  | 1 | 2   | 1   | 0   | 34 |  |
| 20          | FOULLAND, Nana | c      | 8   | 16   | 0   | 0        | 1   | 7  | 5  | 5  | 10 | 3  | 17  | 0 | 1   | 1   | 1   | 33 |  |
| 02          | BROWN, Stephen | g      | 6   | 14   | 2   | 6        | 1   | 1  | 2  | 3  | 5  | 3  | 15  | 1 | 1   | 0   | 0   | 31 |  |
| 03          | SOTOS, Jimmy   | g      | 2   | 6    | 0   | 3        | 0   | 0  | 0  | 6  | 6  | 3  | 4   | 4 | 0   | 0   | 2   | 27 |  |
| 04          | SESTINA, Nate  | 2      | 3   | 0    | 0   | 1        | 3   | 1  | 3  | 4  | 2  | 5  | 1   | 0 | 0   | 0   | 13  |    |  |
| 12          | MEEKS, John    | 3      | 5   | 0    | 1   | 0        | 0   | 0  | 0  | 0  | 3  | 6  | 1   | 1 | 0   | 0   | 11  |    |  |
| 14          | ROBERTSON, Ben | 0      | 0   | 0    | 0   | 0        | 0   | 0  | 0  | 0  | 0  | 0  | 0   | 0 | 0   | 0   | 3   |    |  |
| 15          | JONES, Nate    | 0      | 3   | 0    | 2   | 0        | 0   | 0  | 0  | 0  | 1  | 0  | 0   | 0 | 0   | 0   | 10  |    |  |
| 22          | O'REILLY, Matt | 1      | 6   | 1    | 6   | 0        | 0   | 0  | 0  | 0  | 1  | 3  | 0   | 1 | 0   | 0   | 12  |    |  |
| TEAM        |                |        |     |      |     |          |     |    |    |    |    |    |     |   |     |     |     |    |  |
| Totals..... |                | 27     | 79  | 4    | 27  | 12       | 23  | 17 | 34 | 51 | 22 | 70 | 9   | 6 | 2   | 3   | 200 |    |  |

TOTAL FG% 1st Half: 9-36 25.0% 2nd Half: 18-43 41.9% Game: 34.2% DEADBALL  
 3-Pt. FG% 1st Half: 2-16 12.5% 2nd Half: 2-11 18.2% Game: 14.8% REBOUNDS  
 F Throw % 1st Half: 7-13 53.8% 2nd Half: 5-10 50.0% Game: 52.2% 6

Saint Joseph's 4-3

| ## | Player          | tot-fg |     | 3-pt |     | rebounds |     |    |    | tp | a  | to | blk | s | min |     |    |    |
|----|-----------------|--------|-----|------|-----|----------|-----|----|----|----|----|----|-----|---|-----|-----|----|----|
|    |                 | fg     | fga | fg   | fga | ft       | fta | of | de |    |    |    |     |   |     | tot | pf |    |
| 12 | LONGPRE', A     | f      | 1   | 4    | 1   | 3        | 1   | 2  | 0  | 3  | 3  | 2  | 4   | 0 | 2   | 1   | 2  | 28 |
| 24 | OLIVA, P        | f      | 1   | 4    | 1   | 2        | 2   | 2  | 3  | 7  | 10 | 2  | 5   | 5 | 1   | 1   | 1  | 32 |
| 25 | DEMERY, James   | f      | 8   | 18   | 0   | 3        | 4   | 6  | 3  | 5  | 8  | 1  | 20  | 0 | 0   | 0   | 36 |    |
| 01 | NEWKIRK, Shavar | g      | 5   | 16   | 2   | 5        | 7   | 7  | 1  | 9  | 10 | 2  | 19  | 6 | 0   | 0   | 1  | 33 |
| 15 | CLOVER, Chris   | g      | 6   | 11   | 4   | 6        | 1   | 2  | 1  | 4  | 5  | 1  | 17  | 0 | 2   | 0   | 0  | 29 |
| 03 | BOOTH, Michael  | 0      | 0   | 0    | 0   | 0        | 0   | 0  | 0  | 0  | 0  | 0  | 0   | 0 | 0   | 0   | 1  |    |
| 05 | ROBINSON, Nick  | 4      | 7   | 1    | 2   | 0        | 2   | 0  | 5  | 5  | 4  | 9  | 2   |   |     |     |    |    |



## #25 JAMES DEMERY

Senior • Forward • 6-6 • 200

Williamston, N.C.

Northside Christian Academy

Criminal Justice

Overall Stats: 17.1 ppg, 5.1 rpg, 1.9 spg

### 2017-18

- Has scored in double figures in all seven games this season
- SJU's leading scorer three times, vs. UIC, Harvard, and Bucknell
- Posted 20 pts (8-of-18 FG) and eight rebs in win over Bucknell
- Hit for 15 points (9-of-10 FT) in win over Sacramento State
- Recorded double-double (18 pts, season-high 10 rebs) vs. Harvard
- Poured in a game-high 25 points (10-of-20 FG) in win at UIC
- Hit for 16 points (6-of-9 FG) in season opener at Toledo

### Career

- Has played in 94 career games with 56 starts
- 46 double-figure games, 5 games with 20+ pts, 5 double-doubles
- Team's returning leading scorer at 14.5 points per game
- 2016-17 All-Big 5 Second Team selection
- Sixth man for the 2015-16 Atlantic 10 Champion Hawks

### 2017-18 Game-by-Game

| OPPONENT          | MIN | FG-A  | 3PT-A | FT-A | OR | DR | TR | F | A | TO | BL | S | PT |
|-------------------|-----|-------|-------|------|----|----|----|---|---|----|----|---|----|
| Toledo*           | 26  | 6-9   | 1-2   | 3-7  | 2  | 1  | 3  | 1 | 1 | 0  | 0  | 0 | 16 |
| Illinois-Chicago* | 40  | 10-20 | 1-3   | 4-7  | 2  | 3  | 5  | 2 | 2 | 2  | 1  | 3 | 25 |
| Princeton*        | 36  | 4-10  | 1-5   | 4-6  | 1  | 2  | 3  | 2 | 1 | 2  | 1  | 2 | 13 |
| Washington State* | 27  | 6-15  | 1-4   | 0-0  | 1  | 4  | 5  | 1 | 0 | 1  | 0  | 2 | 13 |
| Harvard*          | 39  | 7-18  | 1-4   | 3-6  | 5  | 5  | 10 | 2 | 2 | 2  | 0  | 3 | 18 |
| Sacramento State* | 40  | 3-9   | 0-2   | 9-10 | 0  | 2  | 2  | 2 | 0 | 2  | 0  | 3 | 15 |
| Bucknell*         | 36  | 8-18  | 0-3   | 4-6  | 3  | 5  | 8  | 1 | 0 | 0  | 0  | 0 | 20 |
| Villanova         |     |       |       |      |    |    |    |   |   |    |    |   |    |
| Temple            |     |       |       |      |    |    |    |   |   |    |    |   |    |
| Maine             |     |       |       |      |    |    |    |   |   |    |    |   |    |
| St. John's        |     |       |       |      |    |    |    |   |   |    |    |   |    |
| George Washington |     |       |       |      |    |    |    |   |   |    |    |   |    |
| VCU               |     |       |       |      |    |    |    |   |   |    |    |   |    |
| St. Bonaventure   |     |       |       |      |    |    |    |   |   |    |    |   |    |
| George Mason      |     |       |       |      |    |    |    |   |   |    |    |   |    |
| Massachusetts     |     |       |       |      |    |    |    |   |   |    |    |   |    |
| Dayton            |     |       |       |      |    |    |    |   |   |    |    |   |    |
| Fordham           |     |       |       |      |    |    |    |   |   |    |    |   |    |
| St. Bonaventure   |     |       |       |      |    |    |    |   |   |    |    |   |    |
| Penn              |     |       |       |      |    |    |    |   |   |    |    |   |    |
| Saint Louis       |     |       |       |      |    |    |    |   |   |    |    |   |    |
| La Salle          |     |       |       |      |    |    |    |   |   |    |    |   |    |
| Davidson          |     |       |       |      |    |    |    |   |   |    |    |   |    |
| Massachusetts     |     |       |       |      |    |    |    |   |   |    |    |   |    |
| Fordham           |     |       |       |      |    |    |    |   |   |    |    |   |    |
| Duquesne          |     |       |       |      |    |    |    |   |   |    |    |   |    |
| George Mason      |     |       |       |      |    |    |    |   |   |    |    |   |    |
| Richmond          |     |       |       |      |    |    |    |   |   |    |    |   |    |
| Rhode Island      |     |       |       |      |    |    |    |   |   |    |    |   |    |
| La Salle          |     |       |       |      |    |    |    |   |   |    |    |   |    |

\* Denotes game started



## #1 SHAVAR NEWKIRK

Senior • Guard • 6-0 • 185

New York, N.Y.

Cardinal Hayes

Accounting

Overall Stats: 17.4 ppg, 3.6 rpg, 3.3 apg

### 2017-18

- Has scored in double figures in six of seven games this season
- SJU's leading scorer three times, vs. Toledo, Washington State, and Sacramento State
- Recorded first career double-double (19 pts, 10 rebs) and added season-high six assists in win over Bucknell
- Hit for game-high 22 points (career-high 11-of-14 FT) in win over Sacramento State
- Poured in season-high 24 points vs. Washington State
- Recorded 16 points and season-high five assists in win over UIC
- Had a team-high 21 points in 20 minutes in his return to the court in season opener at Toledo
- Atlantic 10 Preseason All-Conference Second Team

### Career

- Has played in 86 career games with 55 starts
- 31 double-figure games, 11 games with 20+ points
- Missed final 19 games of 2016-17 after suffering a torn ACL (left knee) vs. George Washington on December 30
- Starting point guard for the 2015-16 Atlantic 10 Champion Hawks

### 2017-18 Game-by-Game

| OPPONENT          | MIN | FG-A | 3PT-A | FT-A  | OR | DR | TR | F | A | TO | BL | S | PT |
|-------------------|-----|------|-------|-------|----|----|----|---|---|----|----|---|----|
| Toledo*           | 20  | 6-12 | 2-3   | 7-9   | 0  | 2  | 2  | 2 | 1 | 1  | 0  | 3 | 21 |
| Illinois-Chicago* | 28  | 5-13 | 0-4   | 6-7   | 0  | 0  | 0  | 2 | 5 | 2  | 1  | 1 | 16 |
| Princeton*        | 31  | 4-10 | 2-6   | 1-2   | 0  | 4  | 4  | 2 | 1 | 1  | 0  | 0 | 11 |
| Washington State* | 33  | 7-21 | 4-14  | 6-6   | 1  | 2  | 3  | 1 | 3 | 2  | 0  | 1 | 24 |
| Harvard*          | 30  | 2-8  | 0-2   | 5-8   | 1  | 1  | 2  | 4 | 3 | 3  | 0  | 2 | 9  |
| Sacramento State* | 30  | 5-12 | 1-5   | 11-14 | 1  | 3  | 4  | 1 | 4 | 5  | 0  | 3 | 22 |
| Bucknell*         | 33  | 5-16 | 2-5   | 7-7   | 1  | 9  | 10 | 2 | 6 | 0  | 0  | 1 | 19 |
| Villanova         |     |      |       |       |    |    |    |   |   |    |    |   |    |
| Temple            |     |      |       |       |    |    |    |   |   |    |    |   |    |
| Maine             |     |      |       |       |    |    |    |   |   |    |    |   |    |
| St. John's        |     |      |       |       |    |    |    |   |   |    |    |   |    |
| George Washington |     |      |       |       |    |    |    |   |   |    |    |   |    |
| VCU               |     |      |       |       |    |    |    |   |   |    |    |   |    |
| St. Bonaventure   |     |      |       |       |    |    |    |   |   |    |    |   |    |
| George Mason      |     |      |       |       |    |    |    |   |   |    |    |   |    |
| Massachusetts     |     |      |       |       |    |    |    |   |   |    |    |   |    |
| Dayton            |     |      |       |       |    |    |    |   |   |    |    |   |    |
| Fordham           |     |      |       |       |    |    |    |   |   |    |    |   |    |
| St. Bonaventure   |     |      |       |       |    |    |    |   |   |    |    |   |    |
| Penn              |     |      |       |       |    |    |    |   |   |    |    |   |    |
| Saint Louis       |     |      |       |       |    |    |    |   |   |    |    |   |    |
| La Salle          |     |      |       |       |    |    |    |   |   |    |    |   |    |
| Davidson          |     |      |       |       |    |    |    |   |   |    |    |   |    |
| Massachusetts     |     |      |       |       |    |    |    |   |   |    |    |   |    |
| Fordham           |     |      |       |       |    |    |    |   |   |    |    |   |    |
| Duquesne          |     |      |       |       |    |    |    |   |   |    |    |   |    |
| George Mason      |     |      |       |       |    |    |    |   |   |    |    |   |    |
| Richmond          |     |      |       |       |    |    |    |   |   |    |    |   |    |
| Rhode Island      |     |      |       |       |    |    |    |   |   |    |    |   |    |
| La Salle          |     |      |       |       |    |    |    |   |   |    |    |   |    |

\* Denotes game started



## #32 JAI WILLIAMS

Senior • Forward • 6-9 • 235  
 Philadelphia, Pa.  
 Phila. Electrical & Technical Charter  
 Communication Studies

Overall Stats: 0.8 ppg, 0.3 rpg, 0.5 bpg

### 2017-18

- Tallied a block in two minutes of action in win over Bucknell
- Scored one point in win over Sacramento State
- Recorded two points, one rebound, and one block in seven minutes vs. Harvard
- Saw four minutes in season debut in win over UIC

### Career

- Has played in 49 career games, including 27 in 2016-17
- Received the 2016-17 Robert O'Neill Memorial Award as the team's Most Improved Player
- Saw action in four games for the 2015-16 A-10 Champion Hawks

### 2017-18 Game-by-Game

| OPPONENT          | MIN | FG-A | 3PT-A | FT-A | OR | DR | TR | F | A | TO | BL | S | PT |
|-------------------|-----|------|-------|------|----|----|----|---|---|----|----|---|----|
| Toledo            |     |      |       |      |    |    |    |   |   |    |    |   |    |
| Illinois-Chicago  | 4   | 0-2  | 0-0   | 0-0  | 0  | 0  | 0  | 0 | 0 | 0  | 0  | 0 | 0  |
| Princeton         |     |      |       |      |    |    |    |   |   |    |    |   |    |
| Washington State  |     |      |       |      |    |    |    |   |   |    |    |   |    |
| Harvard           | 7   | 0-0  | 0-0   | 2-2  | 0  | 1  | 1  | 1 | 0 | 0  | 1  | 0 | 2  |
| Sacramento State  | 1   | 0-0  | 0-0   | 1-2  | 0  | 0  | 0  | 0 | 0 | 0  | 0  | 0 | 1  |
| Bucknell          | 2   | 0-0  | 0-0   | 0-0  | 0  | 0  | 0  | 0 | 0 | 0  | 1  | 0 | 0  |
| Villanova         |     |      |       |      |    |    |    |   |   |    |    |   |    |
| Temple            |     |      |       |      |    |    |    |   |   |    |    |   |    |
| Maine             |     |      |       |      |    |    |    |   |   |    |    |   |    |
| St. John's        |     |      |       |      |    |    |    |   |   |    |    |   |    |
| George Washington |     |      |       |      |    |    |    |   |   |    |    |   |    |
| VCU               |     |      |       |      |    |    |    |   |   |    |    |   |    |
| St. Bonaventure   |     |      |       |      |    |    |    |   |   |    |    |   |    |
| George Mason      |     |      |       |      |    |    |    |   |   |    |    |   |    |
| Massachusetts     |     |      |       |      |    |    |    |   |   |    |    |   |    |
| Dayton            |     |      |       |      |    |    |    |   |   |    |    |   |    |
| Fordham           |     |      |       |      |    |    |    |   |   |    |    |   |    |
| St. Bonaventure   |     |      |       |      |    |    |    |   |   |    |    |   |    |
| Penn              |     |      |       |      |    |    |    |   |   |    |    |   |    |
| Saint Louis       |     |      |       |      |    |    |    |   |   |    |    |   |    |
| La Salle          |     |      |       |      |    |    |    |   |   |    |    |   |    |
| Davidson          |     |      |       |      |    |    |    |   |   |    |    |   |    |
| Massachusetts     |     |      |       |      |    |    |    |   |   |    |    |   |    |
| Fordham           |     |      |       |      |    |    |    |   |   |    |    |   |    |
| Duquesne          |     |      |       |      |    |    |    |   |   |    |    |   |    |
| George Mason      |     |      |       |      |    |    |    |   |   |    |    |   |    |
| Richmond          |     |      |       |      |    |    |    |   |   |    |    |   |    |
| Rhode Island      |     |      |       |      |    |    |    |   |   |    |    |   |    |
| La Salle          |     |      |       |      |    |    |    |   |   |    |    |   |    |

\* Denotes game started



## #15 CHRIS CLOVER

Junior • Guard • 6-3 • 210  
 Philadelphia, Pa.  
 St. Joseph's Prep  
 Business Administration

Overall Stats: 6.3 ppg, 2.7 rpg, 0.7 apg

### 2017-18

- Poured in season-high 17 points (4-of-6 3FG) in win over Bucknell
- Hit for seven points and recorded career-high four steals in win over Sacramento State
- Scored five points in win over Princeton
- Matched career-high five rebounds in win over UIC
- Netted eight points and matched career-high five rebounds in season opener at Toledo

### Career

- Has played in 57 career games
- Earned 18 starts in 30 appearances in 2016-17

### 2017-18 Game-by-Game

| OPPONENT          | MIN | FG-A | 3PT-A | FT-A | OR | DR | TR | F | A | TO | BL | S | PT |
|-------------------|-----|------|-------|------|----|----|----|---|---|----|----|---|----|
| Toledo            | 23  | 4-7  | 0-2   | 0-0  | 1  | 4  | 5  | 2 | 1 | 1  | 0  | 1 | 8  |
| Illinois-Chicago* | 20  | 0-3  | 0-1   | 0-2  | 1  | 4  | 5  | 3 | 2 | 3  | 1  | 1 | 0  |
| Princeton*        | 28  | 2-10 | 1-6   | 0-2  | 1  | 1  | 2  | 1 | 1 | 0  | 0  | 1 | 5  |
| Washington State* | 22  | 2-3  | 1-2   | 0-0  | 0  | 0  | 0  | 4 | 0 | 0  | 0  | 0 | 5  |
| Harvard*          | 15  | 1-7  | 0-3   | 0-2  | 0  | 0  | 0  | 1 | 1 | 0  | 0  | 0 | 2  |
| Sacramento State* | 24  | 2-5  | 1-3   | 2-4  | 1  | 1  | 2  | 3 | 0 | 2  | 0  | 4 | 7  |
| Bucknell*         | 29  | 6-11 | 4-6   | 1-2  | 1  | 4  | 5  | 1 | 0 | 2  | 0  | 0 | 17 |
| Villanova         |     |      |       |      |    |    |    |   |   |    |    |   |    |
| Temple            |     |      |       |      |    |    |    |   |   |    |    |   |    |
| Maine             |     |      |       |      |    |    |    |   |   |    |    |   |    |
| St. John's        |     |      |       |      |    |    |    |   |   |    |    |   |    |
| George Washington |     |      |       |      |    |    |    |   |   |    |    |   |    |
| VCU               |     |      |       |      |    |    |    |   |   |    |    |   |    |
| St. Bonaventure   |     |      |       |      |    |    |    |   |   |    |    |   |    |
| George Mason      |     |      |       |      |    |    |    |   |   |    |    |   |    |
| Massachusetts     |     |      |       |      |    |    |    |   |   |    |    |   |    |
| Dayton            |     |      |       |      |    |    |    |   |   |    |    |   |    |
| Fordham           |     |      |       |      |    |    |    |   |   |    |    |   |    |
| St. Bonaventure   |     |      |       |      |    |    |    |   |   |    |    |   |    |
| Penn              |     |      |       |      |    |    |    |   |   |    |    |   |    |
| Saint Louis       |     |      |       |      |    |    |    |   |   |    |    |   |    |
| La Salle          |     |      |       |      |    |    |    |   |   |    |    |   |    |
| Davidson          |     |      |       |      |    |    |    |   |   |    |    |   |    |
| Massachusetts     |     |      |       |      |    |    |    |   |   |    |    |   |    |
| Fordham           |     |      |       |      |    |    |    |   |   |    |    |   |    |
| Duquesne          |     |      |       |      |    |    |    |   |   |    |    |   |    |
| George Mason      |     |      |       |      |    |    |    |   |   |    |    |   |    |
| Richmond          |     |      |       |      |    |    |    |   |   |    |    |   |    |
| Rhode Island      |     |      |       |      |    |    |    |   |   |    |    |   |    |
| La Salle          |     |      |       |      |    |    |    |   |   |    |    |   |    |

\* Denotes game started





## #23 MARKELL LODGE

Junior • Forward • 6-7 • 215  
 Washington, N.C.  
 Pace Academy  
 Communication Studies

Overall Stats: 0.0 ppg, 0.0 rpg, 0.0 apg

### 2017-18

- Made season debut against Harvard

### Career

- Has played in 45 career games, with 31 starts
- Was the only Hawk to make all 31 starts in 2016-17
- Saw action in 13 games for the A-10 Champion team in 2015-16

## 2017-18 Game-by-Game

| OPPONENT          | MIN | FG-A | 3PT-A | FT-A | OR | DR | TR | F | A | TO | BL | S | PT |
|-------------------|-----|------|-------|------|----|----|----|---|---|----|----|---|----|
| Toledo            |     |      |       |      |    |    |    |   |   |    |    |   |    |
| Illinois-Chicago  |     |      |       |      |    |    |    |   |   |    |    |   |    |
| Princeton         |     |      |       |      |    |    |    |   |   |    |    |   |    |
| Washington State  |     |      |       |      |    |    |    |   |   |    |    |   |    |
| Harvard           | 0+  | 0-0  | 0-0   | 0-0  | 0  | 0  | 0  | 0 | 0 | 0  | 0  | 0 | 0  |
| Sacramento State  |     |      |       |      |    |    |    |   |   |    |    |   |    |
| Bucknell          |     |      |       |      |    |    |    |   |   |    |    |   |    |
| Villanova         |     |      |       |      |    |    |    |   |   |    |    |   |    |
| Temple            |     |      |       |      |    |    |    |   |   |    |    |   |    |
| Maine             |     |      |       |      |    |    |    |   |   |    |    |   |    |
| St. John's        |     |      |       |      |    |    |    |   |   |    |    |   |    |
| George Washington |     |      |       |      |    |    |    |   |   |    |    |   |    |
| VCU               |     |      |       |      |    |    |    |   |   |    |    |   |    |
| St. Bonaventure   |     |      |       |      |    |    |    |   |   |    |    |   |    |
| George Mason      |     |      |       |      |    |    |    |   |   |    |    |   |    |
| Massachusetts     |     |      |       |      |    |    |    |   |   |    |    |   |    |
| Dayton            |     |      |       |      |    |    |    |   |   |    |    |   |    |
| Fordham           |     |      |       |      |    |    |    |   |   |    |    |   |    |
| St. Bonaventure   |     |      |       |      |    |    |    |   |   |    |    |   |    |
| Penn              |     |      |       |      |    |    |    |   |   |    |    |   |    |
| Saint Louis       |     |      |       |      |    |    |    |   |   |    |    |   |    |
| La Salle          |     |      |       |      |    |    |    |   |   |    |    |   |    |
| Davidson          |     |      |       |      |    |    |    |   |   |    |    |   |    |
| Massachusetts     |     |      |       |      |    |    |    |   |   |    |    |   |    |
| Fordham           |     |      |       |      |    |    |    |   |   |    |    |   |    |
| Duquesne          |     |      |       |      |    |    |    |   |   |    |    |   |    |
| George Mason      |     |      |       |      |    |    |    |   |   |    |    |   |    |
| Richmond          |     |      |       |      |    |    |    |   |   |    |    |   |    |
| Rhode Island      |     |      |       |      |    |    |    |   |   |    |    |   |    |
| La Salle          |     |      |       |      |    |    |    |   |   |    |    |   |    |

\* Denotes game started



## #24 PIERFRANCESCO OLIVA

R-Sophomore • Forward • 6-8 • 210  
 Taranto, Italy  
 Bergen Catholic (N.J.)  
 Business

Overall Stats: 7.4 ppg, 7.4 rpg, 3.1 apg

### 2017-18

- Matched career-high 10 rebounds in win over Bucknell
- Poured in career-high 16 points (6-of-9 FG) and added eight rebounds against Harvard
- Pulled down career-high 10 rebounds and dished out career-high six assists vs. Washington State
- Pulled down eight rebounds in win over Princeton
- Went for 11 points, seven rebounds, and four assists in win at UIC
- Had seven points and six rebounds in season opener at Toledo

### Career/Personal

- Has played in 40 career games, with 37 starts
- Missed entire 2016-17 season with knee injury after surgery (June 2016) to repair a chronic knee condition
- Freshman starter in 30 games for the 2015-16 A-10 Champion Hawks
- Goes by "Checco"

## 2017-18 Game-by-Game

| OPPONENT          | MIN | FG-A | 3PT-A | FT-A | OR | DR | TR | F | A | TO | BL | S | PT |
|-------------------|-----|------|-------|------|----|----|----|---|---|----|----|---|----|
| Toledo*           | 32  | 3-8  | 1-2   | 0-1  | 2  | 4  | 6  | 4 | 1 | 1  | 1  | 0 | 7  |
| Illinois-Chicago* | 38  | 5-8  | 0-1   | 1-1  | 3  | 4  | 7  | 3 | 4 | 2  | 1  | 2 | 11 |
| Princeton*        | 30  | 3-5  | 0-2   | 1-2  | 1  | 7  | 8  | 3 | 3 | 0  | 0  | 0 | 7  |
| Washington State* | 34  | 1-6  | 0-3   | 3-8  | 1  | 9  | 10 | 2 | 6 | 3  | 0  | 2 | 5  |
| Harvard*          | 25  | 6-9  | 0-1   | 4-7  | 2  | 6  | 8  | 4 | 1 | 2  | 1  | 0 | 16 |
| Sacramento State* | 20  | 0-1  | 0-1   | 1-2  | 1  | 2  | 3  | 3 | 2 | 2  | 0  | 1 | 1  |
| Bucknell*         | 32  | 1-4  | 1-2   | 2-2  | 3  | 7  | 10 | 2 | 5 | 1  | 1  | 1 | 5  |
| Villanova         |     |      |       |      |    |    |    |   |   |    |    |   |    |
| Temple            |     |      |       |      |    |    |    |   |   |    |    |   |    |
| Maine             |     |      |       |      |    |    |    |   |   |    |    |   |    |
| St. John's        |     |      |       |      |    |    |    |   |   |    |    |   |    |
| George Washington |     |      |       |      |    |    |    |   |   |    |    |   |    |
| VCU               |     |      |       |      |    |    |    |   |   |    |    |   |    |
| St. Bonaventure   |     |      |       |      |    |    |    |   |   |    |    |   |    |
| George Mason      |     |      |       |      |    |    |    |   |   |    |    |   |    |
| Massachusetts     |     |      |       |      |    |    |    |   |   |    |    |   |    |
| Dayton            |     |      |       |      |    |    |    |   |   |    |    |   |    |
| Fordham           |     |      |       |      |    |    |    |   |   |    |    |   |    |
| St. Bonaventure   |     |      |       |      |    |    |    |   |   |    |    |   |    |
| Penn              |     |      |       |      |    |    |    |   |   |    |    |   |    |
| Saint Louis       |     |      |       |      |    |    |    |   |   |    |    |   |    |
| La Salle          |     |      |       |      |    |    |    |   |   |    |    |   |    |
| Davidson          |     |      |       |      |    |    |    |   |   |    |    |   |    |
| Massachusetts     |     |      |       |      |    |    |    |   |   |    |    |   |    |
| Fordham           |     |      |       |      |    |    |    |   |   |    |    |   |    |
| Duquesne          |     |      |       |      |    |    |    |   |   |    |    |   |    |
| George Mason      |     |      |       |      |    |    |    |   |   |    |    |   |    |
| Richmond          |     |      |       |      |    |    |    |   |   |    |    |   |    |
| Rhode Island      |     |      |       |      |    |    |    |   |   |    |    |   |    |
| La Salle          |     |      |       |      |    |    |    |   |   |    |    |   |    |

\* Denotes game started



## #10 GERALD BLOUNT

Sophomore • Forward • 6-6 • 225  
 Atlanta, Ga.  
 Pomfret School (Conn.)  
 Finance

Overall Stats: 0.0 ppg, 0.0 rpg, 0.0 apg

### 2017-18

- Has not seen action

### Career

- Played in nine games as a freshman
- Also attended Saint Anthony and St. Benedict Prep in New Jersey

## 2017-18 Game-by-Game

| OPPONENT          | MIN | FG-A | 3PT-A | FT-A | OR | DR | TR | F | A | TO | BL | S | PT           |
|-------------------|-----|------|-------|------|----|----|----|---|---|----|----|---|--------------|
| Toledo            |     |      |       |      |    |    |    |   |   |    |    |   | Did Not Play |
| Illinois-Chicago  |     |      |       |      |    |    |    |   |   |    |    |   | Did Not Play |
| Princeton         |     |      |       |      |    |    |    |   |   |    |    |   | Did Not Play |
| Washington State  |     |      |       |      |    |    |    |   |   |    |    |   | Did Not Play |
| Harvard           |     |      |       |      |    |    |    |   |   |    |    |   | Did Not Play |
| Sacramento State  |     |      |       |      |    |    |    |   |   |    |    |   | Did Not Play |
| Bucknell          |     |      |       |      |    |    |    |   |   |    |    |   | Did Not Play |
| Villanova         |     |      |       |      |    |    |    |   |   |    |    |   | Did Not Play |
| Temple            |     |      |       |      |    |    |    |   |   |    |    |   |              |
| Maine             |     |      |       |      |    |    |    |   |   |    |    |   |              |
| St. John's        |     |      |       |      |    |    |    |   |   |    |    |   |              |
| George Washington |     |      |       |      |    |    |    |   |   |    |    |   |              |
| VCU               |     |      |       |      |    |    |    |   |   |    |    |   |              |
| St. Bonaventure   |     |      |       |      |    |    |    |   |   |    |    |   |              |
| George Mason      |     |      |       |      |    |    |    |   |   |    |    |   |              |
| Massachusetts     |     |      |       |      |    |    |    |   |   |    |    |   |              |
| Dayton            |     |      |       |      |    |    |    |   |   |    |    |   |              |
| Fordham           |     |      |       |      |    |    |    |   |   |    |    |   |              |
| St. Bonaventure   |     |      |       |      |    |    |    |   |   |    |    |   |              |
| Penn              |     |      |       |      |    |    |    |   |   |    |    |   |              |
| Saint Louis       |     |      |       |      |    |    |    |   |   |    |    |   |              |
| La Salle          |     |      |       |      |    |    |    |   |   |    |    |   |              |
| Davidson          |     |      |       |      |    |    |    |   |   |    |    |   |              |
| Massachusetts     |     |      |       |      |    |    |    |   |   |    |    |   |              |
| Fordham           |     |      |       |      |    |    |    |   |   |    |    |   |              |
| Duquesne          |     |      |       |      |    |    |    |   |   |    |    |   |              |
| George Mason      |     |      |       |      |    |    |    |   |   |    |    |   |              |
| Richmond          |     |      |       |      |    |    |    |   |   |    |    |   |              |
| Rhode Island      |     |      |       |      |    |    |    |   |   |    |    |   |              |
| La Salle          |     |      |       |      |    |    |    |   |   |    |    |   |              |

\* Denotes game started



## #2 CHARLIE BROWN, JR.

Sophomore • Forward • 6-7 • 192  
 Philadelphia, Pa.  
 St. Thomas More (Conn.)  
 Elementary Education

Overall Stats: 0.0 ppg, 0.0 rpg, 0.0 apg

### 2017-18

- Has missed all seven games of the season due to fracture in left wrist suffered in mid-October
- Atlantic 10 Preseason All-Conference Third Team

### Career

- 2016-17 Atlantic 10 All-Rookie Team honoree
- Played in all 31 games as a freshman, with 30 starts
- 25 double-figure games as a rookie in 2016-17

## 2017-18 Game-by-Game

| OPPONENT          | MIN | FG-A | 3PT-A | FT-A | OR | DR | TR | F | A | TO | BL | S | PT                     |
|-------------------|-----|------|-------|------|----|----|----|---|---|----|----|---|------------------------|
| Toledo            |     |      |       |      |    |    |    |   |   |    |    |   | Did Not Play - Injured |
| Illinois-Chicago  |     |      |       |      |    |    |    |   |   |    |    |   | Did Not Play - Injured |
| Princeton         |     |      |       |      |    |    |    |   |   |    |    |   | Did Not Play - Injured |
| Washington State  |     |      |       |      |    |    |    |   |   |    |    |   | Did Not Play - Injured |
| Harvard           |     |      |       |      |    |    |    |   |   |    |    |   | Did Not Play - Injured |
| Sacramento State  |     |      |       |      |    |    |    |   |   |    |    |   | Did Not Play - Injured |
| Bucknell          |     |      |       |      |    |    |    |   |   |    |    |   | Did Not Play - Injured |
| Villanova         |     |      |       |      |    |    |    |   |   |    |    |   |                        |
| Temple            |     |      |       |      |    |    |    |   |   |    |    |   |                        |
| Maine             |     |      |       |      |    |    |    |   |   |    |    |   |                        |
| St. John's        |     |      |       |      |    |    |    |   |   |    |    |   |                        |
| George Washington |     |      |       |      |    |    |    |   |   |    |    |   |                        |
| VCU               |     |      |       |      |    |    |    |   |   |    |    |   |                        |
| St. Bonaventure   |     |      |       |      |    |    |    |   |   |    |    |   |                        |
| George Mason      |     |      |       |      |    |    |    |   |   |    |    |   |                        |
| Massachusetts     |     |      |       |      |    |    |    |   |   |    |    |   |                        |
| Dayton            |     |      |       |      |    |    |    |   |   |    |    |   |                        |
| Fordham           |     |      |       |      |    |    |    |   |   |    |    |   |                        |
| St. Bonaventure   |     |      |       |      |    |    |    |   |   |    |    |   |                        |
| Penn              |     |      |       |      |    |    |    |   |   |    |    |   |                        |
| Saint Louis       |     |      |       |      |    |    |    |   |   |    |    |   |                        |
| La Salle          |     |      |       |      |    |    |    |   |   |    |    |   |                        |
| Davidson          |     |      |       |      |    |    |    |   |   |    |    |   |                        |
| Massachusetts     |     |      |       |      |    |    |    |   |   |    |    |   |                        |
| Fordham           |     |      |       |      |    |    |    |   |   |    |    |   |                        |
| Duquesne          |     |      |       |      |    |    |    |   |   |    |    |   |                        |
| George Mason      |     |      |       |      |    |    |    |   |   |    |    |   |                        |
| Richmond          |     |      |       |      |    |    |    |   |   |    |    |   |                        |
| Rhode Island      |     |      |       |      |    |    |    |   |   |    |    |   |                        |
| La Salle          |     |      |       |      |    |    |    |   |   |    |    |   |                        |

\* Denotes game started



## #5 NICK ROBINSON

Sophomore • Guard • 6-6 • 195  
Chicago, Ill.  
Kenwood Academy  
Business

Overall Stats: 4.3 ppg, 3.7 rpg, 2.4 apg

### 2017-18

- Scored season-high nine points (4-of-7 FG) in win over Bucknell
- Matched season-high six rebounds in win over Sacramento State
- Netted six points against Washington State
- Pulled down four rebounds in win over Princeton
- Went for seven points and six rebounds in win over UIC
- Matched career-high four assists in season opener at Toledo

### Career

- Played in all 31 games as a freshman, with 19 starts

### 2017-18 Game-by-Game

| OPPONENT          | MIN | FG-A | 3PT-A | FT-A | OR | DR | TR | F | A | TO | BL | S | PT |
|-------------------|-----|------|-------|------|----|----|----|---|---|----|----|---|----|
| Toledo            | 22  | 1-6  | 0-1   | 1-1  | 1  | 1  | 2  | 4 | 4 | 1  | 0  | 1 | 4  |
| Illinois-Chicago  | 31  | 3-5  | 1-1   | 0-0  | 0  | 6  | 6  | 2 | 1 | 2  | 1  | 1 | 7  |
| Princeton         | 23  | 1-3  | 0-0   | 0-0  | 1  | 3  | 4  | 4 | 2 | 0  | 0  | 0 | 2  |
| Washington State  | 25  | 3-6  | 0-2   | 0-0  | 0  | 2  | 2  | 2 | 3 | 0  | 0  | 1 | 6  |
| Harvard           | 26  | 0-1  | 0-1   | 0-0  | 0  | 1  | 1  | 3 | 3 | 0  | 0  | 0 | 0  |
| Sacramento State  | 30  | 1-5  | 0-1   | 1-1  | 1  | 5  | 6  | 2 | 2 | 1  | 0  | 2 | 3  |
| Bucknell          | 16  | 4-7  | 1-2   | 0-2  | 0  | 5  | 5  | 4 | 2 | 0  | 1  | 0 | 9  |
| Villanova         |     |      |       |      |    |    |    |   |   |    |    |   |    |
| Temple            |     |      |       |      |    |    |    |   |   |    |    |   |    |
| Maine             |     |      |       |      |    |    |    |   |   |    |    |   |    |
| St. John's        |     |      |       |      |    |    |    |   |   |    |    |   |    |
| George Washington |     |      |       |      |    |    |    |   |   |    |    |   |    |
| VCU               |     |      |       |      |    |    |    |   |   |    |    |   |    |
| St. Bonaventure   |     |      |       |      |    |    |    |   |   |    |    |   |    |
| George Mason      |     |      |       |      |    |    |    |   |   |    |    |   |    |
| Massachusetts     |     |      |       |      |    |    |    |   |   |    |    |   |    |
| Dayton            |     |      |       |      |    |    |    |   |   |    |    |   |    |
| Fordham           |     |      |       |      |    |    |    |   |   |    |    |   |    |
| St. Bonaventure   |     |      |       |      |    |    |    |   |   |    |    |   |    |
| Penn              |     |      |       |      |    |    |    |   |   |    |    |   |    |
| Saint Louis       |     |      |       |      |    |    |    |   |   |    |    |   |    |
| La Salle          |     |      |       |      |    |    |    |   |   |    |    |   |    |
| Davidson          |     |      |       |      |    |    |    |   |   |    |    |   |    |
| Massachusetts     |     |      |       |      |    |    |    |   |   |    |    |   |    |
| Fordham           |     |      |       |      |    |    |    |   |   |    |    |   |    |
| Duquesne          |     |      |       |      |    |    |    |   |   |    |    |   |    |
| George Mason      |     |      |       |      |    |    |    |   |   |    |    |   |    |
| Richmond          |     |      |       |      |    |    |    |   |   |    |    |   |    |
| Rhode Island      |     |      |       |      |    |    |    |   |   |    |    |   |    |
| La Salle          |     |      |       |      |    |    |    |   |   |    |    |   |    |

\* Denotes game started



## #22 LORENZO EDWARDS

R-Freshman • Forward • 6-7 • 220  
Lake Forest, Ill.  
Lake Forest  
Business

Overall Stats: 3.7 ppg, 4.5 rpg, 0.5 bpg

### 2017-18

- Had three rebs and one block in just five minutes in win over Bucknell
- Recorded career-high 10 points (4-of-9 FG) and career-high nine rebounds in career-high 21 minutes in win over Sacramento State
- Posted seven points and seven rebounds vs. Harvard
- Pulled down five rebounds in eight minutes vs. Washington State
- Saw action in win over Princeton
- On first collegiate shot, nailed three pointer in win over UIC

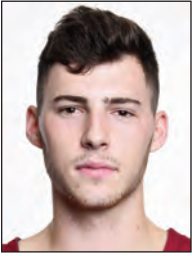
### Career

- Played in one game as a freshman, with four minutes vs. Columbia
- Missed the majority of the 2016-17 season after having shoulder surgery in December

### 2017-18 Game-by-Game

| OPPONENT          | MIN | FG-A | 3PT-A | FT-A | OR | DR | TR | F | A | TO | BL | S | PT |
|-------------------|-----|------|-------|------|----|----|----|---|---|----|----|---|----|
| Toledo            |     |      |       |      |    |    |    |   |   |    |    |   |    |
| Illinois-Chicago  | 11  | 1-3  | 1-3   | 0-0  | 0  | 2  | 2  | 1 | 1 | 1  | 0  | 0 | 3  |
| Princeton         | 3   | 0-0  | 0-0   | 0-0  | 1  | 0  | 1  | 0 | 0 | 0  | 0  | 0 | 0  |
| Washington State  | 8   | 1-3  | 0-2   | 0-0  | 1  | 4  | 5  | 0 | 0 | 0  | 2  | 0 | 2  |
| Harvard           | 18  | 1-3  | 1-3   | 4-4  | 3  | 4  | 7  | 2 | 0 | 1  | 0  | 1 | 7  |
| Sacramento State  | 21  | 4-9  | 2-6   | 0-0  | 5  | 4  | 9  | 4 | 0 | 0  | 0  | 0 | 10 |
| Bucknell          | 5   | 0-0  | 0-0   | 0-1  | 0  | 3  | 3  | 2 | 0 | 0  | 1  | 0 | 0  |
| Villanova         |     |      |       |      |    |    |    |   |   |    |    |   |    |
| Temple            |     |      |       |      |    |    |    |   |   |    |    |   |    |
| Maine             |     |      |       |      |    |    |    |   |   |    |    |   |    |
| St. John's        |     |      |       |      |    |    |    |   |   |    |    |   |    |
| George Washington |     |      |       |      |    |    |    |   |   |    |    |   |    |
| VCU               |     |      |       |      |    |    |    |   |   |    |    |   |    |
| St. Bonaventure   |     |      |       |      |    |    |    |   |   |    |    |   |    |
| George Mason      |     |      |       |      |    |    |    |   |   |    |    |   |    |
| Massachusetts     |     |      |       |      |    |    |    |   |   |    |    |   |    |
| Dayton            |     |      |       |      |    |    |    |   |   |    |    |   |    |
| Fordham           |     |      |       |      |    |    |    |   |   |    |    |   |    |
| St. Bonaventure   |     |      |       |      |    |    |    |   |   |    |    |   |    |
| Penn              |     |      |       |      |    |    |    |   |   |    |    |   |    |
| Saint Louis       |     |      |       |      |    |    |    |   |   |    |    |   |    |
| La Salle          |     |      |       |      |    |    |    |   |   |    |    |   |    |
| Davidson          |     |      |       |      |    |    |    |   |   |    |    |   |    |
| Massachusetts     |     |      |       |      |    |    |    |   |   |    |    |   |    |
| Fordham           |     |      |       |      |    |    |    |   |   |    |    |   |    |
| Duquesne          |     |      |       |      |    |    |    |   |   |    |    |   |    |
| George Mason      |     |      |       |      |    |    |    |   |   |    |    |   |    |
| Richmond          |     |      |       |      |    |    |    |   |   |    |    |   |    |
| Rhode Island      |     |      |       |      |    |    |    |   |   |    |    |   |    |
| La Salle          |     |      |       |      |    |    |    |   |   |    |    |   |    |

\* Denotes game started



## #33 TAYLOR FUNK

Freshman • Forward • 6-9 • 225

Lancaster, Pa.

Manheim Central

Business

Overall Stats: 14.9 ppg, 5.3 rpg, 1.9 apg

### 2017-18

- Has scored in double figures in five of seven games this season
- SJU's leading scorer once, vs. Princeton
- Hit for 15 points (6-of-10 FG) in win over Sacramento State
- Scored 11 points and matched season-high nine rebs vs. Harvard
- Atlantic 10 Rookie of the Week (Nov. 20) for averaging 22.5 points in wins over UIC and Princeton
- Hit for game- and season-high 23 pts (5-of-6 3FG) in win over Princeton
- Poured in 22 points (9-of-15 FG, 4-of-8 3FG), added season-high nine rebounds in win over UIC
- Hit for 16 points (6-of-13 FG, 4-of-8 3FG) in collegiate debut in season opener at Toledo

### High School/Personal

- 2017 Associated Press All-State Class 5A First Team selection
- Averaged 24.3 points as a senior to lead the Lancaster-Lebanon league in scoring for the second consecutive season
- School's all-time leading scorer with 1,977 points
- Hit 229 career three-pointers

## 2017-18 Game-by-Game

| OPPONENT          | MIN | FG-A | 3PT-A | FT-A | OR | DR | TR | F | A | TO | BL | S | PT |
|-------------------|-----|------|-------|------|----|----|----|---|---|----|----|---|----|
| Toledo            | 29  | 6-13 | 4-8   | 0-0  | 3  | 3  | 6  | 4 | 1 | 1  | 2  | 1 | 16 |
| Illinois-Chicago  | 30  | 9-15 | 4-8   | 0-0  | 4  | 5  | 9  | 4 | 2 | 1  | 0  | 2 | 22 |
| Princeton         | 24  | 7-8  | 5-6   | 4-4  | 0  | 1  | 1  | 1 | 1 | 1  | 0  | 1 | 23 |
| Washington State  | 28  | 3-6  | 2-3   | 0-0  | 1  | 4  | 5  | 2 | 3 | 1  | 1  | 0 | 8  |
| Harvard           | 28  | 3-12 | 3-10  | 2-2  | 2  | 7  | 9  | 4 | 3 | 0  | 0  | 0 | 11 |
| Sacramento State  | 20  | 6-10 | 3-6   | 0-0  | 2  | 4  | 6  | 2 | 1 | 1  | 0  | 0 | 15 |
| Bucknell          | 17  | 3-8  | 1-4   | 2-2  | 1  | 0  | 1  | 2 | 2 | 1  | 1  | 0 | 9  |
| Villanova         |     |      |       |      |    |    |    |   |   |    |    |   |    |
| Temple            |     |      |       |      |    |    |    |   |   |    |    |   |    |
| Maine             |     |      |       |      |    |    |    |   |   |    |    |   |    |
| St. John's        |     |      |       |      |    |    |    |   |   |    |    |   |    |
| George Washington |     |      |       |      |    |    |    |   |   |    |    |   |    |
| VCU               |     |      |       |      |    |    |    |   |   |    |    |   |    |
| St. Bonaventure   |     |      |       |      |    |    |    |   |   |    |    |   |    |
| George Mason      |     |      |       |      |    |    |    |   |   |    |    |   |    |
| Massachusetts     |     |      |       |      |    |    |    |   |   |    |    |   |    |
| Dayton            |     |      |       |      |    |    |    |   |   |    |    |   |    |
| Fordham           |     |      |       |      |    |    |    |   |   |    |    |   |    |
| St. Bonaventure   |     |      |       |      |    |    |    |   |   |    |    |   |    |
| Penn              |     |      |       |      |    |    |    |   |   |    |    |   |    |
| Saint Louis       |     |      |       |      |    |    |    |   |   |    |    |   |    |
| La Salle          |     |      |       |      |    |    |    |   |   |    |    |   |    |
| Davidson          |     |      |       |      |    |    |    |   |   |    |    |   |    |
| Massachusetts     |     |      |       |      |    |    |    |   |   |    |    |   |    |
| Fordham           |     |      |       |      |    |    |    |   |   |    |    |   |    |
| Duquesne          |     |      |       |      |    |    |    |   |   |    |    |   |    |
| George Mason      |     |      |       |      |    |    |    |   |   |    |    |   |    |
| Richmond          |     |      |       |      |    |    |    |   |   |    |    |   |    |
| Rhode Island      |     |      |       |      |    |    |    |   |   |    |    |   |    |
| La Salle          |     |      |       |      |    |    |    |   |   |    |    |   |    |

\* Denotes game started



## #12 ANTHONY LONGPRÉ

Freshman • Forward • 6-10 • 240

L'Assomption, Quebec

Glenelg Country (Md.)

Business

Overall Stats: 5.1 ppg, 3.3 rpg, 1.4 apg

### 2017-18

- Scored eight points (3-of-6 FG) vs. Washington State
- Netted season-high 10 points (4-of-7 FG) in win over Princeton
- Dished out season-high five assists in win at UIC
- Scored six points and pulled down six rebounds in collegiate debut in season opener at Toledo

### High School/Personal

- Played for Canada's U19 National Team that captured the gold medal at the FIBA U19 Basketball World Cup in Cairo
- Three-time Maryland Interscholastic Athletic Association All-Star
- Named the 2017 *Howard County Times* Co-Player of the Year...
- Averaged 15.9 points, 8.9 rebounds and 2.4 assists as a senior
- Moved to the United States from his native Canada in 2014

## 2017-18 Game-by-Game

| OPPONENT          | MIN | FG-A | 3PT-A | FT-A | OR | DR | TR | F | A | TO | BL | S | PT |
|-------------------|-----|------|-------|------|----|----|----|---|---|----|----|---|----|
| Toledo*           | 18  | 2-4  | 2-4   | 0-1  | 1  | 5  | 6  | 4 | 2 | 1  | 2  | 0 | 6  |
| Illinois-Chicago* | 23  | 1-6  | 0-1   | 0-0  | 1  | 3  | 4  | 2 | 5 | 1  | 2  | 0 | 2  |
| Princeton*        | 25  | 4-7  | 1-2   | 1-1  | 0  | 6  | 6  | 0 | 2 | 0  | 1  | 0 | 10 |
| Washington State* | 23  | 3-6  | 2-4   | 0-1  | 0  | 3  | 3  | 1 | 1 | 0  | 0  | 0 | 8  |
| Harvard*          | 12  | 2-3  | 2-2   | 0-0  | 0  | 1  | 1  | 3 | 0 | 2  | 0  | 0 | 6  |
| Sacramento State* | 14  | 0-3  | 0-2   | 0-0  | 0  | 0  | 0  | 1 | 0 | 0  | 0  | 0 | 0  |
| Bucknell*         | 28  | 1-4  | 1-3   | 1-2  | 0  | 3  | 3  | 2 | 0 | 2  | 1  | 2 | 4  |
| Villanova         |     |      |       |      |    |    |    |   |   |    |    |   |    |
| Temple            |     |      |       |      |    |    |    |   |   |    |    |   |    |
| Maine             |     |      |       |      |    |    |    |   |   |    |    |   |    |
| St. John's        |     |      |       |      |    |    |    |   |   |    |    |   |    |
| George Washington |     |      |       |      |    |    |    |   |   |    |    |   |    |
| VCU               |     |      |       |      |    |    |    |   |   |    |    |   |    |
| St. Bonaventure   |     |      |       |      |    |    |    |   |   |    |    |   |    |
| George Mason      |     |      |       |      |    |    |    |   |   |    |    |   |    |
| Massachusetts     |     |      |       |      |    |    |    |   |   |    |    |   |    |
| Dayton            |     |      |       |      |    |    |    |   |   |    |    |   |    |
| Fordham           |     |      |       |      |    |    |    |   |   |    |    |   |    |
| St. Bonaventure   |     |      |       |      |    |    |    |   |   |    |    |   |    |
| Penn              |     |      |       |      |    |    |    |   |   |    |    |   |    |
| Saint Louis       |     |      |       |      |    |    |    |   |   |    |    |   |    |
| La Salle          |     |      |       |      |    |    |    |   |   |    |    |   |    |
| Davidson          |     |      |       |      |    |    |    |   |   |    |    |   |    |
| Massachusetts     |     |      |       |      |    |    |    |   |   |    |    |   |    |
| Fordham           |     |      |       |      |    |    |    |   |   |    |    |   |    |
| Duquesne          |     |      |       |      |    |    |    |   |   |    |    |   |    |
| George Mason      |     |      |       |      |    |    |    |   |   |    |    |   |    |
| Richmond          |     |      |       |      |    |    |    |   |   |    |    |   |    |
| Rhode Island      |     |      |       |      |    |    |    |   |   |    |    |   |    |
| La Salle          |     |      |       |      |    |    |    |   |   |    |    |   |    |

\* Denotes game started

**#3 MICHAEL BOOTH**

Senior • Guard • 6-3 • 205  
 Thornton, Pa.  
 Bishop Shanahan  
 Pharmaceutical Marketing

Overall Stats: 0.0 ppg, 0.0 rpg, 0.0 apg

**2017-18**

- Saw action in win over Bucknell

**Career**

- Has played in 17 career games
- Selected to the 2016-17 NABC Honors Court
- Co-recipient of the 2015-16 Daniel J. Cummins, Jr. Award for spirit
- Joined the Hawks' squad as a walk-on in 2014-15

**#21 KYLE THOMPSON**

Senior • Guard • 6-2 • 200  
 Mt. Laurel, N.J.  
 St. Joseph's Prep  
 Interdisciplinary Health Services

Overall Stats: 0.0 ppg, 0.0 rpg, 0.0 apg

**2017-18**

- Saw action in win over Bucknell

**Career**

- Has played in 17 career games
- Received the 2016-17 George Senesky Memorial Award for academics
- Co-recipient of the 2015-16 Daniel J. Cummins, Jr. Award for spirit
- Joined the Hawks' squad as a walk-on in 2014-15

**#13 CHRISTIAN VEGA**

Senior • Guard • 6-0 • 188  
 Guaynabo, Puerto Rico  
 Colegio San Jose'  
 Food Marketing

Overall Stats: 0.0 ppg, 0.0 rpg, 0.0 apg

**2017-18**

- Has not seen action

**Career**

- Has played in five career games
- Joined the Hawks' squad as a walk-on in 2015-16

**#0 LAMARR KIMBLE**

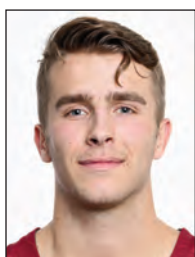
Junior • Guard • 6-0 • 185  
 Philadelphia, Pa.  
 Neumann-Goretti  
 Communication Studies

**2017-18**

- Sidelined for the remainder of the season after re-injuring fifth metatarsal (left foot) in season opener and will undergo surgery
- Team captain for the second consecutive season

**Career/Personal**

- 61 career games, 32 double-figure games, 5 games with 20+ pts
- Goes by "Fresh"

**#20 MIKE MUGGIO**

Junior • Guard • 6-3 • 210  
 River Vale, N.J.  
 Bergen Catholic  
 Sports Marketing

**2017-18**

- Sidelined indefinitely with hip injury

**Career**

- Joined the Hawks' squad as a practice player in 2016-17

**High School/Personal**

- Was a high school teammate of Pierfrancesco Oliva

**#11 TOLIVER FREEMAN**

Sophomore • Guard • 6-3 • 212  
 Baton Rouge, La.  
 Catholic  
 Biology

Overall Stats: 0.0 ppg, 0.0 rpg, 0.0 apg

**2017-18**

- Has not seen action

**Career**

- Has played in one game, against Lafayette in 2016-17
- Joined the Hawks' squad as a walk-on in 2016-17



## Individual Career History

### FUNK, Taylor

| Season  | gp-gs | min/avg  | Total  |      | 3-Point |      | F-Throws |       | Rebounds |     |     |     | Scoring |    |     |    |     |     |     |      |
|---------|-------|----------|--------|------|---------|------|----------|-------|----------|-----|-----|-----|---------|----|-----|----|-----|-----|-----|------|
|         |       |          | fg-fga | pct  | fg-fga  | pct  | ft-fta   | pct   | off      | def | tot | avg | pf      | fo | ast | to | blk | stl | pts | avg  |
| 2017-18 | 7-0   | 176/25.1 | 37-72  | .514 | 22-45   | .489 | 8-8      | 1.000 | 13       | 24  | 37  | 5.3 | 19      | 0  | 13  | 6  | 4   | 4   | 104 | 14.9 |
| TOTAL   | 7-0   | 176/25.1 | 37-72  | .514 | 22-45   | .489 | 8-8      | 1.000 | 13       | 24  | 37  | 5.3 | 19      | 0  | 13  | 6  | 4   | 4   | 104 | 14.9 |

### KIMBLE, Lamarr

| Season  | gp-gs | min/avg   | Total   |      | 3-Point |      | F-Throws |      | Rebounds |     |     |     | Scoring |    |     |     |     |     |     |      |
|---------|-------|-----------|---------|------|---------|------|----------|------|----------|-----|-----|-----|---------|----|-----|-----|-----|-----|-----|------|
|         |       |           | fg-fga  | pct  | fg-fga  | pct  | ft-fta   | pct  | off      | def | tot | avg | pf      | fo | ast | to  | blk | stl | pts | avg  |
| 2015-16 | 36-0  | 650/18.1  | 71-175  | .406 | 29-78   | .372 | 46-62    | .742 | 10       | 44  | 54  | 1.5 | 55      | 1  | 91  | 46  | 4   | 15  | 217 | 6.0  |
| 2016-17 | 24-24 | 897/37.4  | 127-351 | .362 | 40-125  | .320 | 78-112   | .696 | 15       | 82  | 97  | 4.0 | 39      | 0  | 107 | 79  | 3   | 20  | 372 | 15.5 |
| 2017-18 | 1-1   | 30/30.0   | 4-11    | .364 | 2-4     | .500 | 0-1      | .000 | 0        | 1   | 1   | 1.0 | 2       | 0  | 2   | 0   | 0   | 0   | 10  | 10.0 |
| TOTAL   | 61-25 | 1577/25.9 | 202-537 | .376 | 71-207  | .343 | 124-175  | .709 | 25       | 127 | 152 | 2.5 | 96      | 1  | 200 | 125 | 7   | 35  | 599 | 9.8  |

### LODGE, Markell

| Season  | gp-gs | min/avg  | Total  |      | 3-Point |      | F-Throws |      | Rebounds |     |     |     | Scoring |    |     |    |     |     |     |     |
|---------|-------|----------|--------|------|---------|------|----------|------|----------|-----|-----|-----|---------|----|-----|----|-----|-----|-----|-----|
|         |       |          | fg-fga | pct  | fg-fga  | pct  | ft-fta   | pct  | off      | def | tot | avg | pf      | fo | ast | to | blk | stl | pts | avg |
| 2015-16 | 13-0  | 58/4.5   | 4-5    | .800 | 0-0     | .000 | 2-4      | .500 | 6        | 6   | 12  | 0.9 | 9       | 1  | 0   | 3  | 1   | 0   | 10  | 0.8 |
| 2016-17 | 31-31 | 550/17.7 | 63-85  | .741 | 0-0     | .000 | 16-39    | .410 | 53       | 76  | 129 | 4.2 | 63      | 1  | 3   | 11 | 29  | 7   | 142 | 4.6 |
| 2017-18 | 1-0   | 0/0.0    | 0-0    | .000 | 0-0     | .000 | 0-0      | .000 | 0        | 0   | 0   | 0.0 | 0       | 0  | 0   | 0  | 0   | 0   | 0   | 0.0 |
| TOTAL   | 45-31 | 608/13.5 | 67-90  | .744 | 0-0     | .000 | 18-43    | .419 | 59       | 82  | 141 | 3.1 | 72      | 2  | 3   | 14 | 30  | 7   | 152 | 3.4 |

### LONGPRE', Anthony

| Season  | gp-gs | min/avg  | Total  |      | 3-Point |      | F-Throws |      | Rebounds |     |     |     | Scoring |    |     |    |     |     |     |     |
|---------|-------|----------|--------|------|---------|------|----------|------|----------|-----|-----|-----|---------|----|-----|----|-----|-----|-----|-----|
|         |       |          | fg-fga | pct  | fg-fga  | pct  | ft-fta   | pct  | off      | def | tot | avg | pf      | fo | ast | to | blk | stl | pts | avg |
| 2017-18 | 7-7   | 143/20.4 | 13-33  | .394 | 8-18    | .444 | 2-5      | .400 | 2        | 21  | 23  | 3.3 | 13      | 0  | 10  | 6  | 6   | 2   | 36  | 5.1 |
| TOTAL   | 7-7   | 143/20.4 | 13-33  | .394 | 8-18    | .444 | 2-5      | .400 | 2        | 21  | 23  | 3.3 | 13      | 0  | 10  | 6  | 6   | 2   | 36  | 5.1 |

### NEWKIRK, Shavar

| Season  | gp-gs | min/avg   | Total   |      | 3-Point |      | F-Throws |      | Rebounds |     |     |     | Scoring |    |     |     |     |     |     |      |
|---------|-------|-----------|---------|------|---------|------|----------|------|----------|-----|-----|-----|---------|----|-----|-----|-----|-----|-----|------|
|         |       |           | fg-fga  | pct  | fg-fga  | pct  | ft-fta   | pct  | off      | def | tot | avg | pf      | fo | ast | to  | blk | stl | pts | avg  |
| 2014-15 | 31-0  | 622/20.1  | 34-121  | .281 | 6-32    | .188 | 29-51    | .569 | 9        | 43  | 52  | 1.7 | 37      | 0  | 71  | 44  | 5   | 22  | 103 | 3.3  |
| 2015-16 | 36-36 | 848/23.6  | 90-237  | .380 | 23-76   | .303 | 86-118   | .729 | 14       | 73  | 87  | 2.4 | 34      | 1  | 95  | 54  | 5   | 29  | 289 | 8.0  |
| 2016-17 | 12-12 | 404/33.7  | 76-163  | .466 | 19-48   | .396 | 72-85    | .847 | 20       | 37  | 57  | 4.8 | 20      | 0  | 42  | 26  | 2   | 15  | 243 | 20.3 |
| 2017-18 | 7-7   | 205/29.3  | 34-92   | .370 | 11-39   | .282 | 43-53    | .811 | 4        | 21  | 25  | 3.6 | 14      | 0  | 23  | 14  | 1   | 11  | 122 | 17.4 |
| TOTAL   | 86-55 | 2079/24.2 | 234-613 | .382 | 59-195  | .303 | 230-307  | .749 | 47       | 174 | 221 | 2.6 | 105     | 1  | 231 | 138 | 13  | 77  | 757 | 8.8  |

### OLIVA, Pierfrancesco

| Season  | gp-gs | min/avg  | Total  |      | 3-Point |      | F-Throws |      | Rebounds |     |     |     | Scoring |    |     |    |     |     |     |     |
|---------|-------|----------|--------|------|---------|------|----------|------|----------|-----|-----|-----|---------|----|-----|----|-----|-----|-----|-----|
|         |       |          | fg-fga | pct  | fg-fga  | pct  | ft-fta   | pct  | off      | def | tot | avg | pf      | fo | ast | to | blk | stl | pts | avg |
| 2015-16 | 33-30 | 546/16.5 | 47-121 | .388 | 16-53   | .302 | 23-45    | .511 | 32       | 89  | 121 | 3.7 | 60      | 0  | 56  | 25 | 20  | 21  | 133 | 4.0 |
| 2017-18 | 7-7   | 211/30.1 | 19-41  | .463 | 2-12    | .167 | 12-23    | .522 | 13       | 39  | 52  | 7.4 | 21      | 0  | 22  | 11 | 4   | 6   | 52  | 7.4 |
| TOTAL   | 40-37 | 757/18.9 | 66-162 | .407 | 18-65   | .277 | 35-68    | .515 | 45       | 128 | 173 | 4.3 | 81      | 0  | 78  | 36 | 24  | 27  | 185 | 4.6 |

### ROBINSON, Nick

| Season  | gp-gs | min/avg  | Total  |      | 3-Point |      | F-Throws |      | Rebounds |     |     |     | Scoring |    |     |    |     |     |     |     |
|---------|-------|----------|--------|------|---------|------|----------|------|----------|-----|-----|-----|---------|----|-----|----|-----|-----|-----|-----|
|         |       |          | fg-fga | pct  | fg-fga  | pct  | ft-fta   | pct  | off      | def | tot | avg | pf      | fo | ast | to | blk | stl | pts | avg |
| 2016-17 | 31-19 | 724/23.4 | 52-146 | .356 | 10-44   | .227 | 46-81    | .568 | 27       | 86  | 113 | 3.6 | 74      | 1  | 60  | 49 | 15  | 14  | 160 | 5.2 |
| 2017-18 | 7-0   | 173/24.7 | 13-33  | .394 | 2-8     | .250 | 2-4      | .500 | 3        | 23  | 26  | 3.7 | 21      | 0  | 17  | 4  | 2   | 5   | 30  | 4.3 |
| TOTAL   | 38-19 | 897/23.6 | 65-179 | .363 | 12-52   | .231 | 48-85    | .565 | 30       | 109 | 139 | 3.7 | 95      | 1  | 77  | 53 | 17  | 19  | 190 | 5.0 |

## Individual Career History

### THOMPSON, Kyle

| Season       | gp-gs       | min/avg       | Total      |             | 3-Point    |             | F-Throws   |             | Rebounds |          |           |            | pf       | fo       | ast      | to       | blk      | stl      | Scoring  |            |
|--------------|-------------|---------------|------------|-------------|------------|-------------|------------|-------------|----------|----------|-----------|------------|----------|----------|----------|----------|----------|----------|----------|------------|
|              |             |               | fg-fga     | pct         | fg-fga     | pct         | ft-fta     | pct         | off      | def      | tot       | avg        |          |          |          |          |          |          | pts      | avg        |
| 2014-15      | 4-0         | 8/2.0         | 1-2        | .500        | 0-0        | .000        | 1-2        | .500        | 1        | 1        | 2         | 0.5        | 0        | 0        | 1        | 0        | 0        | 0        | 3        | 0.8        |
| 2015-16      | 7-0         | 10/1.4        | 0-1        | .000        | 0-1        | .000        | 1-2        | .500        | 0        | 5        | 5         | 0.7        | 3        | 0        | 1        | 0        | 0        | 0        | 1        | 0.1        |
| 2016-17      | 6-0         | 12/2.0        | 0-2        | .000        | 0-0        | .000        | 1-4        | .250        | 1        | 2        | 3         | 0.5        | 0        | 0        | 1        | 2        | 0        | 0        | 1        | 0.2        |
| 2017-18      | 1-0         | 1/1.0         | 0-0        | .000        | 0-0        | .000        | 0-0        | .000        | 0        | 0        | 0         | 0.0        | 0        | 0        | 0        | 0        | 0        | 0        | 0        | 0.0        |
| <b>TOTAL</b> | <b>18-0</b> | <b>31/1.7</b> | <b>1-5</b> | <b>.200</b> | <b>0-1</b> | <b>.000</b> | <b>3-8</b> | <b>.375</b> | <b>2</b> | <b>8</b> | <b>10</b> | <b>0.6</b> | <b>3</b> | <b>0</b> | <b>3</b> | <b>2</b> | <b>0</b> | <b>0</b> | <b>5</b> | <b>0.3</b> |

### VEGA, Christian

| Season       | gp-gs      | min/avg      | Total      |             | 3-Point    |             | F-Throws   |             | Rebounds |          |          |            | pf       | fo       | ast      | to       | blk      | stl      | Scoring  |            |
|--------------|------------|--------------|------------|-------------|------------|-------------|------------|-------------|----------|----------|----------|------------|----------|----------|----------|----------|----------|----------|----------|------------|
|              |            |              | fg-fga     | pct         | fg-fga     | pct         | ft-fta     | pct         | off      | def      | tot      | avg        |          |          |          |          |          |          | pts      | avg        |
| 2015-16      | 2-0        | 2/1.0        | 0-0        | .000        | 0-0        | .000        | 0-0        | .000        | 0        | 1        | 1        | 0.5        | 0        | 0        | 0        | 2        | 0        | 0        | 0        | 0.0        |
| 2016-17      | 3-0        | 4/1.3        | 0-2        | .000        | 0-1        | .000        | 0-0        | .000        | 0        | 1        | 1        | 0.3        | 1        | 0        | 0        | 0        | 0        | 0        | 0        | 0.0        |
| <b>TOTAL</b> | <b>5-0</b> | <b>6/1.2</b> | <b>0-2</b> | <b>.000</b> | <b>0-1</b> | <b>.000</b> | <b>0-0</b> | <b>.000</b> | <b>0</b> | <b>2</b> | <b>2</b> | <b>0.4</b> | <b>1</b> | <b>0</b> | <b>0</b> | <b>2</b> | <b>0</b> | <b>0</b> | <b>0</b> | <b>0.0</b> |

### WILLIAMS, Jai

| Season       | gp-gs       | min/avg        | Total        |             | 3-Point    |             | F-Throws     |             | Rebounds  |           |           |            | pf        | fo       | ast      | to        | blk      | stl      | Scoring   |            |
|--------------|-------------|----------------|--------------|-------------|------------|-------------|--------------|-------------|-----------|-----------|-----------|------------|-----------|----------|----------|-----------|----------|----------|-----------|------------|
|              |             |                | fg-fga       | pct         | fg-fga     | pct         | ft-fta       | pct         | off       | def       | tot       | avg        |           |          |          |           |          |          | pts       | avg        |
| 2014-15      | 14-0        | 98/7.0         | 8-13         | .615        | 0-0        | .000        | 2-4          | .500        | 6         | 10        | 16        | 1.1        | 22        | 1        | 1        | 5         | 4        | 4        | 18        | 1.3        |
| 2015-16      | 4-0         | 12/3.0         | 1-2          | .500        | 0-0        | .000        | 2-2          | 1.000       | 2         | 2         | 4         | 1.0        | 4         | 0        | 0        | 2         | 0        | 0        | 4         | 1.0        |
| 2016-17      | 27-0        | 289/10.7       | 26-41        | .634        | 0-0        | .000        | 21-34        | .618        | 23        | 36        | 59        | 2.2        | 39        | 0        | 1        | 17        | 3        | 5        | 73        | 2.7        |
| 2017-18      | 4-0         | 14/3.5         | 0-2          | .000        | 0-0        | .000        | 3-4          | .750        | 0         | 1         | 1         | 0.3        | 1         | 0        | 0        | 0         | 2        | 0        | 3         | 0.8        |
| <b>TOTAL</b> | <b>49-0</b> | <b>413/8.4</b> | <b>35-58</b> | <b>.603</b> | <b>0-0</b> | <b>.000</b> | <b>28-44</b> | <b>.636</b> | <b>31</b> | <b>49</b> | <b>80</b> | <b>1.6</b> | <b>66</b> | <b>1</b> | <b>2</b> | <b>24</b> | <b>9</b> | <b>9</b> | <b>98</b> | <b>2.0</b> |



**Saint Joseph's Basketball**  
**Saint Joseph's Combined Team Statistics (as of Nov 29, 2017)**  
**All games**

| <b>RECORD:</b> | <b>OVERALL</b> | <b>HOME</b> | <b>AWAY</b> | <b>NEUTRAL</b> |
|----------------|----------------|-------------|-------------|----------------|
| ALL GAMES      | 4-3            | 2-0         | 1-1         | 1-2            |
| CONFERENCE     | 0-0            | 0-0         | 0-0         | 0-0            |
| NON-CONFERENCE | 4-3            | 2-0         | 1-1         | 1-2            |

| ##             | Player               | gp-gs | min  | avg  | Total   |      | 3-Point |      | F-Throw |       | Rebounds |     |     |      | pf  | dq | a   | to | blk | stl | pts | avg  |
|----------------|----------------------|-------|------|------|---------|------|---------|------|---------|-------|----------|-----|-----|------|-----|----|-----|----|-----|-----|-----|------|
|                |                      |       |      |      | fg-fga  | fg%  | 3fg-fga | 3fg% | ft-fta  | ft%   | off      | def | tot | avg  |     |    |     |    |     |     |     |      |
| 01             | NEWKIRK, Shavar      | 7-7   | 205  | 29.3 | 34-92   | .370 | 11-39   | .282 | 43-53   | .811  | 4        | 21  | 25  | 3.6  | 14  | 0  | 23  | 14 | 1   | 11  | 122 | 17.4 |
| 25             | DEMERY, James        | 7-7   | 244  | 34.9 | 44-99   | .444 | 5-23    | .217 | 27-42   | .643  | 14       | 22  | 36  | 5.1  | 11  | 0  | 6   | 9  | 2   | 13  | 120 | 17.1 |
| 33             | FUNK, Taylor         | 7-0   | 176  | 25.1 | 37-72   | .514 | 22-45   | .489 | 8-8     | 1.000 | 13       | 24  | 37  | 5.3  | 19  | 0  | 13  | 6  | 4   | 4   | 104 | 14.9 |
| 00             | KIMBLE, Lamarr       | 1-1   | 30   | 30.0 | 4-11    | .364 | 2-4     | .500 | 0-1     | .000  | 0        | 1   | 1   | 1.0  | 2   | 0  | 2   | 0  | 0   | 0   | 10  | 10.0 |
| 24             | OLIVA, Pierfrancesco | 7-7   | 211  | 30.1 | 19-41   | .463 | 2-12    | .167 | 12-23   | .522  | 13       | 39  | 52  | 7.4  | 21  | 0  | 22  | 11 | 4   | 6   | 52  | 7.4  |
| 15             | CLOVER, Chris        | 7-6   | 161  | 23.0 | 17-46   | .370 | 7-23    | .304 | 3-12    | .250  | 5        | 14  | 19  | 2.7  | 15  | 0  | 5   | 8  | 1   | 7   | 44  | 6.3  |
| 12             | LONGPRE', Anthony    | 7-7   | 143  | 20.4 | 13-33   | .394 | 8-18    | .444 | 2-5     | .400  | 2        | 21  | 23  | 3.3  | 13  | 0  | 10  | 6  | 6   | 2   | 36  | 5.1  |
| 05             | ROBINSON, Nick       | 7-0   | 173  | 24.7 | 13-33   | .394 | 2-8     | .250 | 2-4     | .500  | 3        | 23  | 26  | 3.7  | 21  | 0  | 17  | 4  | 2   | 5   | 30  | 4.3  |
| 22             | EDWARDS, Lorenzo     | 6-0   | 66   | 11.0 | 7-18    | .389 | 4-14    | .286 | 4-5     | .800  | 10       | 17  | 27  | 4.5  | 9   | 0  | 1   | 2  | 3   | 1   | 22  | 3.7  |
| 32             | WILLIAMS, Jai        | 4-0   | 14   | 3.5  | 0-2     | .000 | 0-0     | .000 | 3-4     | .750  | 0        | 1   | 1   | 0.3  | 1   | 0  | 0   | 0  | 2   | 0   | 3   | 0.8  |
| 21             | THOMPSON, Kyle       | 1-0   | 1    | 1.0  | 0-0     | .000 | 0-0     | .000 | 0-0     | .000  | 0        | 0   | 0   | 0.0  | 0   | 0  | 0   | 0  | 0   | 0   | 0   | 0.0  |
| 23             | LODGE, Markell       | 1-0   | 0    | 0.0  | 0-0     | .000 | 0-0     | .000 | 0-0     | .000  | 0        | 0   | 0   | 0.0  | 0   | 0  | 0   | 0  | 0   | 0   | 0   | 0.0  |
| 03             | BOOTH, Michael       | 1-0   | 1    | 1.0  | 0-0     | .000 | 0-0     | .000 | 0-0     | .000  | 0        | 0   | 0   | 0.0  | 0   | 0  | 0   | 0  | 0   | 0   | 0   | 0.0  |
| Team           |                      |       |      |      |         |      |         |      |         |       | 9        | 13  | 22  |      |     |    | 1   |    |     |     |     |      |
| Total.....     |                      | 7     | 1425 |      | 188-447 | .421 | 63-186  | .339 | 104-157 | .662  | 73       | 196 | 269 | 38.4 | 126 | 0  | 99  | 61 | 25  | 49  | 543 | 77.6 |
| Opponents..... |                      | 7     | 1425 |      | 183-426 | .430 | 66-193  | .342 | 97-140  | .693  | 65       | 208 | 273 | 39.0 | 135 | -  | 111 | 80 | 24  | 26  | 529 | 75.6 |

| TEAM STATISTICS        | SJU     | OPP     | Date       | Opponent                         | Score     | Att. |
|------------------------|---------|---------|------------|----------------------------------|-----------|------|
| SCORING                | 543     | 529     | 11/11/17   | at Toledo                        | L 87-98   | 3609 |
| Points per game        | 77.6    | 75.6    | 11/13/17   | at UIC                           | Wot 86-82 | 3175 |
| Scoring margin         | +2.0    | -       | 11/18/17   | PRINCETON                        | w 71-58   | 4121 |
| FIELD GOALS-ATT        | 188-447 | 183-426 | # 11/23/17 | vs Washington State              | L 71-75   | 0    |
| Field goal pct         | .421    | .430    | # 11/24/17 | vs Harvard                       | L 71-77   | 2513 |
| 3 POINT FG-ATT         | 63-186  | 66-193  | # 11/26/17 | vs Sacramento State              | w 74-69   | 1733 |
| 3-point FG pct         | .339    | .342    | 11/29/17   | BUCKNELL                         | w 83-70   | 3783 |
| 3-pt FG made per game  | 9.0     | 9.4     |            |                                  |           |      |
| FREE THROWS-ATT        | 104-157 | 97-140  | # -        | Wooden Legacy, Fullerton, Calif. |           |      |
| Free throw pct         | .662    | .693    |            |                                  |           |      |
| F-Throws made per game | 14.9    | 13.9    |            |                                  |           |      |
| REBOUNDS               | 269     | 273     |            |                                  |           |      |
| Rebounds per game      | 38.4    | 39.0    |            |                                  |           |      |
| Rebounding margin      | -0.6    | -       |            |                                  |           |      |
| ASSISTS                | 99      | 111     |            |                                  |           |      |
| Assists per game       | 14.1    | 15.9    |            |                                  |           |      |
| TURNOVERS              | 61      | 80      |            |                                  |           |      |
| Turnovers per game     | 8.7     | 11.4    |            |                                  |           |      |
| Turnover margin        | +2.7    | -       |            |                                  |           |      |
| Assist/turnover ratio  | 1.6     | 1.4     |            |                                  |           |      |
| STEALS                 | 49      | 26      |            |                                  |           |      |
| Steals per game        | 7.0     | 3.7     |            |                                  |           |      |
| BLOCKS                 | 25      | 24      |            |                                  |           |      |
| Blocks per game        | 3.6     | 3.4     |            |                                  |           |      |
| ATTENDANCE             | 7904    | 11030   |            |                                  |           |      |
| Home games-Avg/Game    | 2-3952  | 2-3392  |            |                                  |           |      |
| Neutral site-Avg/Game  | -       | 3-1415  |            |                                  |           |      |

| Score by Periods | 1st | 2nd | OT | Totals |
|------------------|-----|-----|----|--------|
| Saint Joseph's   | 248 | 283 | 12 | 543    |
| Opponents        | 237 | 284 | 8  | 529    |

**Saint Joseph's Basketball**  
**Saint Joseph's Points-Rebounds-Assists (as of Nov 29, 2017)**  
**All games**

| Opponent            | Date     | Score |   | 00         | 01         | 03         | 05         | 12         | 15         | 21         |
|---------------------|----------|-------|---|------------|------------|------------|------------|------------|------------|------------|
|                     |          |       |   | KIMBLE,LAM | NEWKIRK,SH | BOOTH,MICH | ROBINSON,N | LONGPRE',A | CLOVER,CHR | THOMPSON,K |
| at Toledo           | 11/11/17 | 87-98 | L | 10-1-2     | 21-2-1     | DNP        | 3-2-4      | 6-6-2      | 8-5-1      | DNP        |
| at UIC              | 11/13/17 | 86-82 | w | DNP        | 16-0-5     | DNP        | 7-6-1      | 2-4-5      | 0-5-2      | DNP        |
| PRINCETON           | 11/18/17 | 71-58 | w | DNP        | 11-4-1     | DNP        | 2-4-2      | 10-6-2     | 5-2-1      | DNP        |
| vs Washington State | 11/23/17 | 71-75 | L | DNP        | 24-3-3     | DNP        | 6-2-3      | 8-3-1      | 5-0-0      | DNP        |
| vs Harvard          | 11/24/17 | 71-77 | L | DNP        | 9-2-3      | DNP        | 0-1-3      | 6-1-0      | 2-0-1      | DNP        |
| vs Sacramento State | 11/26/17 | 74-69 | w | DNP        | 22-4-4     | DNP        | 3-6-2      | 0-0-0      | 7-2-0      | DNP        |
| BUCKNELL            | 11/29/17 | 83-70 | w | DNP        | 19-10-6    | 0-0-0      | 9-5-2      | 4-3-0      | 17-5-0     | 0-0-0      |

| Opponent            | Date     | Score |   | 22         | 23         | 24         | 25         | 32         | 33         |
|---------------------|----------|-------|---|------------|------------|------------|------------|------------|------------|
|                     |          |       |   | EDWARDS,LO | LODGE,MARK | OLIVA,PIER | DEMERY,JAM | WILLIAMS,J | FUNK,TAYLO |
| at Toledo           | 11/11/17 | 87-98 | L | DNP        | DNP        | 7-6-1      | 16-3-1     | DNP        | 16-6-1     |
| at UIC              | 11/13/17 | 86-82 | w | 3-2-1      | DNP        | 11-7-4     | 25-5-2     | 0-0-0      | 22-9-2     |
| PRINCETON           | 11/18/17 | 71-58 | w | 0-1-0      | DNP        | 7-8-3      | 13-3-1     | DNP        | 23-1-1     |
| vs Washington State | 11/23/17 | 71-75 | L | 2-5-0      | DNP        | 5-10-6     | 13-5-0     | DNP        | 8-5-3      |
| vs Harvard          | 11/24/17 | 71-77 | L | 7-7-0      | 0-0-0      | 16-8-1     | 18-10-2    | 2-1-0      | 11-9-3     |
| vs Sacramento State | 11/26/17 | 74-69 | w | 10-9-0     | DNP        | 1-3-2      | 15-2-0     | 1-0-0      | 15-6-1     |
| BUCKNELL            | 11/29/17 | 83-70 | w | 0-3-0      | DNP        | 5-10-5     | 20-8-0     | 0-0-0      | 9-1-2      |

**Saint Joseph's Basketball**  
**Saint Joseph's Team Game-by-Game (as of Nov 29, 2017)**  
**All games**

TEAM STATISTICS

| Opponent            | Date     | Score |     | Total   |      | 3-Pointers |      | Free throws |      | Rebounds |     |     |      | pf  | a   | t/o | blk | stl | pts | avg  |
|---------------------|----------|-------|-----|---------|------|------------|------|-------------|------|----------|-----|-----|------|-----|-----|-----|-----|-----|-----|------|
|                     |          |       |     | fg-fga  | pct  | 3fg-fga    | pct  | ft-fta      | pct  | off      | def | tot | avg  |     |     |     |     |     |     |      |
| at Toledo           | 11/11/17 | 87-98 | L   | 32-70   | .457 | 12-26      | .462 | 11-20       | .550 | 10       | 21  | 31  | 31.0 | 23  | 13  | 6   | 5   | 6   | 87  | 87.0 |
| at UIC              | 11/13/17 | 86-82 | Wot | 34-75   | .453 | 7-22       | .318 | 11-17       | .647 | 14       | 31  | 45  | 38.0 | 19  | 22  | 15  | 7   | 10  | 86  | 86.5 |
| PRINCETON           | 11/18/17 | 71-58 | W   | 25-53   | .472 | 10-27      | .370 | 11-17       | .647 | 5        | 25  | 30  | 35.3 | 13  | 11  | 4   | 2   | 4   | 71  | 81.3 |
| vs Washington State | 11/23/17 | 71-75 | L   | 26-66   | .394 | 10-34      | .294 | 9-15        | .600 | 10       | 29  | 39  | 36.2 | 13  | 16  | 7   | 3   | 6   | 71  | 78.8 |
| vs Harvard          | 11/24/17 | 71-77 | L   | 22-61   | .361 | 7-26       | .269 | 20-31       | .645 | 14       | 28  | 42  | 37.4 | 24  | 13  | 10  | 2   | 6   | 71  | 77.2 |
| vs Sacramento State | 11/26/17 | 74-69 | W   | 21-54   | .389 | 7-26       | .269 | 25-33       | .758 | 11       | 22  | 33  | 36.7 | 18  | 9   | 13  | 0   | 13  | 74  | 76.7 |
| BUCKNELL            | 11/29/17 | 83-70 | W   | 28-68   | .412 | 10-25      | .400 | 17-24       | .708 | 9        | 40  | 49  | 38.4 | 16  | 15  | 6   | 6   | 4   | 83  | 77.6 |
| Saint Joseph's      |          | 543   |     | 188-447 | .421 | 63-186     | .339 | 104-157     | .662 | 73       | 196 | 269 | 38.4 | 126 | 99  | 61  | 25  | 49  | 543 | 77.6 |
| Opponents           |          | 529   |     | 183-426 | .430 | 66-193     | .342 | 97-140      | .693 | 65       | 208 | 273 | 39.0 | 135 | 111 | 80  | 24  | 26  | 529 | 75.6 |

Games played: 7  
Points/game: 77.6  
FG Pct: 42.1  
3FG Pct: 33.9  
FT Pct: 66.2

Rebounds/game: 38.4  
Assists/game: 14.1  
Turnovers/game: 8.7  
Assist/turnover ratio: 1.6  
Steals/game: 7.0  
Blocks/game: 3.6

# TV/RADIO ROSTER



#0 LAMARR KIMBLE  
G, 6-0, 185, Jr.  
Philadelphia, Pa.



#1 SHAVAR NEWKIRK  
G, 6-0, 185, Sr.  
New York, N.Y.



#2 CHARLIE BROWN, JR.  
F, 6-7, 192, So.  
Philadelphia, Pa.



#3 MICHAEL BOOTH  
G, 6-3, 205, Sr.  
Thornton, Pa.



#5 NICK ROBINSON  
G, 6-6, 195, So.  
Chicago, Ill.



#10 GERALD BLOUNT  
F, 6-6, 225, So.  
Atlanta, Ga.



#11 TOLIVER FREEMAN  
G, 6-3, 212, So.  
Baton Rouge, La.



#12 ANTHONY LONGPRÉ  
F, 6-10, 240, Fr.  
L'Assomption, Quebec



#13 CHRISTIAN VEGA  
G, 6-0, 188, Sr.  
Guaynabo, P.R.



#15 CHRIS CLOVER  
G, 6-3, 210, Jr.  
Philadelphia, Pa.



#20 MIKE MUGGEO  
G, 6-3, 210, Jr.  
River Vale, N.J.



#21 KYLE THOMPSON  
G, 6-2, 200, Sr.  
Mt. Laurel, N.J.



#22 LORENZO EDWARDS  
F, 6-7, 220, R-Fr.  
Lake Forest, Ill.



#23 MARKELL LODGE  
F, 6-7, 215, Jr.  
Washington, N.C.



#24 PIERFRANCESCO OLIVA  
F, 6-8, 210, R-So.  
Taranto, Italy



#25 JAMES DEMERY  
F, 6-6, 200, Sr.  
Williamston, N.C.



#32 JAI WILLIAMS  
F, 6-9, 235, Sr.  
Philadelphia, Pa.



#33 TAYLOR FUNK  
F, 6-9, 225, Fr.  
Lancaster, Pa.



PHIL MARTELLI  
Head Coach  
23rd Season